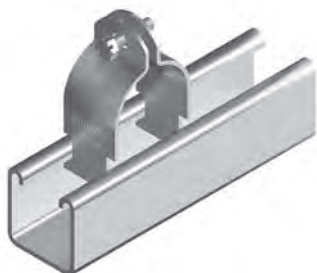


- Available Finish**
- Hot Dip Galvanised
 - Stainless Steel

Note - Stainless steel products are manufactured against firm orders only and are non returnable.

For Product Code/Generic Reference chart refer next page.



Supplied complete with screw

B5 Cable and Pipe Clamps



Sold in 20 metre rolls

B2600 Isolation Strip

Pipe Clamps					
Product Code	Generic Reference	Pull out (KGS)	Slip Along (KGS)	Slip Thru (KGS)	Weight (KGS)
B58	2024	181	32	23	0.04
B511	2025	181	32	23	0.04
B514	2026	272	45	32	0.04
B517	2027	272	45	32	0.04
B519	2028	272	45	32	0.05
B521	2029	272	68	36	0.05
B525	2030	272	68	36	0.05
B527	-	272	68	68	0.05
B529	2031	272	68	68	0.07
B532	2032	363	109	91	0.07
B534	2033	363	109	91	0.08
B538	2034	363	109	91	0.08
B543	2035	363	109	91	0.09
B548	2037	363	109	91	0.12

Continued over page.

Pipe Clamps					
Product Code	Generic Reference	Pull out (KGS)	Slip Along (KGS)	Slip Thru (KGS)	Weight (KGS)
B551	2038	363	109	91	0.12
B554	2039	363	109	91	0.13
B557	2040	363	109	91	0.13
B560	2041	363	109	91	0.14
B564	2042	363	109	91	0.14
B567	2043	363	109	91	0.15
B570	2044	363	109	91	0.15
B573	2045	363	109	91	0.16
B576	2046	363	109	91	0.16
B579	2047	454	145	91	0.17
B583	2048	454	145	91	0.17
B586	2049	454	145	91	0.18
B589	2050	454	145	91	0.18
B592	2051	454	145	91	0.19
B595	2052	454	145	91	0.19
B598	2053	454	145	91	0.20
B5102	2054	454	145	91	0.21
B5105	2055	454	145	91	0.21
B5108	2056	454	145	91	0.21
B5111	2057	454	145	91	0.22
B5114	2058	454	145	91	0.22
B5117	2059	454	145	91	0.23
B5121	2060	454	145	91	0.23
B5127	2062	454	145	91	0.24
B5133	2064	454	145	91	0.25
B5140	2066	454	145	91	0.27
B5146	2068	454	145	91	0.28
B5152	2070	454	145	91	0.28
B5160		454	145	91	0.30
B5165		454	145	91	0.31
B5171		454	145	91	0.32
B5178		454	145	91	0.33
B5191		454	145	91	0.35
B5203		454	145	91	0.37

H Hot Dip Galvansied
S Stainless Steel

Average minimum safety factor of 5.

- CHANNELS 1
- NUTS & BOLTS 2
- CANTILEVER BRACKETS 3
- CHANNEL FITTINGS 4
- LADDERTRAYS 5
- CABLE MESH 6
- STEEL LADDERS 7
- ALUMINIUM LADDERS 8
- FIRE RATED 9
- COVERS 10
- HYGROUND 11