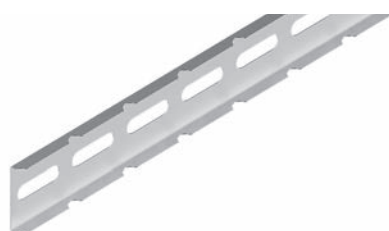


2 TX Brackets required to make a tee, and 4 required to make a cross.
 Order fasteners separately for installation (per TX Bracket)
 4 x LTBOLT, 4 x LTNUT

LT3TXH

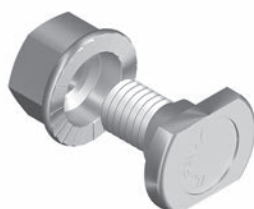


Nominal length 2.0 metres.
 Order fasteners separately for installation.

Approximate length required to make a 150 radius bend.

Tray Size	Length Required metres	Fasteners Required
LT3150	0.7	6
LT3300	0.9	6
LT3450	1.2	8
LT3600	1.4	8

LT3RP



Available Finish

Zinc Plated
 Hot Dip Galvanised

Code

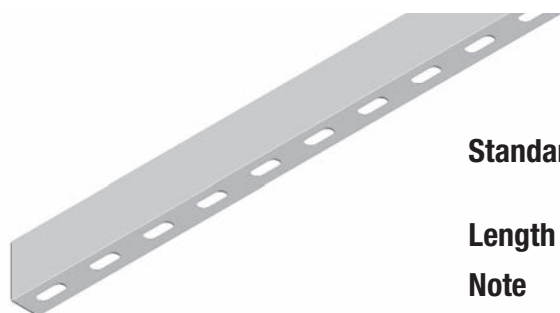
LTNUT / LTBOLT
 LTNUTH / LTBOLTH

Both items are ordered separately.

Splice Bolts have a smooth head to eliminate the risk of sheathing the cable during installation.

Special counterbore nuts ensure that correct tension is achieved during installation.

LTNUT and LTBOLT



Standard Finish Pre-Galvanised. Can also be supplied in Hot Dip Galvanised finish against firm orders.

Length 3.0 metres.

Note Order B3016 and PS620 separately for installation.

DSL3 (Divider Strip to suit LT3 Laddertray)