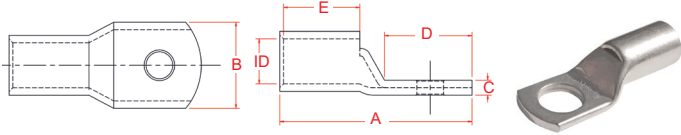


COPPER CRIMP LUGS 1.5 - 95MM²

CABAC's Lugs are made from 99.9%+ cu high conductivity annealed copper which gives the best electrical properties possible. They are capable of withstanding a continuous operating temperature of 155°C, which is well above the temperature properties of most lugs.

The lugs comply with AS4325.1 and test reports are available on request.

The lugs have a viewing window to check conductor location from 1.5mm² to 185mm². From 240mm² up the lugs have no window. The lugs have a viewing window to check conductor location from. They should be crimped with standard Australian tooling.



Part No.	Nominal Conductor (mm ²)	Stranding No.	ID Size (mm)	Stud Size (mm)	A (mm)	B (mm)	C (mm)	D (mm)	E (mm)	A/F Hex Die (mm)	No. Crimps	Crimp Die	Unit	Qty
CAL1.5-5	1.5	7/0.50	1.8	5	18	8	1	9	7	-	1	K26, K27, K28	BOX	100
CAL1.5-6	1.5	7/0.50	1.8	6	20	10	0.8	11	7	-	1	K26, K27, K28	BOX	100
CAL2.5-4	2.5	7/0.67	2.4	4	18	8	1	9	7	-	1	K26, K27, K28	BOX	100
CAL2.5-5	2.5	7/0.67	2.4	5	20	10	0.8	11	7	-	1	K26, K27, K28	BOX	100
CAL2.5-6	2.5	7/0.67	2.4	6	20	10	0.8	11	7	-	1	K26, K27, K28	BOX	100
CAL2.5-8	2.5	7/0.67	2.4	8	24	11	0.7	15	7	-	1	K26, K27, K28	BOX	100
CAL4-5	4	7/0.85	3.1	5	22	10	1	11	9	-	1	K26, K27, K28	BOX	100
CAL4-6	4	7/0.85	3.1	6	22	10	1	11	9	-	1	K26, K27, K28	BOX	100
CAL4-8	4	7/0.85	3.1	8	26	12	0.8	15	9	-	1	K26, K27, K28	BOX	100
CAL6-5	6	7/1.04	3.8	5	23	10	1.2	11	9	4.4	1	K26, K27, K28	BOX	100
CAL6-6	6	7/1.04	3.8	6	27	12	1	15	9	4.4	1	K26, K27, K28	BOX	100
CAL6-8	6	7/1.04	3.8	8	27	12	1	15	9	4.4	1	K26, K27, K28	BOX	100
CAL6-10	6	7/1.04	3.8	10	32	16	0.8	20	9	4.4	1	K26, K27, K28	BOX	100
CAL10-5	10	7/1.35	4.7	5	27	12	1.8	14	10	5.7	1	HT130-C-10	BOX	100
CAL10-6	10	7/1.35	4.7	6	27	12	1.8	14	10	5.7	1	HT130-C-10	BOX	100
CAL10-8	10	7/1.35	4.7	8	29	14	1.5	16	10	5.7	1	HT130-C-10	BOX	100
CAL10-10	10	7/1.35	4.7	10	32	16	1.3	19	10	5.7	1	HT130-C-10	BOX	100
CAL10-12	10	7/1.35	4.7	12	37	18	1.2	23	10	5.7	1	HT130-C-10	BOX	100
CAL16-6	16	7/1.70	5.5	6	37	11	2.3	14	19	6.3	1	HT130-C-16	BOX	50
CAL16-8	16	7/1.70	5.5	8	39	14	1.7	16	19	6.3	1	HT130-C-16	BOX	50
CAL16-10	16	7/1.70	5.5	10	41	16	1.5	18	19	6.3	1	HT130-C-16	BOX	50
CAL16-12	16	7/1.70	5.5	12	46	18	2.4	23	19	6.3	1	HT130-C-16	BOX	50
CAL25-6	25	19/1.35	7.1	6	41	14	2.4	16	21	7.7	1	HT130-C-25	BOX	50
CAL25-8	25	19/1.35	7.1	8	41	14	2.4	16	21	7.7	1	HT130-C-25	BOX	50
CAL25-10	25	19/1.35	7.1	10	44	16	2	19	21	7.7	1	HT130-C-25	BOX	50
CAL25-12	25	19/1.35	7.1	12	48	18	1.6	23	21	7.7	1	HT130-C-25	BOX	50
CAL35-6	35	19/1.53	8.2	6	44	16	3	18	21	9.2	1	HT130-C-35	BOX	50
CAL35-8	35	19/1.53	8.2	8	44	16	3	18	21	9.2	1	HT130-C-35	BOX	50
CAL35-10	35	19/1.53	8.2	10	46	18	3	20	21	9.2	1	HT130-C-35	BOX	50
CAL35-12	35	19/1.53	8.2	12	50	20	2	24	21	9.2	1	HT130-C-35	BOX	50
CAL50-6	50	19/1.78	9.5	6	48	18	3.2	20	22	10.4	1	HT130-C-50	BOX	50
CAL50-8	50	19/1.78	9.5	8	48	18	3.2	20	22	10.4	1	HT130-C-50	BOX	50
CAL50-10	50	19/1.78	9.5	10	48	18	3.2	20	22	10.4	1	HT130-C-50	BOX	50
CAL50-12	50	19/1.78	9.5	12	52	21	2.7	24	22	10.4	1	HT130-C-50	BOX	50
CAL70-6	70	19/2.14	11.2	6	54	21	3.3	24	24	11.5	1	HT130-C-70	BOX	25
CAL70-8	70	19/2.14	11.2	8	54	21	3.3	24	24	11.5	1	HT130-C-70	BOX	25
CAL70-10	70	19/2.14	11.2	10	54	21	3.3	24	24	11.5	1	HT130-C-70	BOX	25
CAL70-12	70	19/2.14	11.2	12	54	21	3.3	24	24	11.5	1	HT130-C-70	BOX	25
CAL70-16	70	19/2.14	11.2	16	64	28	2.4	34	24	11.5	1	HT130-C-70	BOX	25
CAL95-8	95	19/2.45	13.4	8	60	25	3.9	26	27	14.2	1	HT130-C-95	EA	1
CAL95-10	95	19/2.45	13.4	10	60	25	3.9	26	27	14.2	1	HT130-C-95	EA	1
CAL95-12	95	19/2.45	13.4	12	60	25	3.9	26	27	14.2	1	HT130-C-95	EA	1
CAL95-16	95	19/2.45	13.4	16	64	28	3.4	30	27	14.2	1	HT130-C-95	EA	1

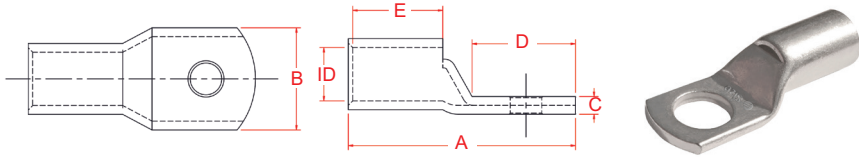
	Tooling	Part No.
INDENT	K9	CAL16-6 to CAL95-16
	HN1, HN2	CAL1.5-5 to CAL10-12
	K10/3	CAL1.5-5 to CAL6-10
HEX	K25, K26, K27	CAL1.5-5 to CAL16-12
	K28	CAL1.5-5 to CAL25-12
	K05	CAL6-5 to CAL50-12
	K06, K06C, B035	CAL6-5 to CAL50-12
	K06, B035	CAL70-6 to CAL95-16
	HT51, B51, CYO-510B	CAL16-6 to CAL50-12
	HT131-C, HT131LN-C, HT131-UC, RHC131, RHU131-C, B131-C, B131LN-C, B135-C	CAL16-6 to CAL50-12
	ECW-H3D, (TO 630MM2) RHU520	CAL16-6 to CAL95-16
	HT51, B51	CAL70-6 to CAL95-16
	HT131-C, HT131-UC, HT131LN-C, RHC131, RHU131-C, B131-C, B135-C, B131LN-C, CYO-510B	CAL70-6 to CAL95-16

In support of our policy of continuous product improvement we reserve the right to change materials and specifications without notice. Drawings, where used, are not to scale. All dimensions are in millimetres and sizes given are approximate. Where possible, technical MSDS data sheets are made available on the website. All products should be installed and used in accordance with manufacturer's instructions provided. Warning: products may be the subject of registered designs and patents. Refer to website for terms and conditions on warranty.

COPPER CRIMP LUGS 120-1000mm²

CABAC's Lugs are made from 99.9%+ cu high conductivity annealed copper which gives the best electrical properties possible. They are capable of withstanding a continuous operating temperature of 155°C, which is well above the temperature properties of most lugs. The lugs comply with AS4325.1 and test reports are available on request.

The lugs have a viewing window to check conductor location from 1.5mm² to 185mm². From 240mm² up the lugs have no window, because they are generally used outdoors. They should be crimped with standard Australian tooling.



Part No.	Nominal Conductor (mm ²)	Stranding No.	ID Size (mm)	Stud Size (mm)	A (mm)	B (mm)	C (mm)	D (mm)	E (mm)	A/F Hex Die (mm)	No. Crimps	Crimp Die	Unit Qty
CAL120	120	37/2.03	15.6	-	64	29	5	26	30	16.5	1	HT130-C-120	EA 1
CAL120-8	120	37/2.03	15.6	8	64	29	5	26	30	16.5	1	HT130-C-120	EA 1
CAL120-10	120	37/2.03	15.6	10	64	29	5	26	30	16.5	1	HT130-C-120	EA 1
CAL120-12	120	37/2.03	15.6	12	64	29	5	26	30	16.5	1	HT130-C-120	EA 1
CAL120-16	120	37/2.03	15.6	16	68	29	5	30	30	16.5	1	HT130-C-120	EA 1
CAL120-20	120	37/2.03	15.6	20	81	34	4	42	30	16.5	1	HT130-C-120	EA 1
CAL150	150	37/2.25	16.7	-	71	32	5.5	32	30	18.3	2	HT130-C-150	EA 1
CAL150-8	150	37/2.25	16.7	8	71	32	5.5	32	30	18.3	2	HT130-C-150	EA 1
CAL150-10	150	37/2.25	16.7	10	71	32	5.5	32	30	18.3	2	HT130-C-150	EA 1
CAL150-12	150	37/2.25	16.7	12	80	32	5.5	41	30	18.3	2	HT130-C-150	EA 1
CAL150-16	150	37/2.25	16.7	16	80	32	5.5	41	30	18.3	2	HT130-C-150	EA 1
CAL185-10	185	37/2.52	18.4	10	74	35	5.7	32	32	20	1 round, 2 compacted	HT130-C-185	EA 1
CAL185-12	185	37/2.52	18.4	12	83	35	5.7	41	32	20	1 round, 2 compacted	HT130-C-185	EA 1
CAL185-16	185	37/2.52	18.4	16	83	35	5.7	41	32	20	1 round, 2 compacted	HT130-C-185	EA 1
CAL185-20	185	37/2.52	18.4	20	84	38	5	42	32	20	1 round, 2 compacted	HT130-C-185	EA 1
CAL240	240	61/2.25	21.2	-	92	40	7.1	42	38	23.1	3	HT130-C-240	EA 1
CAL240-10	240	61/2.25	21.2	10	92	40	7.1	42	38	23.1	3	HT130-C-240	EA 1
CAL240-12	240	61/2.25	21.2	12	92	40	7.1	42	38	23.1	3	HT130-C-240	EA 1
CAL240-16	240	61/2.25	21.2	16	92	40	7.1	42	38	23.1	3	HT130-C-240	EA 1
CAL300	300	61/2.52	23.5	-	101	45	7.8	46	42	26	3	HT130-C-300	EA 1
CAL300-10	300	61/2.52	23.5	10	101	45	7.8	46	42	26	3	HT130-C-300	EA 1
CAL300-12	300	61/2.52	23.5	12	101	45	7.8	46	42	26	3	HT130-C-300	EA 1
CAL300-16	300	61/2.52	23.5	16	101	45	7.8	46	42	26	3	HT130-C-300	EA 1
CAL400	400	61/2.85	26.8	-	114	50	7.7	52	44	28.1	3	ECW-H3D-400	EA 1
CAL400-10	400	61/2.85	26.8	10	114	50	7.7	52	44	28.1	3	ECW-H3D-400	EA 1
CAL400-12	400	61/2.85	26.8	12	114	50	7.7	52	44	28.1	3	ECW-H3D-400	EA 1
CAL400-16	400	61/2.85	26.8	16	114	50	7.7	52	44	28.1	3	ECW-H3D-400	EA 1
CAL500	500	61/3.20	30	-	124	56	8.5	56	48	31	3	ECW-H3D-500	EA 1
CAL500-10	500	61/3.20	30	10	124	56	8.5	56	48	31	3	ECW-H3D-500	EA 1
CAL500-12	500	61/3.20	30	12	124	56	8.5	56	48	31	3	ECW-H3D-500	EA 1
CAL500-16	500	61/3.20	30	16	124	56	8.5	56	48	31	3	ECW-H3D-500	EA 1
CAL630	630	59/3.80	34	-	134	65	11	56	56	37	4	ECW-H3D-630	EA 1
CAL630-10	630	59/3.80	34	10	134	65	11	56	56	37	4	ECW-H3D-630	EA 1
CAL630-12	630	59/3.80	34	12	134	65	11	56	56	37	4	ECW-H3D-630	EA 1
CAL630-16	630	59/3.80	34	16	134	65	11	56	56	37	4	ECW-H3D-630	EA 1
CAL800	800	127/2.85	39.3	-	275	76	14	125	105	43.2	4	RHU520-800	EA 1
CAL1000	1000	127/3.20	44	-	295	85	16	125	110	48	4	RHU520-1000	EA 1

INDENT HEX

Tooling	Part No.
K9	CAL120 to CAL120-20
K06, K06C, B035	CAL120 to CAL120-20
HT51, B51	CAL120 to CAL185-12
ECW-H3D, (TO 630MM2) RHU520	CAL120 to CAL800
HT131-C, HT131-UC, HT131LN-C, RHC131, RHU131-C, B131-C, B135-C, B131LN-C, CY0-510B	CAL120 to CAL300

In support of our policy of continuous product improvement we reserve the right to change materials and specifications without notice. Drawings, where used, are not to scale. All dimensions are in millimetres and sizes given are approximate. Where possible, technical MSDS data sheets are made available on the website. All products should be installed and used in accordance with manufacturer's instructions provided. Warning: products may be the subject of registered designs and patents. Refer to website for terms and conditions on warranty.