

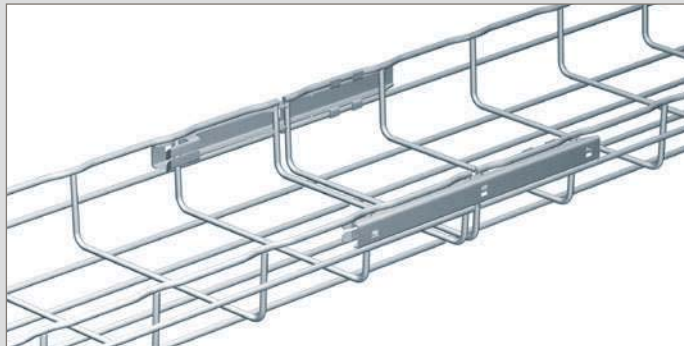
couplers – length to length

AUTOCLIC

■ AUTOCLIC – couplers

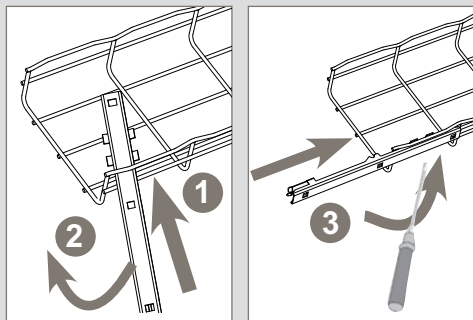
AUTOCLIC couplers are supplied in packs of 50. Rapid fit with screwdriver. No additional fasteners required

■ Installation

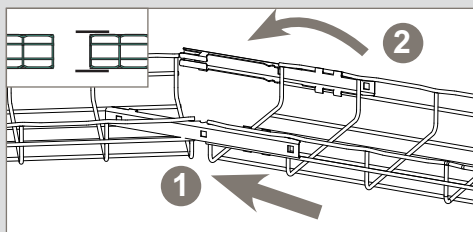


AUTOCLIC couplers are used in pairs across the side rail joint of two lengths of tray as shown

■ Assembly

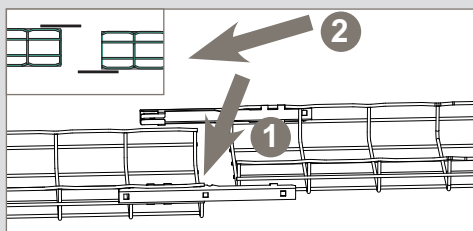


1. Insert coupler
2. Twist into position
3. Pull into place with screwdriver (not supplied)



Fit Autoclic to both sides of one length of tray and insert into second length as shown

OR



Fit Autoclic in an offset pattern on alternate ends of each length



Fast assembling



Fixing without nuts and bolts

→ Straight lengths : see p. 44-55

■ Assembly (continued)

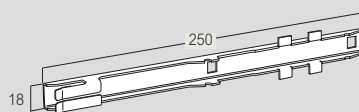
The table below indicates the recommended quantity of AUTOCLIC couplers required per width of steel wire cable tray
Note: wider widths need the addition of either CEFAS (p. 64) or KITASSTR (p. 67) to provide additional support to the base

A → ← A = side coupling B = base coupling

↔ →	50		100		150 / 200		300		400 → 500		600	
	A	B	A	B	A	B	A	B	A	B	A	B
CF54	2	0	2	0	2	0	2	1	2	2	2	3
CF105	-	-	2	0	2	1	2	2	⊖	⊖	⊖	⊖

■ Dimensions and weights

↕ 54 / 105 mm ↔ 50 → 600 mm



	Weight (kg)			
	GS	GC	304L	316L
AUTOCLIC	0-09	0-10	0-10	0-10

Please use Cat. No. when placing your order, see p. 20

All weights are given in Kilograms (kg)

Key: GS	Pre-galvanised	304L	Stainless steel 304 L
GC	Hot dip galvanised after manufacture	316L	Stainless steel 316 L

For detailed information related to finishes, refer to p. 132-133

All dimensions (mm) are nominal