

F-M

RING TERMINAL, PRE-INSULATED WITH PVC, FOR COPPER CONDUCTORS



CERTIFICATIONS & APPROVALS

 UL (cULus)

Features

TECHNICAL INFORMATION

Minimum operating temperature	-20°C
Maximum operating temperature	75°C
Threshold of operating temperature for short periods	90°C
Number of holes on the palm	1
Type of insulation	partial
Easy insertion input	Yes
Surface treatment	tin plating
Crimping geometry	radial

LOGISTIC

Unit in minimal packaging	100PCE
---------------------------	--------

CERTIFICATIONS

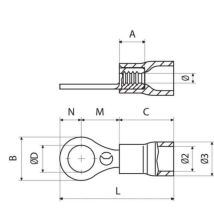
Self-extinguishing fire class according to UL 94	V0
--	----

MATERIAL COMPOSITION AND TREATMENTS

Conductor body material	Rame elettrolitico con purezza superiore al 99,95%
Insulated cover material	Polyvinylchloride PVC
Annealing	Yes

CLASSIFICATION AND DATA ORDERING

Customs code	85369010
--------------	----------



RF-M

Insulated cover colour **red** Range of cable cross section [mm²] **0.25**

tipo	Screw diameter	ØD [mm]	B [mm]	N [mm]	M [mm]	I [mm]	Tightening torque (high conductivity screw) [nm]	Tightening torque (8.8 grade screw) [nm]	L [mm]	A [mm]	C [mm]	Ø2 [mm]	Ø3 [mm]	Ø [mm]	Cable stripping length [mm]	Unit in standard packaging [pce]	ROHS compliant	EN 45545-2 certification (r22)	EN 45545-2 certification (r23)	Refer stan
RF-M2	M2	2.2	5.6	2.8	4.5	8.7			17.3	4.2	10.1	4	5.5	1.8	5	3000	Yes			
RF-M3	M3	3.2	5.6	2.8	4.5	8.7	0.5	0.5	17.3	4.2	10.1	4	5.5	1.8	5	3000	Yes	HL2 [R22]	HL3 [R23]	U 48 U 48
RF-M3,5	M3.5	3.7	5.6	2.8	4.5	8.7			17.3	4.2	10.1	4	5.5	1.8	5	3000	Yes			
RF-M3,5/1	M3.5	3.7	6.2	3.1	7.1	11.3			20.2	4.2	10.1	4	5.5	1.8	5	3000	Yes			
RF-M4	M4	4.3	7	3.5	6.5	10.7			20	4.2	10.1	4	5.5	1.8	5	3000	Yes			
RF-M4/3	M4	4.3	7.8	3.9	7.1	11.3			21	4.2	10.1	4	5.5	1.8	5	3000	Yes			
RF-M5	M5	5.3	7.8	3.9	7.1	11.3			21	4.2	10.1	4	5.5	1.8	5	2500	Yes			
RF-M6	M6	6.4	9.4	4.7	8.1	12.3	5	7	22.8	4.2	10.1	4	5.5	1.8	5	2500	Yes			
RF-M6/1	M6	6.4	12	6	10.3	14.5	5	7	26.3	4.2	10.1	4	5.5	1.8	5	2000	Yes			
RF-M7	M7	7.2	9.4	4.7	8.1	12.3			22.8	4.2	10.1	4	5.5	1.8	5	2500	Yes			
RF-M8	M8	8.4	12	6	10.3	14.5	10	20	26.3	4.2	10.1	4	5.5	1.8	5	2000	Yes			
RF-M10	M10	10.5	15.5	7.75	13.05	17.25	20	35	30.8	4.2	10.1	4	5.5	1.8	5	1500	Yes			
RF-M12	M12	13	18	9	15.5	19.7	40	50	34.5	4.2	10.1	4	5.5	1.8	5	1500	Yes			

BF-M

Insulated cover colour **blue** Range of cable cross section [mm²] **1.5**

tipo	Screw diameter	ØD [mm]	B [mm]	N [mm]	M [mm]	I [mm]	Tightening torque (high conductivity screw) [nm]	Tightening torque (8.8 grade screw) [nm]	L [mm]	A [mm]	C [mm]	Ø2 [mm]	Ø3 [mm]	Ø [mm]	Cable stripping length [mm]	Unit in standard packaging [pce]	ROHS compliant
BF-M2	M2	2.2	5.6	2.8	5	9.2			17.9	4.2	10.1	4.9	6.4	2.4	5	3000	Yes
BF-M3	M3	3.2	5.6	2.8	5	9.2	0.5	0.5	17.9	4.2	10.1	4.9	6.4	2.4	5	2500	Yes
BF-M3,5	M3.5	3.7	5.6	2.8	5	9.2			17.9	4.2	10.1	4.9	6.4	2.4	5	2500	Yes
BF-M3,5/1	M3.5	3.7	6.2	3.1	6.5	10.7			19.7	4.2	10.1	4.9	6.4	2.4	5	2500	Yes
BF-M4	M4	4.3	8	4	6.5	10.7			20.6	4.2	10.1	4.9	6.4	2.4	5	2500	Yes
BF-M5	M5	5.3	8	4	7.5	11.7			21.6	4.2	10.1	4.9	6.4	2.4	5	2000	Yes
BF-M6	M6	6.4	9.4	4.7	8.6	12.8	5	7	23.4	4.2	10.1	4.9	6.4	2.4	5	2000	Yes
BF-M6/1	M6	6.4	12	6	10.3	14.5	5	7	26.4	4.2	10.1	4.9	6.4	2.4	5	2000	Yes
BF-M6/2	M6	6.4	8.4	4.2	5.4	9.6	5	7	19.7	4.2	10.1	4.9	6.4	2.4	5	2500	Yes
BF-M7	M7	7.2	10	5	7.8	12			22.9	4.2	10.1	4.9	6.4	2.4	5	2000	Yes

tipo	Screw diameter	ØD [mm]	B [mm]	N [mm]	M [mm]	I [mm]	Tightening torque (high conductivity screw) [nm]	Tightening torque (8.8 grade screw) [nm]	L [mm]	A [mm]	C [mm]	Ø2 [mm]	Ø3 [mm]	Ø [mm]	Cable stripping length [mm]	Unit in standard packaging [pce]	ROHS compliant
BF-M8	M8	8.4	12	6	10.3	14.5	10	20	26.4	4.2	10.1	4.9	6.4	2.4	5	1500	Yes
BF-M10	M10	10.5	15.5	7.75	13.05	17.25	20	35	30.9	4.2	10.1	4.9	6.4	2.4	5	1500	Yes
BF-M12	M12	13	18	9	15.5	19.7	40	50	34.6	4.2	10.1	4.9	6.4	2.4	5	1000	Yes

GF-M Insulated cover colour **yellow** Range of cable cross section [mm²]
4

tipo	Screw diameter	ØD [mm]	B [mm]	N [mm]	M [mm]	I [mm]	Tightening torque (high conductivity screw) [nm]	Tightening torque (8.8 grade screw) [nm]	L [mm]	A [mm]	C [mm]	Ø2 [mm]	Ø3 [mm]	Ø [mm]	Cable stripping length [mm]	Unit in standard packaging [pce]	ROHS compliant
GF-M3	M3	3.2	8	4	8.1	14.5	0.5	0.5	26.2	8	14.1	6.6	8.1	3.6	7	1000	Yes
GF-M3,5	M3,5	3.7	8	4	8.1	14.5			26.2	8	14.1	6.6	8.1	3.6	7	1000	Yes
GF-M4	M4	4.3	9	4.5	8.1	14.5			26.7	8	14.1	6.6	8.1	3.6	7	1000	Yes
GF-M5	M5	5.3	9	4.5	8.1	14.5			26.7	8	14.1	6.6	8.1	3.6	7	1000	Yes
GF-M6	M6	6.4	11	5.5	11.1	17.5	5	7	30.7	8	14.1	6.6	8.1	3.6	7	1000	Yes
GF-M6/1	M6	6.4	11	5.5	8.1	14.5	5	7	27.7	8	14.1	6.6	8.1	3.6	7	1000	Yes
GF-M7	M7	7.2	11	5.5	11.1	17.5			30.7	8	14.1	6.6	8.1	3.6	7	1000	Yes
GF-M8	M8	8.4	13.6	6.8	12.1	18.5	10	20	33	8	14.1	6.6	8.1	3.6	7	800	Yes
GF-M8/1	M8	8.4	11	5.5	8.1	14.5	10	20	27.8	8	14.1	6.6	8.1	3.6	7	1000	Yes
GF-M10	M10	10.5	13.6	6.8	12.1	18.5	20	35	33	8	14.1	6.6	8.1	3.6	7	800	Yes
GF-M10/1	M10	10.5	15.5	7.75	13.85	20.25	20	35	35.7	8	14.1	6.6	8.1	3.6	7	800	Yes
GF-M12	M12	13	19	9.5	15.1	21.5	40	50	38.7	8	14.1	6.6	8.1	3.6	7	500	Yes
GF-M14	M14	15	21	10.5	16.1	22.5	65	70	40.7	8	14.1	6.6	8.1	3.6	7	500	Yes
GF-M16	M16	17	24	12.5	17.1	23.5	90	90	43.2	8	14.1	6.6	8.1	3.6	7	500	Yes