

## F-PP

FLAT TIP TERMINAL, PRE-INSULATED WITH PVC, FOR COPPER CONDUCTORS



### CERTIFICATIONS & APPROVALS

 UL (cULus)

## Features

### TECHNICAL INFORMATION

Minimum operating temperature	-20°C
Maximum operating temperature	75°C
Threshold of operating temperature for short periods	90°C
Type of insulation	partial
Easy insertion input	Yes
Surface treatment	tin plating
Crimping geometry	radial

### MATERIAL COMPOSITION AND TREATMENTS

Conductor body material	Rame elettrolitico con purezza superiore al 99,95%
Insulated cover material	Polyvinylchloride PVC
Annealing	Yes

### WEIGHT AND DIMENSIONS

Tip type	blade
----------	-------

### LOGISTIC

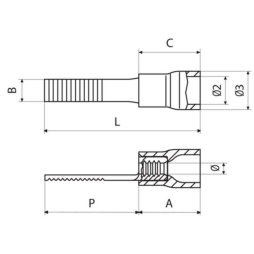
Unit in minimal packaging	100PCE
---------------------------	--------

### CLASSIFICATION AND DATA ORDERING

Customs code	85369010
--------------	----------

### CERTIFICATIONS

Self-extinguishing fire class according to UL 94	V0
--	----



**RF-PP** Insulated cover colour **red** Range of cable cross section [mm<sup>2</sup>] **0.25**

tipo	B [mm]	P [mm]	L [mm]	A [mm]	C [mm]	Ø2 [mm]	Ø3 [mm]	Ø [mm]	Cable stripping length [mm]	Unit in standard packaging [pce]	ROHS compliant
RF-PP12	3	12.8	22.8	4.2	10.1	4	5.5	1.8	5	3000	Yes
RF-PP12/1	3	11.3	21.3	4.2	10.1	4	5.5	1.8	5	3000	Yes
RF-PP12/19	1.9	13.2	23.2	4.2	10.1	4	5.5	1.8	5	3000	Yes
RF-PP12/23	2.3	13.2	23.2	4.2	10.1	4	5.5	1.8	5	2500	Yes
RF-PP14	3	14.8	24.8	4.2	10.1	4	5.5	1.8	5	2500	Yes
RF-PP16/23	2.3	17.2	27.2	4.2	10.1	4	5.5	1.8	5	2500	Yes

**BF-PP** Insulated cover colour **blue** Range of cable cross section [mm<sup>2</sup>] **1.5**

tipo	B [mm]	P [mm]	L [mm]	A [mm]	C [mm]	Ø2 [mm]	Ø3 [mm]	Ø [mm]	Cable stripping length [mm]	Unit in standard packaging [pce]	ROHS compliant
BF-PP10	3.5	10	20	4.2	10.1	4.9	6.4	2.4	5	2500	Yes
BF-PP12	3.5	12.8	22.8	4.2	10.1	4.9	6.4	2.4	5	2500	Yes
BF-PP12/25	2.5	13.3	23.3	4.2	10.1	4.9	6.4	2.4	5	2000	Yes
BF-PP12/29	2.9	13.3	23.3	4.2	10.1	4.9	6.4	2.4	5	2500	Yes
BF-PP16/25	2.5	17.2	27.2	4.2	10.1	4.9	6.4	2.4	5	2500	Yes

**GF-PP** Insulated cover colour **yellow** Range of cable cross section [mm<sup>2</sup>] **4**

tipo	B [mm]	P [mm]	L [mm]	A [mm]	C [mm]	Ø2 [mm]	Ø3 [mm]	Ø [mm]	Cable stripping length [mm]	Unit in standard packaging [pce]	ROHS compliant
GF-PP12	4	13.3	27.4	8	14.1	6.6	8.1	3.6	7	1000	Yes
GF-PP17	2.9	19.1	33.3	8	14.1	6.6	8.1	3.6	7	1000	Yes