

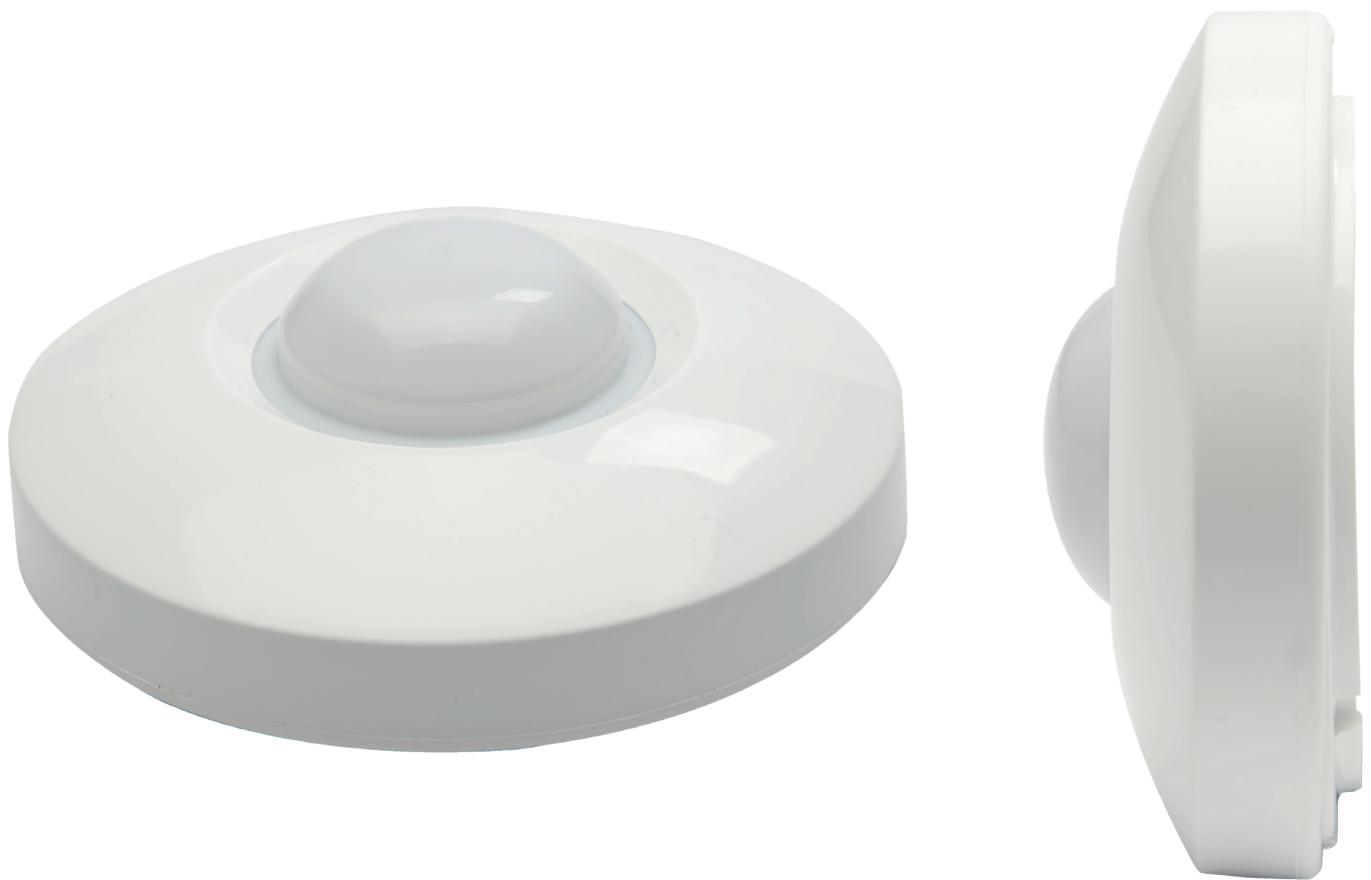
CHALLENGER



INTRUDER PIR DETECTION

AD03N

360° CEILING MOUNT INTRUDER PIR



- 7M Range
- 360° Coverage
- Grade 1
- Surface Mount
- Indoor Use

Scan here to connect with us
on LinkedIn and Instagram and
for our website and catalogues



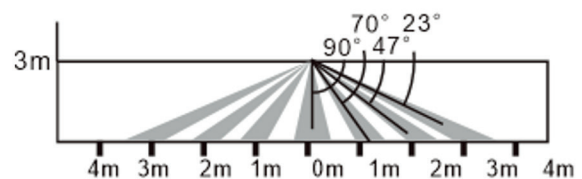
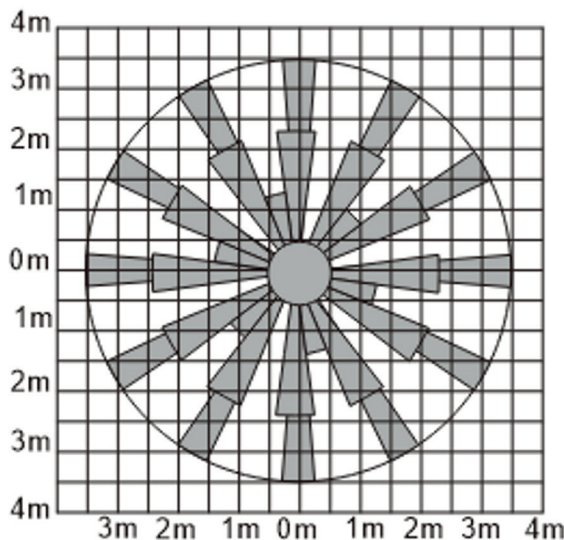
CHALLENGER SECURITY PRODUCTS



INTRUDER PIR DETECTION AD03N

360° CEILING MOUNT INTRUDER PIR

	AD03N
Operating Voltage	9-16vDC
Current Draw	15mA @ 12vDC
Tamper Output	Yes, N/C
Alarm Output	N/C Contact
Operating temperature	-10°C - 50°C
Installation height	2.4m to 3.6m
Walk Test	LED Indicator
Dimensions (mm)	86 ø x 25(d)
Anti-white light interference	>6500LUX (indoor)



Scan here to connect with us on LinkedIn and Instagram and for our website and catalogues



CHALLENGER SECURITY PRODUCTS