

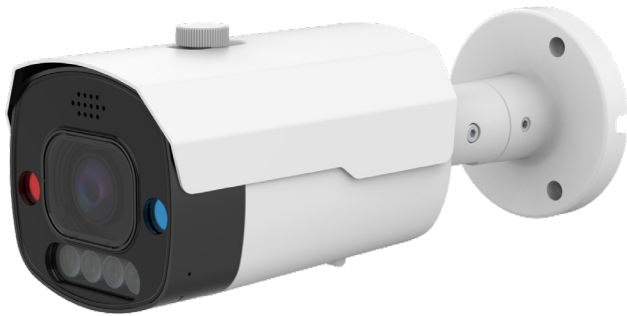


FULL COLOUR WIRED POE IP CAMERAS

CHIPCAM15 & CHIPCAM16

[Data Sheet](#)

5MP HD IP VARIFOCAL LENS FULL COLOUR BULLET CAMERAS



CHIPCAM15



CHIPCAM16

FEATURES

- Full Colour image at night
- Power over Ethernet [PoE]
- ONVIF compliant
- 2.8-12mm varifocal lens
- 12V DC power port
- 3 year warranty





FULL COLOUR WIRED POE IP CAMERAS

CHIPCAM15 & CHIPCAM16

	PART CODE	CHIPCAM15	CHIPCAM16
Camera Specs	Camera Casing colour	White	Black
Video	Imaging Device	1/2.7"	1/2.7"
Lens Type	Effective Pixels	5MP 2880(H)x1620(V)	5MP 2880(H)x1620(V)
	Scanning System	Progressive CMOS	Progressive CMOS
	Min. Illumination	Color 0.002lux @ F1.0(AGC ON) ; B/W 0 lux @ IR ON	Color 0.002lux @ F1.0(AGC ON) ; B/W 0 lux @ IR ON
Operational	Focal Length (Zoom Ratio)	2.8-12mm	2.8-12mm
	Max. Aperture Ratio	F No. 1.2	F No. 1.2
	Angular Field of View	H:113(W)-35(T)° V : 59(W)-20(T)° D : 138(W)-41(T)°	H:113(W)-35(T)° V : 59(W)-20(T)° D : 138(W)-41(T)°
Operational	Min. Object Distance	1.5m	1.5m
	Lens Type	Ø16.7	Ø16.7
	IR LED	4	4
	WarmLight	4	4
	Red Blue Light	2(1 Red&1 Blue)	2(1 Red&1 Blue)
	IR Viewable Length	Up to 35m	Up to 35m
	WarmLight Viewable Length	Up to 30m	Up to 30m
	Type of complementary light	Default warm light, switchable infrared light	Default warm light, switchable infrared light
	Motion Detection	Off/On (8 Level)	Off/On (8 Level)
	Wide Dynamic Range	WDR	WDR
	Digital Noise Reduction	3D DNR	3D DNR
	Image Setting	Full Color Mode/Day&Night Mode/Schedule	Full Color Mode/Day&Night Mode/Schedule
	White Balance	Auto/Manual	Auto/Manual
	Electronic Shutter Speed	1/5 ~ 1/20000s	1/5 ~ 1/20000s
	On-Board Storage	Micro SD slot, up to 256GB	Micro SD slot, up to 256GB
	Alarm	NA	NA
	Audio	Built-in microphone&Speaker	Built-in microphone&Speaker
	Custom Voice	Yes	Yes
	Hardware Reset	Yes	Yes
	Smart Feature	Face Recognition(FR) Human&Vehicle Detection(PD&VD) Perimeter Intrusion Detection(PID) Line Crossing Detection(LCD) Cross Counting(CC) Stationary Object Detection(SOD) Heat Map(HM) Crowd Density Detection(CD) Queue Length Detection(QD) license Plate Detection(LPD) Rare Sound Detection(RSD)	Face Recognition(FR) Human&Vehicle Detection(PD&VD) Perimeter Intrusion Detection(PID) Line Crossing Detection(LCD) Cross Counting(CC) Stationary Object Detection(SOD) Heat Map(HM) Crowd Density Detection(CD) Queue Length Detection(QD) license Plate Detection(LPD) Rare Sound Detection(RSD)





FULL COLOUR WIRED POE IP CAMERAS

CHIPCAM15 & CHIPCAM16

	PART CODE	CHIPCAM15	CHIPCAM16
Network	Ethernet	RJ45(10/100BASE-T)	RJ45(10/100BASE-T)
	Video Compression Format	H.265/H.264	H.265/H.264
	Resolution	Main Stream@30fps 5MP(2880x1620), 4MP(2592x1520) 3MP(2304x1296), 1080P(1920x1080), 960P(1280x960), 720P(1280x720) Sub Stream@30fps 720P(1280x720),VGA(640x480), QVGA(320x240) Mobile Stream@30fps VGA(640x480), QVGA(320x240)	Main Stream@30fps 5MP(2880x1620), 4MP(2592x1520) 3MP(2304x1296), 1080P(1920x1080),960P(1280x960), 720P(1280x720) Sub Stream@30fps 720P(1280x720), VGA(640x480), QVGA(320x240) Mobile Stream@30fps VGA(640x480), QVGA(320x240)
	Video Quality Ajustment	256Kbps ~ 8Mbps	256Kbps ~ 8Mbps
	Bitrate control method	CBR/VBR	CBR/VBR
	IP	IPv6	IPv6
	Protocol	TCP/IP,HTTP,DHCP,DNS,DDNS,RTP/ RTSP, SMTP,NTP,UPnP,SNMP,HTTPS,FTP	TCP/IP,HTTP,DHCP,DNS,DDNS,RTP/RTSP, SMTP,NTP,UPnP,SNMP,HTTPS,FTP
	Security	IP address filter;complicated password;Authenticated username and password	IP address filter;complicated password;Authenticated username and password
	Application Programming Interface	ONVIF(Profile S/G/T)	ONVIF(Profile S/G/T)
	Streaming Method	Unicast/Multicast	Unicast/Multicast
	Application Programming Interface	ONVIF(Profile S/G/T)	ONVIF(Profile S/G/T)
	Web Viewer	IE10/11 Safari V12.1 above Firefox V.52 above Google chrome V.57 above Edge V.79 above	IE10/11 Safari V12.1 above Firefox V.52 above Google chrome V.57 above Edge V.79 above
Environmental	Operating Conditions	-35~+60°C/less than ≤ 90% RH	-35~+60°C/less than ≤ 90% RH
	Ingress Protection	IP66	IP66
Electrical	Input Voltage / Current	D12V/POE(IEEE802.3af)	D12V/POE(IEEE802.3af)
	Power Consumption	DC12V : max 9.6W ; POE(48V): max 11.7W	DC12V : max 9.6W ; POE(48V): max 11.7W
Mechanical	Material	Metal	Metal

