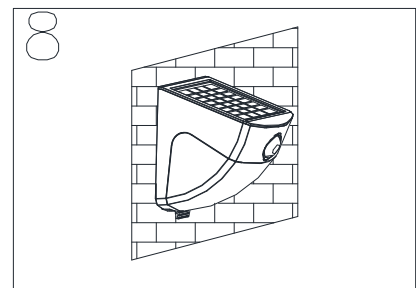
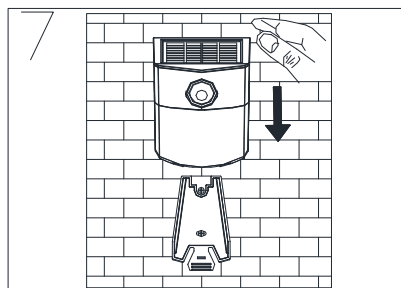
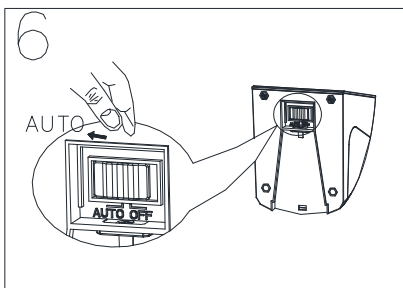
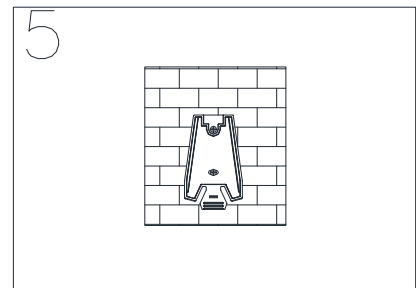
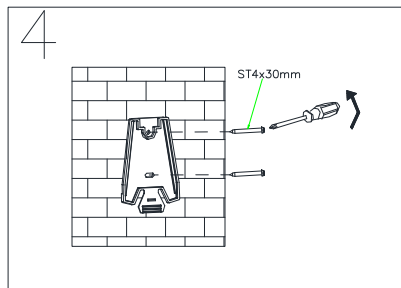
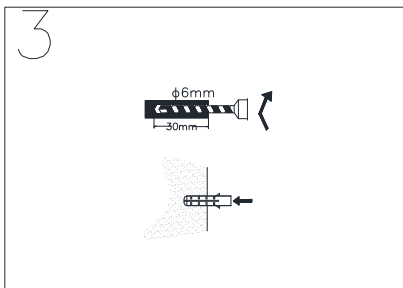
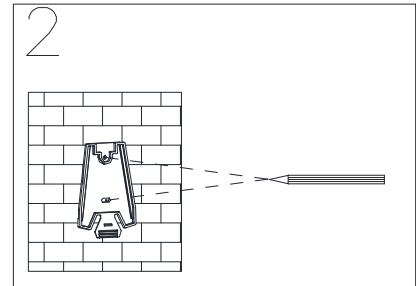
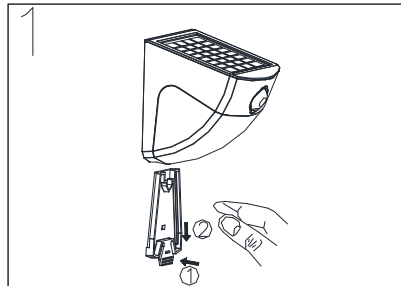
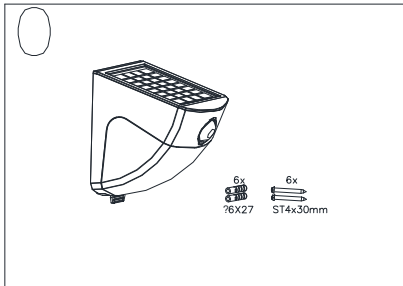


CHALLENGER

SOLAR PIR SENSOR LIGHT OPERATION INSTRUCTIONS SLSW1



IMPORTANT:

Please ensure that you charge the solar light in maximum sunlight for a minimum period of 3 days to ensure the internal battery is charged before switching on the light, in order that the lights work on a full charge.

The most important thing to remember for the operation of your SOLAR PIR SENSOR LIGHT is that it works from the power contained in DIRECT SUNLIGHT. The more direct sunlight the solar panel receives in a day, the longer the light will operate.

■ Main Unit:

The main unit contains 4*0.5W LED, motion sensor and integral batteries (Li Rechargeable battery, 3.7V 1800mAh). When deciding where to install this unit, keep in mind that the motion sensor that activates the light has a "field of vision" of approx. 7 meters (in front of the light) 90° (horizontal) at 25°C environmental temperature when mounted at a height of 2.5m.

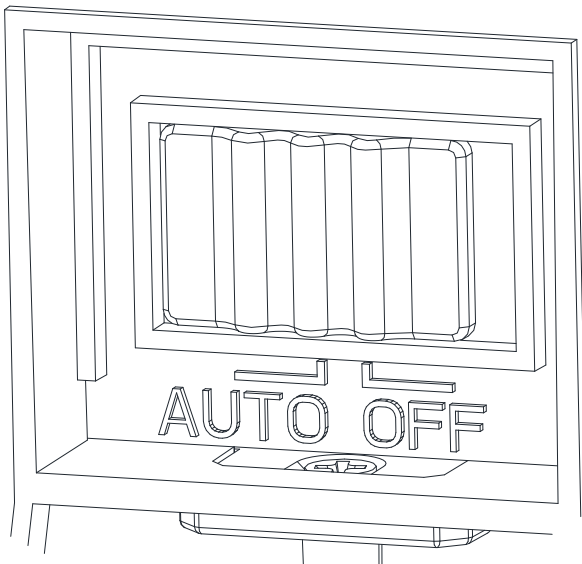
■ Solar Panel:

The solar panel is the power source for the SOLAR PIR SENSOR LIGHT. It converts the sun's energy into electricity that charges the battery stored in the main unit. This requires DIRECT SUNLIGHT onto the face of solar panel for as long as possible over the course of a day.

■ INSTALLATION STEPS

1. Press the tab on the backplate underneath the unit and push the light upwards to release from the backplate.
2. Use the backplate to mark the position of screw holes onto the mounting surface.
4. Fix the backplate using appropriate fixings and ensure the surface is free from vibration.
5. Turn the switch to "AUTO" position
6. Refit the Main unit onto the Wall mounting backplate.
7. Screw the bracket locking screw under the main unit.

■ FINAL ADJUSTMENT AND START-UP



After you have successfully installed your SOLAR PIR SENSOR LIGHT, you are almost ready for operation with a few final steps:

Initial 3-days Charge:

On the rear of the main unit there is a dial switch with 2 positions: ● OFF ● AUTO

AUTO —

Position for normal operation.

OFF ---

- Position for shipping or extended periods where the unit is not being used.
- Position for initial 3-day charge before final adjustment and first use.

For now, turn the dial switch to the OFF position. In this position the solar panel will charge the battery without activating the unit. Leave the switch in this position for 3 sunny days to ensure that the battery has a full charge prior to motion sensor and normal operation.

■ Walking-test:

At night, walking slowly in its detection area, the sensor can detect moving invisible infra-red radiation given off by a human body which will turn on the light. Test the coverage of the area by walking slowly around until not to switch on the light.

■ CLEANING

It is important that the solar panel is kept free of dirt and debris. A dirty solar panel will not allow the battery to fully charge and this will shorten the life of battery and cause the light to malfunction

■ STORAGE

If you wish to store your light indoors for more than two or three days, follow the below steps to prevent damage to the battery:

1. Turn the switch to the OFF position
2. Store the unit where it can receive some sunlight or room light each day. The battery needs light to maintain a charge during storage.

■ TROUBLE SHOOTING:

Symptom: Light won't activate in normal operation.

- 1) The main unit switch is in the OFF position.
- 2) The motion sensor is positioned to face oncoming movement.
- 3) Change the battery

Symptom: Light turns on during the day.

- 1) Make sure that the unit is not located in shadow area i.e. under eaves.

Symptom: Light is not as bright as normal.

- 1) Change the battery or ensure a full 3 day charge has occurred.

SPECIFICATION:

Lamp:	4x0.5W white Everlight
Lumen:	240lm
Colour temp:	5000K
PIR Range:	7m
Lux Level:	10 ± 10LUX
Timer:	60s
Battery:	3.7V 1800mAh Li
IP rating:	44
Operating Temperature:	-5°C to 40°C
Dimensions:	101x121x143mm
Weight:	406g

Light Source Maintenance:

The light source of this luminaire is not replaceable; in case the light source need to be replaced (e.g. at the end of its life), the whole luminaire shall be replaced.

Environment:

Please do not dispose the packaging as unsorted waste, use the recycling facilities provided by your local authorities.

When the light fitting comes to the end of its life or you choose to update or upgrade by replacing it, then do not dispose with your normal household waste.

Please recycle where facilities exist. When you need to dispose of this fitting, check with your retailer or local authority for suitable options.

Due to our policy of continuous improvement we reserve the right to change specification without prior notice. Errors and omissions excepted. These instructions have been carefully checked prior to publication. However, no responsibility can be accepted by Challenger for any misinterpretation of these instructions.

CHALLENGER SECURITY PRODUCTS

10 Sandersons Way,
Blackpool, FY4 4NB

Email: enquiries@challenger.co.uk

Web: www.challenger.co.uk

