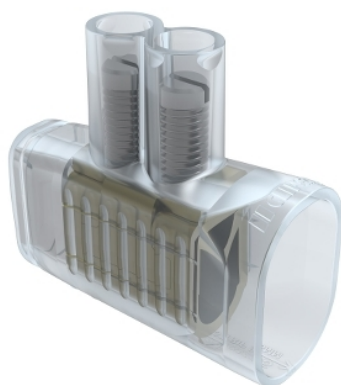


## Product data sheet

### Characteristics

# 563K35

Clipsal - 500 Series, Cable Connectors, Two Screw, Clear Insulated, 80A, Suits up to 2 x 35mm<sup>2</sup> Cables



#### Main

Colour	Housing: transparent
Product brand	Clipsal
Provided equipment	2 x screw

#### Complementary

Rated voltage	415...500 V AC
Cable cross section	25...35 mm <sup>2</sup> solid or flexible 2 without cable end sleeve
Connector type	Screw terminals
Contacts material	Brass
Material	PP (polypropylene): housing Zinc plated steel: screw

#### Packing Units

Unit Type of Package 1	PCE
Number of Units in Package 1	1
Package 1 Height	5.3 cm
Package 1 Width	2.3 cm
Package 1 Length	5.8 cm
Package 1 Weight	64 g
Unit Type of Package 2	BB1
Number of Units in Package 2	10
Package 2 Height	74 cm
Package 2 Width	94 cm
Package 2 Length	122 cm
Package 2 Weight	0.67 kg
Unit Type of Package 3	CAR
Number of Units in Package 3	100
Package 3 Height	117 cm
Package 3 Width	250 cm
Package 3 Length	310 cm
Package 3 Weight	7.4 kg

The information provided in this documentation contains general descriptions and/or technical characteristics of the performance of the products contained herein. This documentation is not intended as a substitute for and is not to be used for determining suitability or reliability of these products for specific user applications. It is the duty of any such user or integrator to perform the appropriate and complete risk analysis, evaluation and testing of the products with respect to the relevant specific application or use thereof. Neither Schneider Electric Industries SAS nor any of its affiliates or subsidiaries shall be responsible or liable for misuse of the information contained herein.

## Offer Sustainability

Sustainable offer status	Green Premium product
REACH Regulation	<a href="#">REACH Declaration</a>
EU RoHS Directive	Compliant <a href="#">EU RoHS Declaration</a>
Mercury free	Yes
China RoHS Regulation	<a href="#">China RoHS Declaration</a>
RoHS exemption information	<a href="#">Yes</a>
Environmental Disclosure	<a href="#">Product Environmental Profile</a>