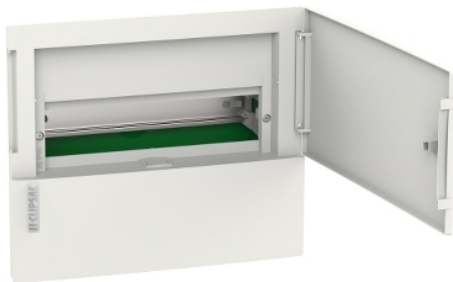


Product data sheet

Characteristics

RMXE112F

Clipsal Resi MAX, Consumer switchboard 1 row 12 modules Flush Mounted



Main

| | |
|---------------------------------|--|
| Range | Resi MAX |
| Product brand | Clipsal |
| Product or component type | Enclosure |
| Enclosure type | Mini enclosure for modular device |
| Device application | Distribution |
| Number of 18 mm modules per row | 12 |
| Provided equipment | DIN rail Earth terminal block Neutral terminal block |
| Type of front cover | Plain |
| Colour | White (RAL 9003) |
| Door type | Plain door |

Complementary

| | |
|---------------------------|--|
| Enclosure mounting | Flush |
| Number of horizontal rows | 1 |
| [In] rated current | 63 A |
| Number of ways | 12 ways |
| Cable entry | Knock-out top and bottom Knock-out rear |
| Type of rail | 35 mm asymmetrical rail |
| Number of terminal blocks | 12 earth (screw connection) 14 neutral (screw connection) |
| Enclosure material | Technoplastic |
| Width | 270 Mm external 294 mm (with door) |
| Height | 228 Mm external 252 mm (with door) |
| Depth | 80 Mm external 98 mm (with door) |

Environment

| | |
|-------------------------|----------------------------------|
| Fire resistance | Door: 650 °C Back box: 850 °C |
| IP degree of protection | IP40 |
| IK degree of protection | IK07 |

Packing Units

| | |
|------------------------------|---------|
| Unit Type of Package 1 | PCE |
| Number of Units in Package 1 | 1 |
| Package 1 Height | 10.5 cm |
| Package 1 Width | 27.0 cm |
| Package 1 Length | 31.0 cm |
| Package 1 Weight | 0.94 kg |
| Unit Type of Package 2 | P12 |

| | |
|------------------------------|----------|
| Number of Units in Package 2 | 84 |
| Package 2 Height | 80.0 cm |
| Package 2 Width | 80.0 cm |
| Package 2 Length | 120.0 cm |
| Package 2 Weight | 90.96 kg |

Offer Sustainability

| | |
|-------------------|--|
| EU RoHS Directive | Not applicable, out of EU RoHS legal scope |
|-------------------|--|