

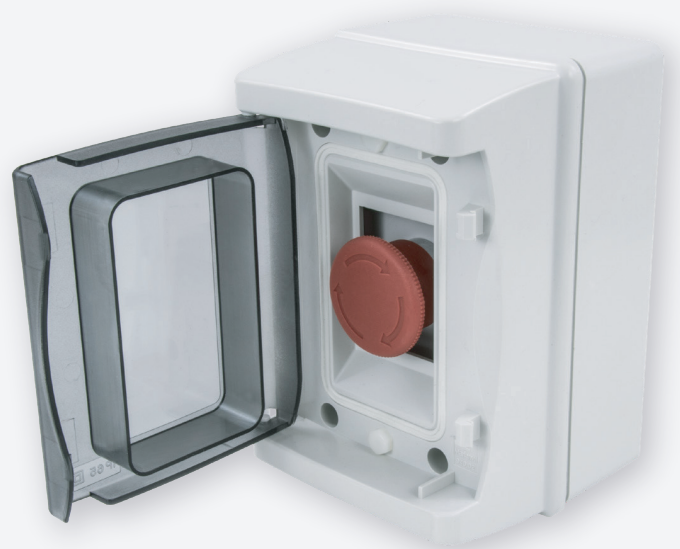
# Emergency Stop Twist Release

Pushbutton Station c/w 1 NC Contact & Protective Flap



### Technical Features:

- Snap closing tinted door
- Blank sides
- Surface mounting
- IP65
- Pre-assembled complete with contact block



### Product Specification

IP Rating	IP65
Weight	0.402kg
Cable Entry	Blank Sides
Number of Ways	1
Mounting	Surface
Contact Configuration	1 NC
Colour	Grey
Material	Plastic
Compliance	UKCA, CE
Guarantee	1 Year
Operation Type	Twist Release
Standards	EN 60947-5-1
Depth	100mm
Height	156mm
Width	100mm

