

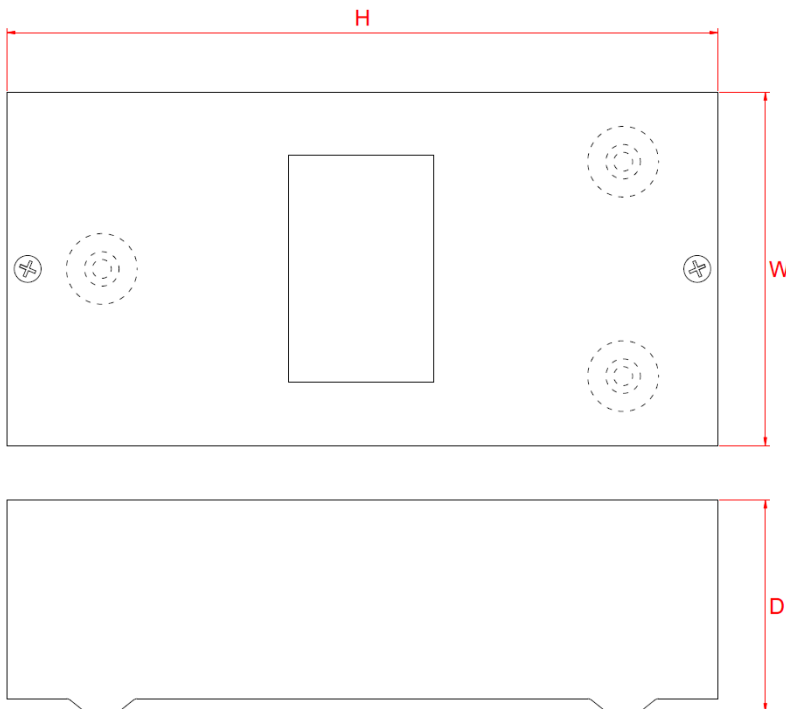
Unpopulated Unlidded Mini Metal Enclosures CU/M02-U, CU-M03-U, CU/M04-U



CONSTRUCTION AND FEATURES:

- Unpopulated, unlidded, mini metal enclosures
- Robust and lightweight
- 2 way, 3 way and 4 way variants
- All steel construction
- Pre-fitted DIN rail
- Pre-fitted earth terminal bar
- Flexibility to suit many applications
- Top and bottom knockout
- Conforms to BS EN 61439-1 and BS EN 61439-3
- IP Rating: IP40

DIMENSIONAL SKETCH:



	CU/M02-U	CU/M03-U	CU/M04-U
HEIGHT	146	225	225
WIDTH	80	97	115
DEPTH	70	70	70

approximate values

