

SAVES UP TO
98% WATER

Drenched Single Volumiser

Product codes

DV01.12 / DV01.25 / DV01.12AV / DV01.25AV
DV01.12-22 / DV01.25-22 / DV01.12-22AV / DV01.25-22AV

The 0.25l/min flow rate volumiser is supplied as standard with the option of a 0.12l/min for shallow sink applications. e.g. disabled toilets.

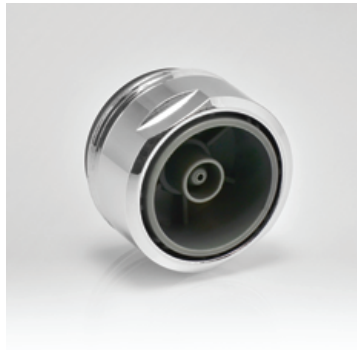
Drenched volumisers can also be supplied in the Anti vandal housings making them perfect for high foot fall areas e.g. Schools, Universities and public buildings, we are also able to supply the volumiser range in six pack blisters with one tool.

Throughout Europe, the standard aerator housing thread size is 24mm male, however in some circumstances a 22mm female, or even a non - threaded tap may exist. Drenched have housings and adaptors that allow the fitting of a volumiser into these variations.

Choose your size carefully from the ACTUAL SIZE photo and description below:



M22 FEMALE THREAD: ACTUAL SIZE

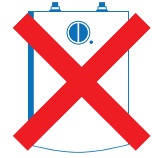


M24 MALE THREAD: ACTUAL SIZE

APPLICATION AREAS



DRINKING
WATER ONLY



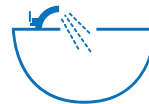
NOT SUITABLE FOR
PRESSURELESS WATER
HEATERS



0.25 SUITABLE FOR
COLD WATER TAPS



SUITABLE FOR A COLD
WATER FLOW ONLY

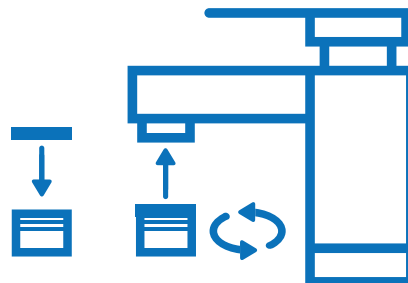


0.12 OPTION
SUITABLE FOR
HANDWASH BASINS
RESTRICTED IN SIZE
(DISABLED BASIN, OR
WHERE A SMALLER
FLOW RATE IS
REQUESTED).

EASY INSTALLATION TO FIT COMMON M22 & M24 HOUSING

1. Remove old aerator from faucet.
Use wrench if necessary.
2. Remove any old washers that
might be caught inside the spout.
3. Clean the threads inside the
spout by hand.
4. Install the new Drenched
Volumiser onto the spout by hand.
5. Turn on Faucet. If leak occurs,
tighten more firmly.

**For female faucets
with inside threads**



OUR VOLUMISER ALSO FEATURES IN



DUAL FLO
(SEE PAGE 05)



SHOWER
(SEE PAGE 07)



SHATTAF
(SEE PAGE 09)



WUDU TAPS
(SEE PAGE 10)

For more information or to place an order,
visit our website www.cef.co.uk