

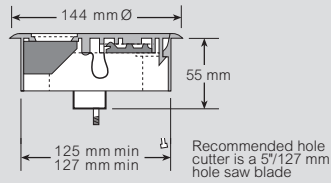
floor grommets

technical information

144 mm Ø plastic floor grommet

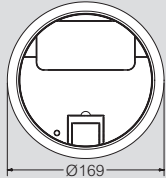
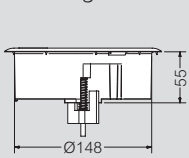
Dimensions

144 mm grommet
EG0010



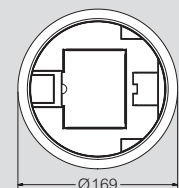
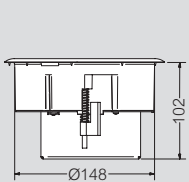
169 mm Ø plastic floor grommets

Access grommet



Cat. No. EG0030

Power grommet

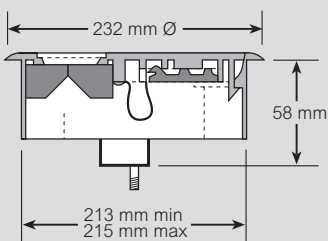


Recommended hole cutter is a 6 1/8"/152 mm hole saw blade

232 mm Ø plastic floor grommet

Dimensions

Large quick fit grommet
Cat. No. EG0055

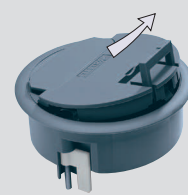


Floor panel cut-out diameter

Recommended hole cutter is a adjustable hole saw blade with Ø range of 40 mm - 300 mm

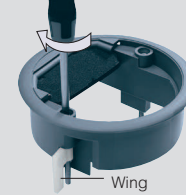
To install plastic floor grommet

A



Lift handle and pull to remove lid

B



Push grommet into raised floor tile aperture
Push down spring loaded screws and rotate quarter turn to secure
Ensure wings are located under floor panel
For honeycombed floor panels one wing should face downwards and one wing should face upwards

C



Drop cable access insert into housing opening

D



Slide lid into lug holes

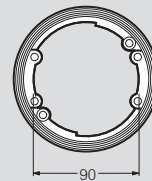
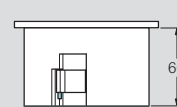
E



(1) Push down lid to close
(2) If grommet is not in use, replace cable access insert

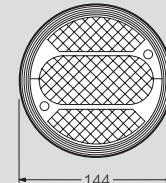
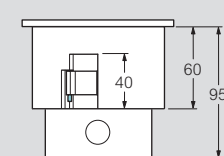
144 mm Ø aluminium grommets

Access grommet



Cat. No. EG0015

13 A power grommet



Cat. No. EG0025

Recommended hole cutter is a 5 1/8"/127 mm hole saw blade