

Keystone Angled Adaptor

25 x 38mm

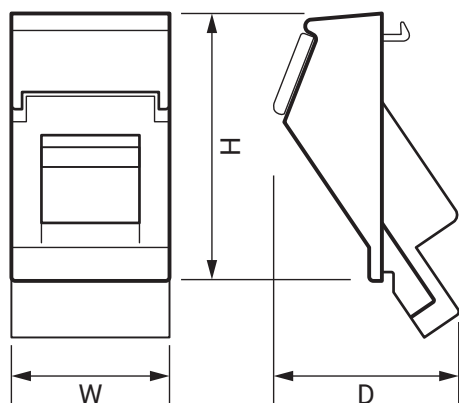
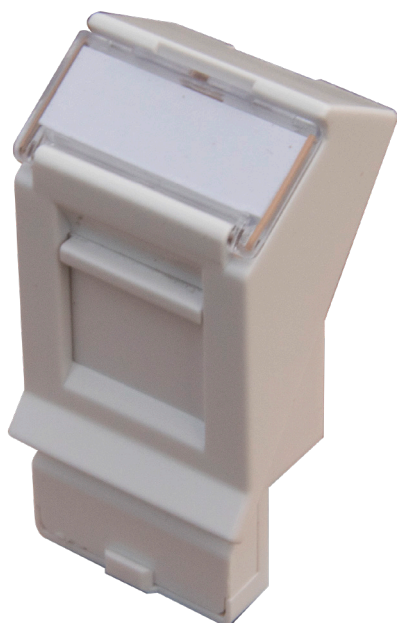
Product Ref: **EM01.208**

Technical Features:

- Angled modules minimize issues with bend radius and are suitable for use with shallow back boxes or larger keystones
- Accommodates most keystone jacks
- Ideal for floor box installation where space is limited
- Sprung shutter
- Supplied with label and protective cover

Product Specification

Colour	White
Compliance	UKCA, CE
Guarantee	1 Year
Material	Plastic
Mounting	Direct into floor plate
Size	25 x 38mm
Supplied With	Label and protective cover
Weight	0.006kg
Depth	27mm
Height	38mm
Width	25mm



Errors and omissions excepted (E&OE). All information is subject to change without notice and is correct at the time of print. Refer to issue number and date below.

Tel: +44 (0)1302 765 570 • info@emitex.co.uk •  EmitexInfo