

# SILENT 100 *Design*



Ultra Quiet WC & Bathroom Fans



AVAILABLE IN

Range of 100mm domestic axial extract fans for wall or ceiling installations, designed to solve ventilation problems in WC's and bathrooms. Fitted with motors mounted on silent elastic blocks, the fans deliver incredibly silent running and exceptional performance with stylish features.

## Features

- Sealed for life ball bearings
- Silent elastic blocks
- IP45 rated\*
- Backdraught shutter and airflow guide vanes as standard
- Standard Thermal Overload Protection (S.T.O.P)
- Available in silver
- Five year guarantee

\*Pullcord version IP44

## Benefits

- Elegant design
- Incredibly silent running
- High performance
- Significant energy savings
- Complies with building regulations

## Optional Features ▼



### Adjustable Timer

After disconnection, the shut off time can be delayed between 1 and 30 minutes.



### Pullcord

Supplied with pullcord override.



### Adjustable Humidity Sensor

The level of humidity for the bathroom can be chosen from between 60% and 90% RH. The extract fan will continue to work long enough to reach the selected level.



### Silver Finish

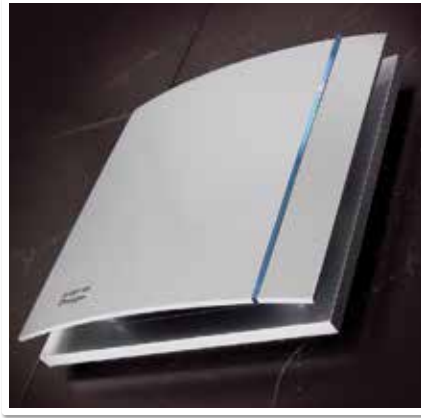
Models which are available with a silver finish.

ORDER CODE	SILDES100S	SILDES100P	SILDES100T	SILDES100HT	SILDES100SS	SILDES100PS	SILDES100TS	SILDES100HTS	SILDES100SK
Neon Light	•	•	•	•	•	•	•	•	•
Sealed For Life Ball Bearings	•	•	•	•	•	•	•	•	•
Silent Elastic Blocks	•	•	•	•	•	•	•	•	•
Backdraught Shutter	•	•	•	•	•	•	•	•	•
Adjustable Timer			•	•			•	•	
Pullcord		•				•			
Adjustable Humidity Sensor				•				•	
White	•	•	•	•					
Swarovski									•
Silver					•	•	•	•	•

\*SILDES100P is IP44 rated

## SILENT technology just got even more appealing

Incorporating patented silent technology, the SILENT 100 Design fan brings style and elegance to any modern bathroom. With whisper-quiet noise levels of only 26.5 dB(A) and an incredibly low power consumption of only 8 Watts, the SILENT 100 Design is the perfect solution for today's energy-efficient demands. Highly versatile, the fan is suitable for wall and ceiling installations and is available with timer and humidity sensor options. The fans are supplied with four coloured interchangeable front panel trims.



# SWAROVSKI

NEW

## SILENT 100 Design

Made with beautiful Swarovski crystals, the new SILENT 100 Design Swarovski is the must-have for any style-conscious designer or specifier.

### Options & Ancillaries

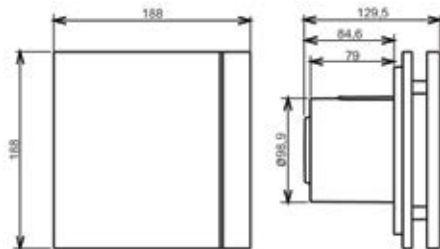
Description	Code(s)
Standard Wall Kit	1RDEFWAK100
Ø100 Flexible Hose Ducting	1RDFLEX100X3M
Fixed Louvre Grille	1RDGRILL100

### Related Information

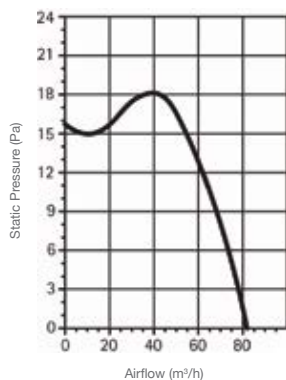
Description	Page Number(s)
SILENT Range Introduction	76-77
Domestic Ancillaries	135-140
Wiring Diagrams	154



### Dimensions (mm)



### Performance Curve



### Technical Specification

#### Product

The SILENT 100 Design is an innovative domestic axial extract fan designed to offer a low level of noise supplied in a 230V format suitable for small rooms and bathrooms. The fan is fitted with a neon light, backdraught shutter and airflow guide vanes as standard. The fans are supplied with four coloured interchangeable front panel trims.

#### Applications

The SILENT 100 Design can be wall or ceiling mounted to meet the Building Regulations - Part F (England), Scottish Building Regulations Section 3 and Part K (Northern Ireland). The fan will ventilate domestic small rooms and bathrooms.

#### Performance

MODEL	SILENT 100 Design
Speed (r.p.m.)	2400
Watts (W)	8
Voltage (V) 50Hz	230
Airflow l/s (m³/h)	22 (80)
dB(A) @ 3m	26.5
Weight (Kg)	0.65
IP Rating	IP45
Ø Duct (mm)	100

#### Installation

Full installation guide is enclosed with all products; or sent separately in advance - if required.

#### Motor

Is a 230V 50Hz or A/C motor, which is assembled on silent elastic blocks and fitted with ball bearings for enhanced working life.

#### Fan

The impeller is axial flow type.

#### Servicing / Maintenance

The extract fan only requires periodical cleaning using a cloth impregnated with a soft detergent.

#### Guarantee

The SILENT 100 Design is covered by a 5 year warranty.

#### Compliance

CE