

**ETHOS**

**TRIED. TESTED. TRUSTED.**

## ELECTRICAL INSTALLATION CONDITION REPORTS

Conforms to the Wiring Regulations

**18th Edition BS 7671:2018 + A2:2022**

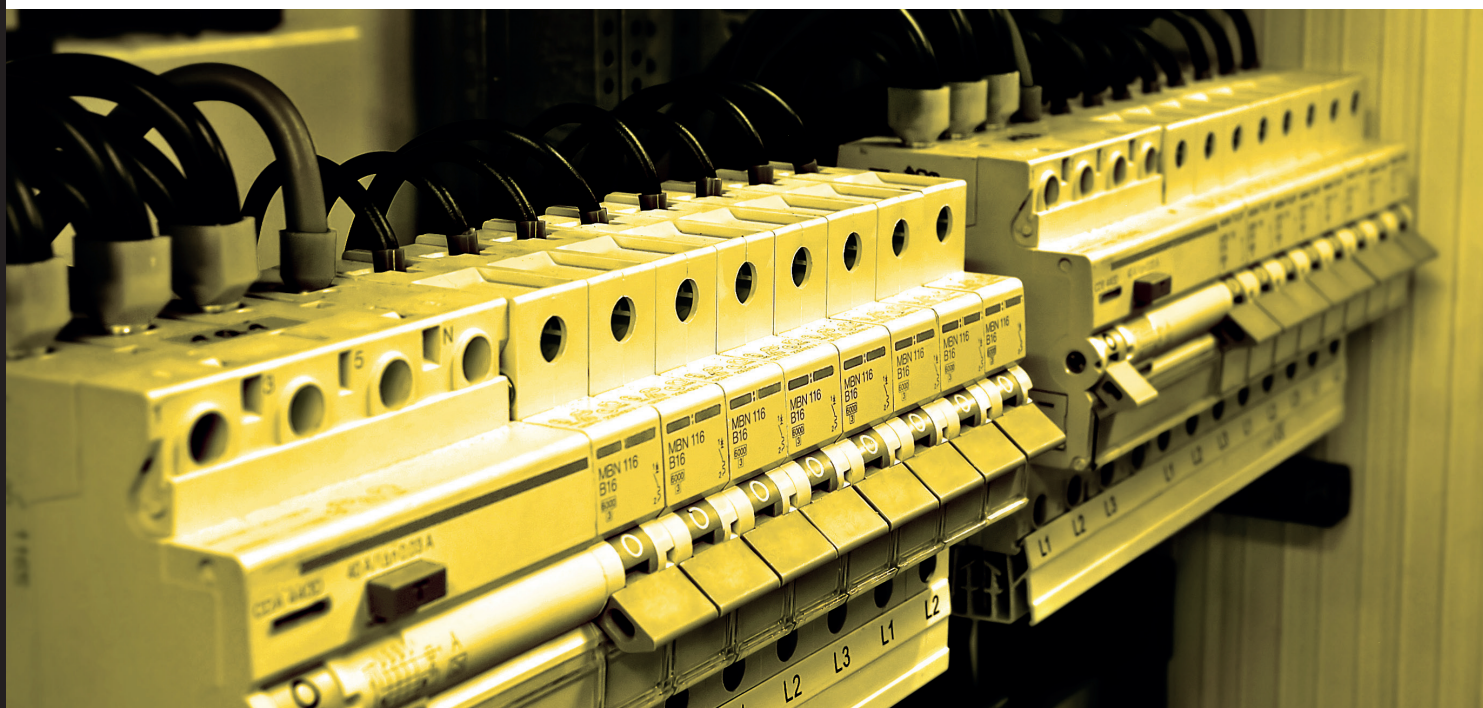
**ETHOS  
7986**

FOR COMMERCIAL AND INDUSTRIAL ELECTRICAL  
INSTALLATIONS

**USE ETHOS 7985 FOR DOMESTIC AND SIMILAR PREMISES (WITH UP TO 100A SUPPLY)**

EACH REPORT MUST BE ACCOMPANIED BY A SCHEDULE OF INSPECTIONS (INCLUDED  
WITHIN THIS PAD) AND ONE OR MORE SCHEDULES OF CIRCUIT DETAILS / TEST RESULTS.

**ETHOS 7982** PROVIDES FOR UP TO 12 WAYS    **ETHOS 7983** PROVIDES FOR UP TO 36 WAYS



5 020669 630696 >

**Distributed by MTi**

Unit 12, Access 18  
Bristol, BS11 8HT

**Tel:** 0117 938 6400

**Fax:** 0117 923 5374

**Email:** [enquiries.ethos@adivision.co.uk](mailto:enquiries.ethos@adivision.co.uk)

**Web:** [www.ethos-instruments.co.uk](http://www.ethos-instruments.co.uk)