

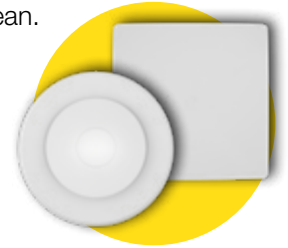


RAPID RESPONSE

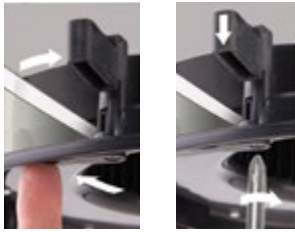
GRILLE TO DUCT CONNECTOR

The easy to install Rapid Response grille to duct connectors are designed to fit our modern 8" or 10" Rapid Response grilles and flexible duct. The grille to duct connectors are suitable for ducted systems that use an in-line, roof, or external wall mounted fan. Grilles are quick to remove, making them easy to clean.

- High strength swing clips make installation easy.
- Can be retrofitted into a standard 8" (255mm) or 10" (290mm) round cut out.
- Designed to fit our range of 8" & 10" Rapid Response grilles.
- Suitable for 150mm ducting.

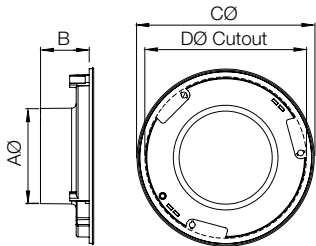


See page 34-35 for full range of Rapid Response grille options.



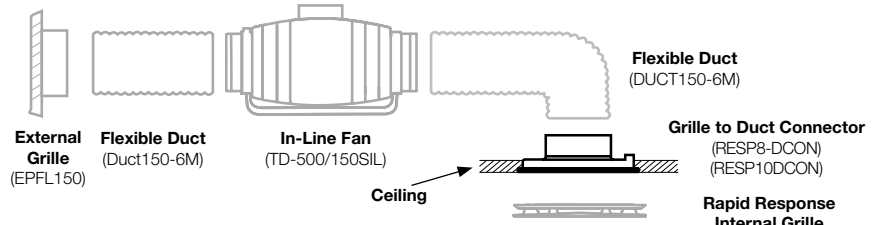
Rotate swing clips to hold grille to duct connector in place.

Tighten screws so clips clamp onto ceiling board.



All dimensions in mm

TYPICAL IN-LINE INSTALLATION

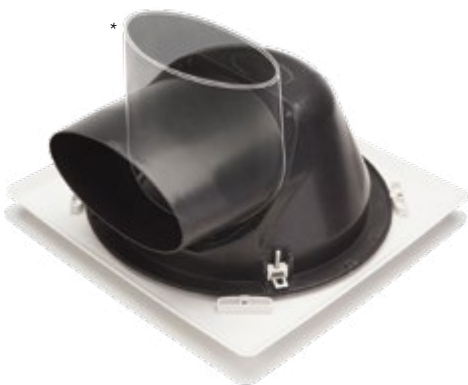


DIMENSIONS

MODEL NO.	DESCRIPTION	AØ	B	CØ	DØ HOLE CUTOUT
RESP8-DCON	Grille to duct connector to suit 8" Rapid Response grilles	145	75	270	255
RESP10DCON	Grille to duct connector to suit 10" Rapid Response grilles	145	75	315	290

Grille to Duct Connector (RESP8-DCON) (RESP10DCON)

Rapid Response Internal Grille (RESP8-SQWH-TRILED) (RESPG150SQWH-TRILED)



* Oval spigot designed to fit 150mm duct. Spigot can be mounted horizontally or vertically.

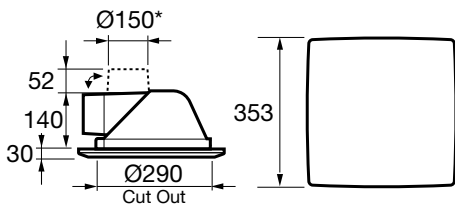
RAPID RESPONSE

CEILING GRILLE WITH CLIP-IN SPIGOT

The Rapid Response ceiling grille with clip-in spigot has been designed for ducted systems using an in-line fan and external grille. It can be positioned for horizontal or vertical duct connection.

- Can be retrofitted into a standard 10" round fan cut out.
- Unique 'push-out' ceiling clamps make installation easy.
- Clip-in spigot makes installation and duct connection easier.
- Grille can be easily removed for cleaning and rotated to align with walls.

DIMENSIONS



All dimensions in mm

Model No. RCG150SQWH