

HSOFR1500TX & HSOFR2000TX & HSOFR2500TX

Installation and Operating Instructions



IMPORTANT SAFEGUARDS

WHEN USING ANY ELECTRICAL APPLIANCE, BASIC SAFETY PRECAUTIONS SHOULD ALWAYS BE FOLLOWED.

PLEASE READ ALL INSTRUCTIONS CAREFULLY AND RETAIN FOR FUTURE REFERENCE

IF IN ANY DOUBT ABOUT THE INSTALLATION OR USE OF THIS PRODUCT, CONSULT A COMPETENT ELECTRICIAN.

 **HEATSTORE**

Safety Warnings

- Before switching on the heater, check that the voltage indicated on the rating plate corresponds to the mains voltage in your home.
- For home use only. Do not use for industrial purposes.
- Do not use the heater outdoors or in a damp area.
- Do not immerse the heater and cord in water or other liquids.
- Never pull the cord while disconnecting plug from the power outlet,
- Do not leave the heater unattended when in operation.
- Do not allow the cord to touch sharp edged or hot surfaces.
- Always unplug the heater when not in operation.
- The heater must only be used in the upright position.
- The surface temperature of the heater can become very hot; please do not touch.
- Young children should be supervised at all times to ensure that they do not play with the heater.
- The heater should be at least 90cm away from walls or other flammable objects such as furniture, curtains, bedding or clothing

Caution

- To avoid a circuit overload, do not operate another high wattage appliance on the same circuit.
- Do not cover the heater when in use

These Oil-Filled column radiators are a great solution for portable heating requirements. Each model comes with a variable thermostat and 24-hour, 96-position timer.

Models covered by these instructions:

HSOFR1500TX – 1.5kW Oil-filled column heater with timer.

HSOFR2000TX – 2.0kW Oil-filled column heater with timer.

Description of parts

- ① Thermostat control
- ② Power setting switch
 - Level "I" power. = low heat
 - Level "II" power. = medium heat
 - Level "III" power = high heat
- ③ Timer
- ④ Oil filled fins
- ⑤ Power cord plate
- ⑥ Castors
- ⑦ Handle

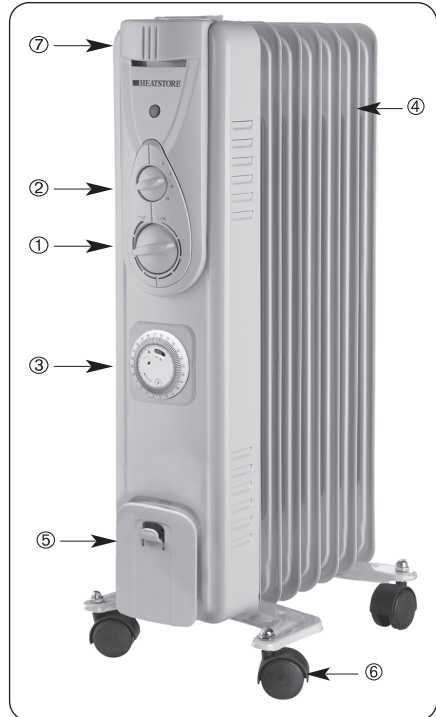
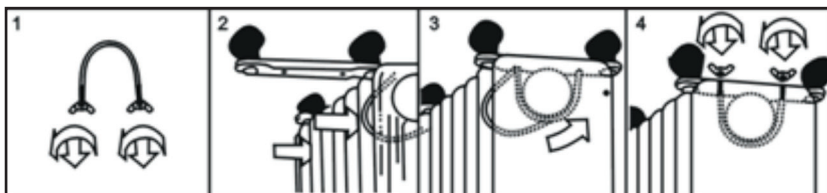


Figure 1

Assembly Instructions

The heater is packaged with the feet unattached. You must attach them before operating the heater.

WARNING: Do not operate without feet attached. Operate the heater only in upright position (feet on the bottom, controls on the top), any other position could create a hazardous situation.



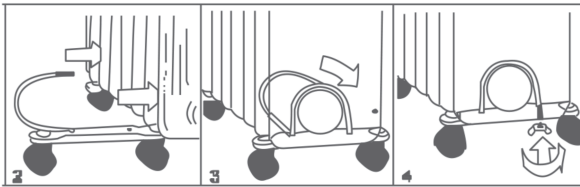
1. Place the radiator body upside-down on a scratch-free location, make sure it is stable and will not fall.
2. Screw off the wing nuts from the U-shaped bolt provided, attach the U-shaped bolt to the U-facing flange between first and second fins (near the front cover).
3. To attach the castor mounting plate to the radiator body, you should insert the threaded ends of the U bolt in the holes on the castor mounting plate.
4. Screw the wing nuts back to the U bolt and fasten the wing nut properly.

Note: do not over tighten, which may cause the damage of radiator flange.

5. Screw off spherical nut from the castor, align the shaft to the hole of the castor mounting plate, insert in, and screw on the spherical nut.

6. Repeat 2, 3, 4 and 5 on the rear of radiator for mounting of the rear castors.

Note: the rear castors must be mounted between the end two fins.



Using the heater

- Set the thermostat to the minimum position and power switch to off; plug the appliance in to the power supply.

Power Selector

- * The heater has three power settings – see *Figure 7* –
 - Level "I" power. = low heat
 - Level "II" power. = medium heat
 - Level "III" power = high heat

- I With power switch "I" pressed, the indicator illuminates. 'ON'
- II With power switch "II" pressed, the indicator illuminates. 'ON'
- III With both power switches "I" and "II" pressed, both indicators illuminate. 'ON'



Figure 7

Thermostat

- Turn the thermostat to maximum position.
- When the temperature rises to a comfortable level, slowly turn thermostat counter-clockwise until the power indicator light just goes out. The room temperature will now be kept constant.
- When the temperature is below the thermostat value, the heating element will switch on and the neon indicator will light (or both indicators if maximum power was set).

To turn off the heater, set the power switch to "0" position. The power indicator light turns off. Unplug the product from the electrical outlet when it is left unattended or is not in use.

Timer operation

This appliance has a built in timer – *Figure 8* – which is operated in the manner shown below.

Each segment is 15 minutes, push a segment in towards the centre to turn the radiator OFF and push a segment outwards to turn the radiator ON. To set the time, prior to programming the ON/OFF setting: rotate the timer clockwise until the arrow marker points to the correct time.



Figure 8

Safety Control (Thermal Cut-Out)

This product has an overheat protection system, which turns the appliance off if it becomes excessively hot. If this should happen to the product ensure that the appliance is turned to the off position "0", unplug it from the mains power supply and allow to cool.

If this problem persists please contact Heatstore.

Safety Control (Tip over switch)

This product has a tip over safety switch which will stop the appliance from working if it is knocked over or installed upside down. The product will only work when it is in an upright position.

Cleaning and maintenance

Cleaning and Care

- The electric heater should be cleaned regularly. To wipe the dust off any dust or dirt that may be present on the fins.
- Unplug the appliance from the power supply and allow to cool.
- Wipe of with a soft damp cloth. Do not use detergent or abrasives.

Storage

- Switch off and unplug the appliance. Ensure that the heater is completely cool.
- Coil Cable.
- Store in a cool dry place.

Contact details	HEATSTORE BS11 8HT, A91, KA9R, IR.				
Model identifier(s): HSOFR1500TX					
Item	Symbol	Value	Unit	Item	Unit
Heat output			Type of heat input, for electric storage local space heaters only (select one)		
Nominal heat output	P_{nom}	1,5	kW	manual heat charge control, with integrated thermostat	No
Minimum heat output (indicative)	P_{min}	0,6	kW	manual heat charge control with room and/or outdoor temperature feedback	No
Maximum continuous heat output	$P_{max,c}$	1,5	kW	electronic heat charge control with room and/or outdoor temperature feedback	No
Power consumption			fan assisted heat output		No
In off mode	P_o	0,245	W	Type of heat output/room temperature control (select one)	
In standby mode	P_{sm}	-	W	single stage heat output and no room temperature control	No
In idle mode	P_{idle}	-	W	Two or more manual stages, no room temperature control	No
In network standby	P_{nom}	-	W	with mechanic thermostat room temperature control	Yes
Standby mode with display of information or status			No	with electronic room temperature control	No
Seasonal space heating energy efficiency in active mode	$\eta_{s,on}$	85,0	%	electronic room temperature control plus day timer	No
				electronic room temperature control plus week timer	No
			Other control options (multiple selections possible)		
				room temperature control, with presence detection	No
				room temperature control, with open window detection	No
				distance control option	No
				adaptive start control	No
				working time limitation	No
				black bulb sensor	No
				Self-learning functionality	No
				Control accuracy	No
Remark: 'This product is only suitable for well insulated spaces or occasional use.' will be showed on the cover page of the user manual, free-access websites of manufacturer, product packaging.					

Contact details	HEATSTORE BS11 8HT, A91, KA9R, IR.				
Model identifier(s):HSOFR2000TX					
Item	Symbol	Value	Unit	Item	Unit
Heat output			Type of heat input, for electric storage local space heaters only (select one)		
Nominal heat output	P_{nom}	2,0	kW	manual heat charge control, with integrated thermostat	No
Minimum heat output (indicative)	P_{min}	0,8	kW	manual heat charge control with room and/or outdoor temperature feedback	No
Maximum continuous heat output	$P_{max,c}$	2,0	kW	electronic heat charge control with room and/or outdoor temperature feedback	No
Power consumption			fan assisted heat output		No
In off mode	P_o	0,245	W	Type of heat output/room temperature control (select one)	
In standby mode	P_{sm}	-	W	single stage heat output and no room temperature control	No
In idle mode	P_{idle}	-	W	Two or more manual stages, no room temperature control	No
In network standby	P_{nom}	-	W	with mechanic thermostat room temperature control	Yes
Standby mode with display of information or status			No	with electronic room temperature control	No
Seasonal space heating energy efficiency in active mode	$\eta_{s,on}$	85,0	%	electronic room temperature control plus day timer	No
				electronic room temperature control plus week timer	No
Other control options (multiple selections possible)					
				room temperature control, with presence detection	No
				room temperature control, with open window detection	No
				distance control option	No
				adaptive start control	No
				working time limitation	No
				black bulb sensor	No
				Self-learning functionality	No
				Control accuracy	No
Remark: 'This product is only suitable for well insulated spaces or occasional use.' will be showed on the cover page of the user manual, free-access websites of manufacturer, product packaging.					

Contact details	HEATSTORE BS11 8HT, A91, KA9R, IR.				
Model identifier(s):HSOFR2500TX					
Item	Symbol	Value	Unit	Item	Unit
Heat output			Type of heat input, for electric storage local space heaters only (select one)		
Nominal heat output	P_{nom}	2,5	kW	manual heat charge control, with integrated thermostat	No
Minimum heat output (indicative)	P_{min}	1,0	kW	manual heat charge control with room and/or outdoor temperature feedback	No
Maximum continuous heat output	$P_{max,c}$	2,5	kW	electronic heat charge control with room and/or outdoor temperature feedback	No
Power consumption			fan assisted heat output		No
In off mode	P_o	0,245	W	Type of heat output/room temperature control (select one)	
In standby mode	P_{sm}	-	W	single stage heat output and no room temperature control	No
In idle mode	P_{idle}	-	W	Two or more manual stages, no room temperature control	No
In network standby	P_{nom}	-	W	with mechanic thermostat room temperature control	Yes
Standby mode with display of information or status			No	with electronic room temperature control	No
Seasonal space heating energy efficiency in active mode	$\eta_{s,on}$	85,0	%	electronic room temperature control plus day timer	No
				electronic room temperature control plus week timer	No
Other control options (multiple selections possible)					
				room temperature control, with presence detection	No
				room temperature control, with open window detection	No
				distance control option	No
				adaptive start control	No
				working time limitation	No
				black bulb sensor	No
				Self-learning functionality	No
				Control accuracy	No
Remark: 'This product is only suitable for well insulated spaces or occasional use.' will be showed on the cover page of the user manual, free-access websites of manufacturer, product packaging.					

SPECIFICATION: HSOFR1500TX

RATING: 230-240V, 1500-1650W, ~50Hz;

DIMENSIONS: 365w x 640h x 245d mm; 7kG

SPECIFICATION: HSOFR2000TX

RATING: 230-240V, 2000-2200W, ~50Hz;

DIMENSIONS: 445w x 640h x 245d mm; 8.5kG

SPECIFICATION: HSOFR2500TX

RATING: 230-240V, 2500-2750W, ~50Hz;

DIMENSIONS: 525w x 640h x 245d mm; 10.0kG



Waste electrical products should not be disposed of with household waste. Please recycle where facilities exist.
Check with your local authority or retailer for recycling advice.

HEATSTORE

Telephone: **0117 923 5375** Fax: **0117 923 5374**

BS11 8HT, A91, KA9R, IR.

www.heatstore.co.uk