

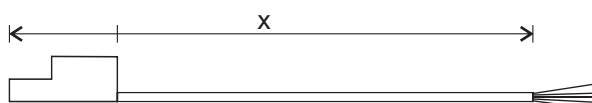
Connect - Lighting control modules and plug-in connection centres

Connection Leads



Luminaire Leads

Luminaire leads are fitted at one end with an industry-standard 6-pin plug for connection to the CD Box. The other end is supplied stripped, ready for connection to the luminaire. Luminaire extension cables are available to provide longer lengths.



Conductor size: 0.75 - 1.0mm²

Plug (male)	Lead	Length (x)	Core	Ex-Or Part No	c/w Ex-Or Locking Mechanism for CDW12U5/CDW10U2UL
GST18/6	LSOH	3m	3-core	CPW633	CPWL633
GST18/6	LSOH	5m	3-core	CPW635	CPWL635
GST18/6	LSOH	3m	4-core	CPW643	CPWL643
GST18/6	LSOH	5m	4-core	CPW645	CPWL645
GST18/6	LSOH	3m	5-core	CPW653	CPWL653
GST18/6	LSOH	5m	5-core	CPW655	CPWL655
GST18/6	LSOH	3m	6-core	CPW663	CPWL663
GST18/6	LSOH	5m	6-core	CPW665	CPWL665

Plug only (male)

GST18/6	N/A	N/A	N/A	CPW6	
---------	-----	-----	-----	------	--

GST18/6 plug with Ex-Or Locking Mechanism for CDW12U5 (or CDW10U2UL luminaire only)

CPWL6

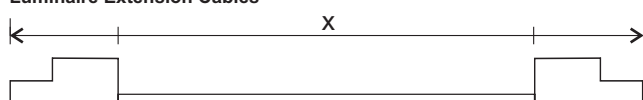
GST18/6 shroud only, for use with CDW12U5

CPWL6S

GST18/7 plug (for detector) with Ex-Or Locking Mechanism for CDW10U2UL

CPWL7

Luminaire Extension Cables



Used in conjunction with luminaire leads to provide longer lengths (i.e. 6m and 8m respectively)

Plug (male)	Lead	Length (x)	Core	Ex-Or Part No	c/w Ex-Or Locking Mechanism for CDW12U5
GST18/6	LSF	3m	6-core	CPW663MF	CPWL663MF
GST18/6	LSF	5m	6-core	CPW665MF	

Plug only (Wieland Part Nos)

GST18/6	34.362.0201.1 (male)		34.361.0201.1 (female)		
---------	----------------------	--	------------------------	--	--

Plug only (Metway Part Nos)

GST18/6	166GST06ASS-003 (male)		166GBU06ASS-002 (female)		
---------	------------------------	--	--------------------------	--	--

Please check www.ex-or.com to ensure this is the most recent issue - Ref: D4034G

Connectors for CDH4U5 & CDH8U5

Part No	Description	Colour	Pieces supplied
CDHDOP	2-way Plug - dimming outputs	Blue	2 pieces
CDHSLOP	2-way Plug - switched live outputs	Black	2 pieces
CDHIP	3-way Plug - SELV switch inputs and auxiliary relay	Green	2 pieces
CDHBUSP	4-way Plug - MLS	Red	1 piece
CDHMIP	3-way Plug - mains input	Black	1 piece

For CDH4U5:

CDH4VFP	3-way Plug - volt-free channels	Black	2 pieces
---------	---------------------------------	-------	----------

For CDH8U5:

CDHHDIP	10-way Plug - SELV switch input	Green	1 piece
CDH8VFP	5-way Plug - volt-free channels	Black	1 piece



Patch Leads (for CDW10U5, CDW12U5, CDH4U5 & CDH8U5)

Using standard RJ-type plugs, these leads are supplied pre-wired and serve as an interface between the CD Box and dedicated detectors or between multiple CD Boxes.



Lead length	Lead	Ex-Or Part No
2m	PVC	BT5E020GY
3m	PVC	BT5E030GY
5m	PVC	BT5E050GY
10m	PVC	BT5E100GY

NOTE

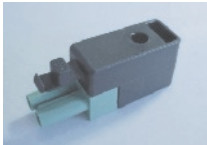
Leads must not be joined. Maximum lead length - 10m.
Use only leads supplied by Ex-Or.
Care must be taken when installing the leads to protect the plug contacts from damage or contamination.



Switch Input Plug

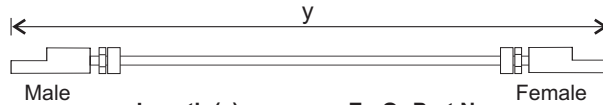
For use with override retractive switch (supplied by others).

Ex-Or Part No: CDWIP - 3-pole (pack of 5 - for CDW12U5)
CTB92084231902 - 4-pole (for CDW10U5)



MLS Bus Connectors (for CDW10U5)

Colour-coded green, these industry-standard 2-pin plugs are supplied wired in either 5m or 10m lengths.



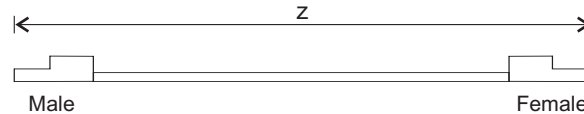
Plug	Lead	Length (y)	Ex-Or Part No
ST17/2 (Green)	Mains-rated 1.5mm ² LSF unscreened twisted pair	5m (with glands) 10m (with glands)	MLS05H6CT15MGFG MLS10H6CT15MGFG
Plug set only ST17/2 (Green)	N/A	N/A	MLSPG



FailSafe Bus Connectors (for CDW10U5)

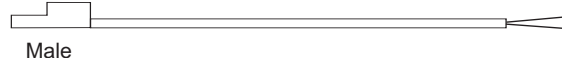
Colour-coded red, these industry-standard 2-pin plugs are supplied wired in either 5m or 10m lengths.

FailSafe Bus Leads



Plug	Lead	Length (z)	Ex-Or Part No
ST17/2 (Red)	Mains-rated 1.5mm ² LSF unscreened twisted pair	5m 5m (with glands) 10m 10m (with glands)	FS05H6CT15MF FS05H6CT15MGFG FS10H6CT15MF FS10H6CT15MGFG
Plug set only ST17/2 (Red)	N/A	N/A	FSPG

FailSafe Luminaire Bus Lead



Plug	Lead	Length	Ex-Or Part No
ST17/2 (Red)	Mains-rated 1.5mm ² LSF unscreened twisted pair	3m	EPW223
Plug only ST17/2 (Red)	N/A	N/A	EPW2