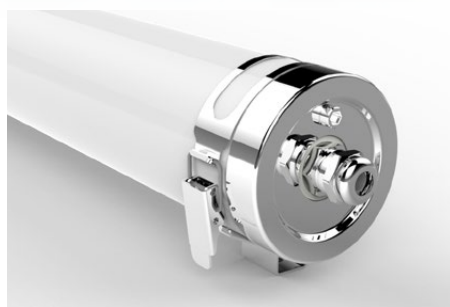


RHINO 69K

SERIES

NON-FLICKER

IQL



**INDUSTRIAL,
FOOD, FARMING &
REFRIGERATION**



TECHNICAL

Body	316 SS, IPC/PMMA Material
Colour Temperature	5000K
Average LED and Control Gear Life	>78,000 hrs (L70/Ta25c)
Beam Angle	120°
Efficacy	140 Lm/w
CRI	> 80
Max Junction Temperature	150C
Cooling	Conduction, Convection
Operating Range Tc	-20°C – 40°C
Thermal Management	Aluminium Heatsink

ELECTRICAL

Power Supply	Non-Flicker LED Driver
Protection	Over Voltage, Short Circuit and Over Temperature
Power Factor	> 0.96
Total Harmonic Distortion (THD)	<15%
Ingress Protection Rating:	IP69K (IP67)
Impact Rating	IK10
Certification	RCM

ORDER CODES

Model	Wattage	Light Colour	Lumens	Weight	A	B
RWP69K-600	20 watts	5,000K	2,800Lm	1.9kg	600mm	70mm
RWP69K-1200	36 watts	5,000K	5,600Lm	3.3kg	1200mm	70mm

KEY FEATURES

- Quality Mitsubishi PC Lens
- SS304 Cable Gland and Respirator Valve
- Vibration Proof WAGO connectors
- Suitable for harsh environments



IP69K

RHINO 69K

Technical Data sheets available on request. Model appearance may vary. | September 2024 specifications are subject to change without prior notice.