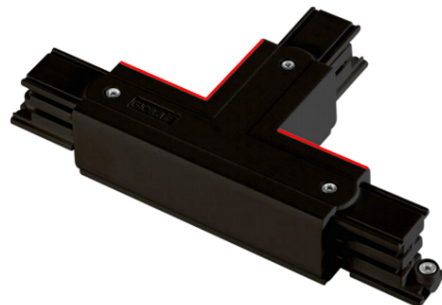


Range Name:	3-Circuit 230V
Product Type:	Track Systems
Description:	T' Connector-Black-(Suitable for incoming mains)
Product Code:	TS37-BL

Body Colour:	Black
Mounting:	-
Track Adaptor:	-
Pendant Stem Length(mm):	-
Environment:	Interior
Size(mm)	66 x 100
Cut Out(mm):	-
Recessed Depth(mm):	-
Vertical Tilt(°):	-
Horizontal Rotation(°):	-
Light Source:	-
Lamp Type:	-
Lamp Included:	-
Lamp Base:	-
Lamp Life(Hours):	-
Lumen Output(lm):	-
Colour Temperature(k):	- -
CRI(Ra):	-
Beam Angle(°):	-
Lense:	-
Voltage(V):	230V
Total System Power(W):	-
Lamp Current(A):	-
Power Factor:	-
Luminaire Efficacy(lm/W):	-
Class:	Class 1
Gear:	-
EAN Code:	5030785028734
Dimmability:	-
Emergency:	-
IP Rating:	IP20
Weight(kg):	0.15kg
Housing Material:	Plastic
Material Finish:	Natural
Guarantee:	5 Year Guarantee



Images, line drawings and measurements illustrated may, in some cases be approximate and for guidance only. Colour finishes will be maintained as accurately as possible but matching cannot be guaranteed.
 Illumina Lighting are continually developing and improving its products. Technical specifications subject to change without prior notice.
 For full terms and conditions visit: <https://www.illumina.co.uk/terms.htm>