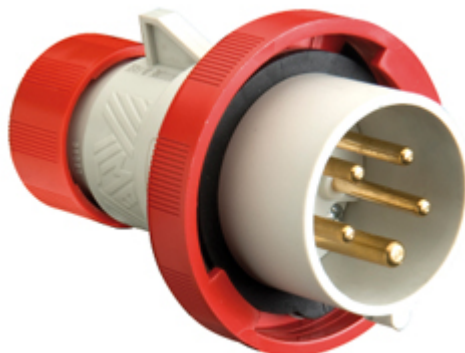



Part number

# PESW 1665 SV



mobile plug, PLUSO series, SQUICH® quick connection, 3 poles + N + PE, 6 h (red), 16 A, 380 ÷ 415 V, straight

## Product description

<b>Product type</b>	plug mobile
<b>Series</b>	PESW...SV, PLUSO
<b>Connection type</b>	SQUICH® quick connection
<b>N. of poles</b>	3 poles + N + 
<b>Clock position</b>	6
<b>Specification</b>	straight

## Technical data

<b>Current</b>	16 A
<b>Voltage</b>	380 ÷ 415 V
<b>IP degree of protection</b>	IP66/IP67

## Further technical details

<b>Weight</b>	206,00 g
<b>Operating temperature range (min, max)</b>	-40°C ... +125°C

## Approvals / Standards

<b>Reference standard</b>	EN 60309-1 and -2
---------------------------	-------------------

## General ordering information

<b>EAN13 code</b>	8015747187268
-------------------	---------------

## Packaging Information

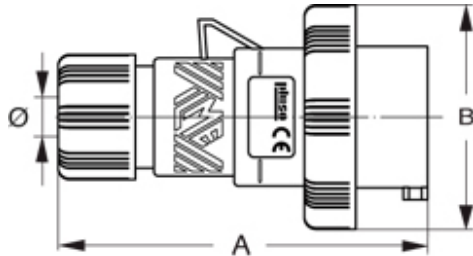
<b>Packaging length</b>	330,00 mm
<b>Packaging height</b>	170,00 mm
<b>Packaging width</b>	352,00 mm
<b>Packaging weight</b>	4,06 kg
<b>Packaging volume</b>	19,75 dm <sup>3</sup>
<b>Packaging description</b>	Carton box
<b>Packaging quantity</b>	20 Pcs
<b>Packaging EAN code</b>	8015747187299

Part number

# PESW 1665 SV



## Catalogue drawings



## Notes

Dimensions shown in mm are not binding and may be changed without notice.

- Compliant with EN 60309-1 and -2
- Enclosure, insert and locking ring in insulating, thermoplastic, self-extinguishing material
- PES...SV types (IP44), entry with cable gland colour coded according to the operating voltage, RAL 7035 grey enclosure
- PESW...SV types (IP66/IP67), entry with cable gland colour coded according to the operating voltage, RAL 7035 grey enclosure, locking ring with gasket colour coded according to operating voltage
- Terminals with retained screws
- IP44 and IP66/IP67 degrees of protection (EN 60529)

### Connection

