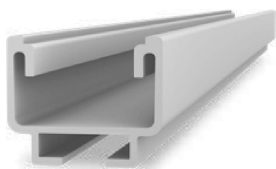


# SolidRail System

## Mounting rail K2 SolidRail UltraLight 32

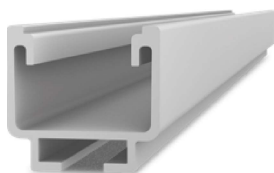


Article number		Sales Unit	Packing Unit	
2003227	Length 2.25 m	1	100	
2003228	Length 3.30 m	1	100	
2003229	Length 4.40 m	1	100	
2003230	Length 5.50 m	1	100	

Mounting rail with static confirmation in K2 Base. Can be used variably for different roof connections.

Material: Aluminium EN AW-6063 T66

## Mounting rail K2 SolidRail Light 37



Article number		Sales Unit	Packing Unit	
2003231	Length 2.25 m	1	100	
2003232	Length 3.30 m	1	100	
2003233	Length 4.40 m	1	100	
2003234	Length 5.50 m	1	100	

Mounting rail with static confirmation in K2 Base. Can be used variably for different roof connections.

Material: Aluminium EN AW-6063 T66

## Mounting rail K2 SolidRail Medium 42



Article number		Sales Unit	Packing Unit	
2003235	Length 4.40 m	1	60	

Mounting rail with static confirmation in K2 Base. Can be used variably for different roof connections.

Material: Aluminium EN AW-6063 T66

## Mounting rail K2 SolidRail Alpin 60



Article number		Sales Unit	Packing Unit	
2003237	Length 5.50 m	1	40	

Mounting rail with static confirmation in K2 Base. Can be used variably for different roof connections. For high span width.

Material: Aluminium EN AW-6063 T66