



Product Code:
6130-050BL

Product Range:
Decorative, Switch Modules, Wiring Accessories

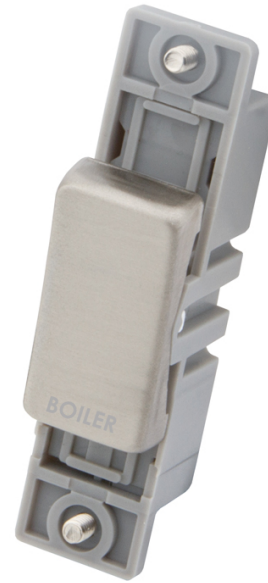
Issue Date:
10/03/2026

Description:

10A DP Switch Module Printed Boiler Brushed Stainless Steel

Features:

- 10AX Rated
- Double pole switch
- Engraved: Boiler
- For use with M2 Aperture plates



Technical:

Height	65 mm
Width	16 mm
Depth	25 mm
Weight	0.01 Kg
Current rating	10A
Compliance	CE Compliant 93/68/EEC
Finish	Brushed Stainless Steel
Frequency	50/60 Hz
Guarantee	25 Years
Mounting	Modular
Neon	No
Number of modules	1
Number of poles	Double Pole
Packaging type	Each
Pack quantity	1
Standards	BS EN 60669-1:2018
Voltage rating	230 V
Product range	Switches
Legend	Boiler