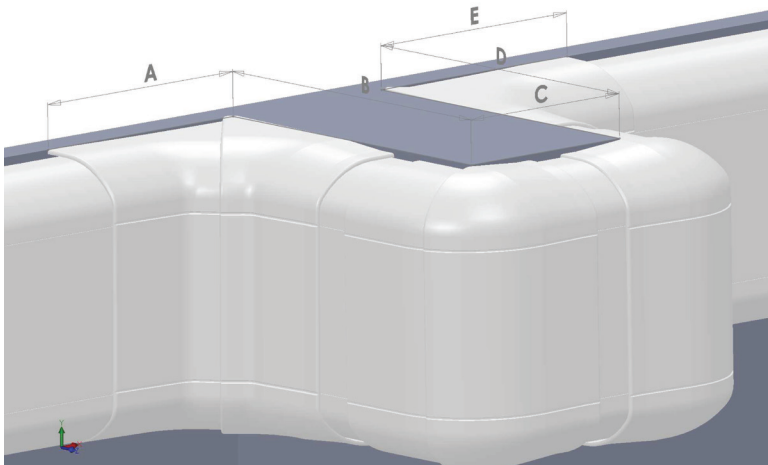
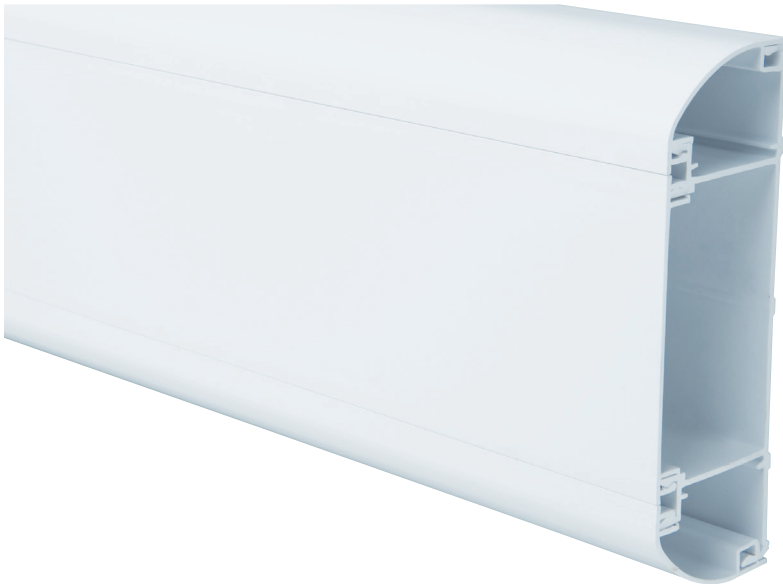




## elite compact trunking

### key features



- 145mm x 50mm profile
- Aesthetically-pleasing curved design
- Manufactured from high impact resistant uPVC compound
- Suitable for Dado or Skirting mounting either vertically or horizontally
- Pre-punched base
- Large pre-punched knockouts located on both internal walls
- Full range of fittings and accessories
- Attractive two piece adjustable Internal and External covers to accommodate walls that are not a true 90 degree
- Internal and External Angles maintain necessary bend radius to comply with British, European and International standards, including CAT5E, CAT6, Shielded, CAT7 and the new CAT6A 10 gig solution
- Moulded Flat Tee and Flat Angle with data guide to maintain necessary bend radius and cable segregation
- Moulded Flat Tee and Flat Angle overlap Trunking to prevent need of additional Joint Covers
- Screw-fit fittings available (optional)
- 1 and 2 Gang open sided frames
- Pre-punched Steel Screen Divider (BS EN 50174-2)
- DDA Compliancy obtainable
- ROHS Compliant
- ELITE Compact Hygiene range available – anti-microbial protection
- Available as pre-assembled units