

Fittings



MMT2 adaptor		
code	size	pack
DD1740WH	MMT2	1



Round conduit adaptor		
code	size	pack
DD1720WH	20mm	1
DD1725WH	25mm	1

Boxes



*RCD housing		
code		pack
DD1580MWH		1

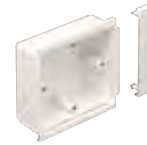
*Up to 4 modules can be accommodated
Note: RCDs are not supplied by Marshall-Tufflex



1 gang accessory box		
code	depth	pack
DD1510WH	30mm	20



2 gang accessory box		
code	depth	pack
DD1520WH	30mm	10



*1 gang adjustable depth box		
code	depth	pack
*DD1540WH	32 – 40mm	10

DD1540 is fully adjustable to 47mm. Please see page 311 for more information.



*2 gang adjustable depth box		
code	depth	pack
*DD1550WH	32 – 40mm	10

DD1550 is fully adjustable to 47mm. Please see page 311 for more information.



*Accessory box adaptor		
code		pack
DD1590WH		1 pair

Each pack contains 2 adaptors



1 gang data mounting frame		
code		pack
DD1560WH		20



2 gang data mounting frame		
code		pack
DD1570WH		10

***Box adaptors**

When installing adjustable boxes DD1540 and DD1550, a DD1590 adaptor should be used at either end of the box.

Where two or more adjustable boxes are being used in line, the spacer included is for use between boxes and a DD1590 adaptor is used at either end.

Part M

For boxes that meet the requirements of Part M (DDA) please refer to page 106.

Bio

Odyssey Bio



Odyssey is available as part of our standard range with Bio antimicrobial protection within the PVC-U material.

Odyssey Bio trunking component chart



Odyssey trunking
180 x 57mm

Trunking assembly	End cap (1 piece)	Coupler (1 piece)	Internal bend (1 piece)	Internal adjustable bend	External bend (1 piece)	External adjustable bend	Flat angles (up or down)	Flat tees (up or down)	1 gang Bio data mounting frame	2 gang Bio data mounting frame
DD1B Pack 1 x 3m	DD1233 Pack 2	DD1213 Pack 1	DD1313 Pack 1	DD1333 Pack 1	DD1353 Pack 1	DD1373 Pack 1	DD1413 Pack 1	DD1433 Pack 1	DD1561 Pack 1	DD1571 Pack 1

p274

Technical Information