

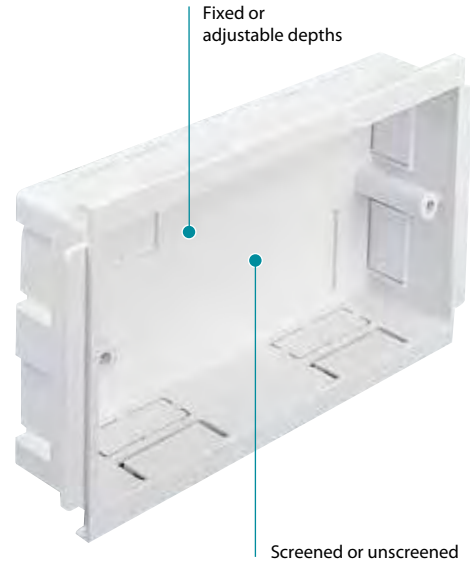
A range of standard and screened options, including adjustable depth boxes that are particularly suitable for data or 4mm² power cable.

Product information

- Accept standard UK accessories
- Standard screw fixing centres
- Adjustable depth
- Part M compliance (see page 106)

Standard colour
WH
WH: White

Colour options: optional colours and finishes are available but these may be subject to minimum quantity orders and longer lead times. For more information contact the Technical Team on +44 (0)1424 856688.



Boxes for UK accessories



1 gang accessory box

code	depth	pack
ESSB1WH	30mm	20



2 gang accessory box

code	depth	pack
ESSB2WH	30mm	10

Part M

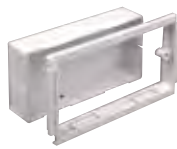
For boxes that meet the requirements of Part M (DDA) please refer to page 106 of this section.



1 gang adjustable depth box

code	depth	pack
EAB1WH	32 – 47mm	10

EAB1 and EAB2 are fully adjustable to 47mm. Please see page 311 for more information.



2 gang adjustable depth box

code	depth	pack
EAB2WH	32 – 47mm	5



1 gang accessory box *Screened

code	depth	pack
ESSB1SWH*	30mm	20

*Screened boxes supplied complete with earth terminal



2 gang accessory box *Screened

code	depth	pack
ESSB2SWH*	30mm	10

*Screened boxes supplied complete with earth terminal



1 gang accessory plate

code	pack
ESSP1WH	10



2 gang accessory plate

code	pack
ESSP2WH	5

p311
Technical Information

POWER, VOICE AND DATA ACCESSORIES FOR TRUNKING