

Twin Plus is a large, segregated, two-compartment skirting and dado trunking system that provides high capacity cable containment for most commercial environments.



'Bio option' available to special order



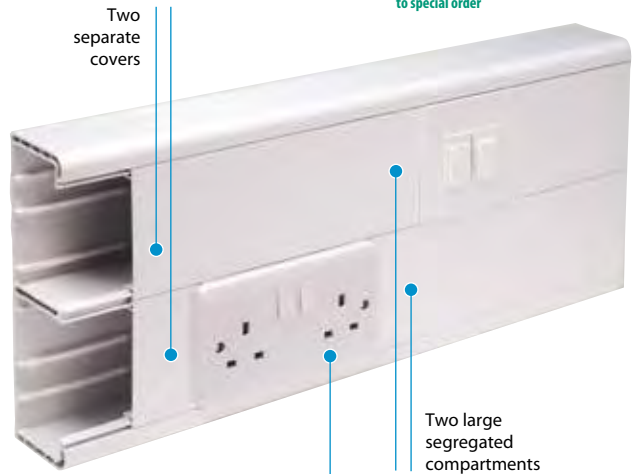
Product information

- 210 x 57mm
- 2 large segregated compartments
- Can be subdivided
- Separate cover access to each compartment
- Suitable for skirting and dado application

Data information

- 50mm bend radius fittings
- Adjustable data box 32-47mm
- Screened divider and data boxes

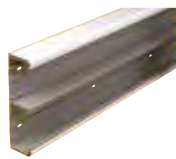
| |
|-----------------|
| Standard colour |
| WH |
| WH: White |



Part M

For boxes that meet the requirements of Part M (DDA) please refer to page 106 of this section.

Basic components



Base unit

| | |
|---------|--------|
| code | pack |
| EMT60WH | 2 x 3m |

Cover

| | |
|--------|--------|
| code | pack |
| ETL1WH | 8 x 3m |

Fittings



Coupler

| | |
|--------|------|
| code | pack |
| EC60WH | 1 |

End cap

| | |
|---------|------|
| code | pack |
| EEC60WH | 1 |

For additional retention use end cap retaining screws G1310 (Pack 40)

Note: 135° versions are also available. For more information call the Technical Team on +44 (0)1424 856688



Internal bend assembly

| | |
|---------|------|
| code | pack |
| EIB60WH | 1 |

External bend assembly

| | |
|----------|------|
| code | pack |
| ESXB60WH | 1 |

Capacity reduced by 50%

External bend assembly

| | |
|---------|------|
| code | pack |
| EXB60WH | 1 |

p284

Technical Information