

11 Way Domestic Copper Busbar Pin Type with Plastic Covers - 240V

Product Ref: **11WBB**

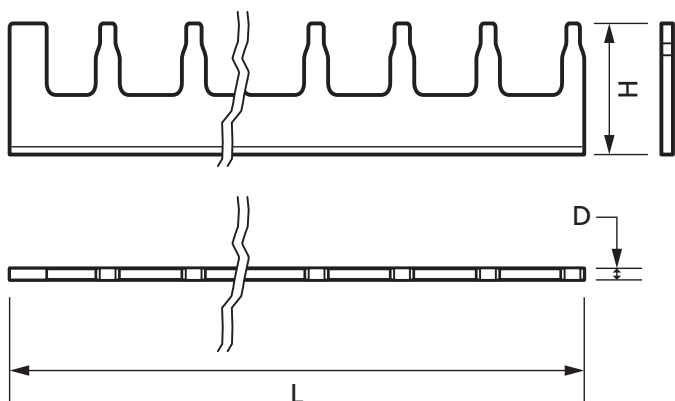
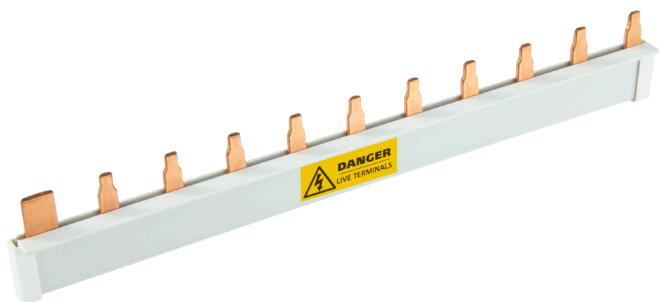
Technical Features:

- Designed to be used with the MCG Industrial range of MCBs and Consumer Units
- Pin style connection

Product Specification

| | |
|-----------------|-------------|
| Voltage Rating | 240V |
| Current Rating | 100A |
| Weight | 0.071kg |
| Number of Poles | Single Pole |
| Number of ways | 11 |
| Insulated | Yes |
| Colour | Copper |
| Finish | Smooth |
| Material | Copper |
| Compliance | UKCA, CE |
| Guarantee | 1 Year |
| Standards | IEC 60898 |
| Depth | 2mm |
| Height | 28mm |
| Length | 186mm |

Dimensions shown are for the Busbar only - not the plastic cover



Errors and omissions excepted (E&OE). All information is subject to change without notice and is correct at the time of print. Refer to issue number and date below.

Tel: +44 (0)1302 342 642 • mcg.co.uk • [@mcg_industrial](https://twitter.com/mcg_industrial)