

19 Way Domestic Copper Busbar Pin Type with Plastic Covers - 240V

Product Ref: **19WBB**

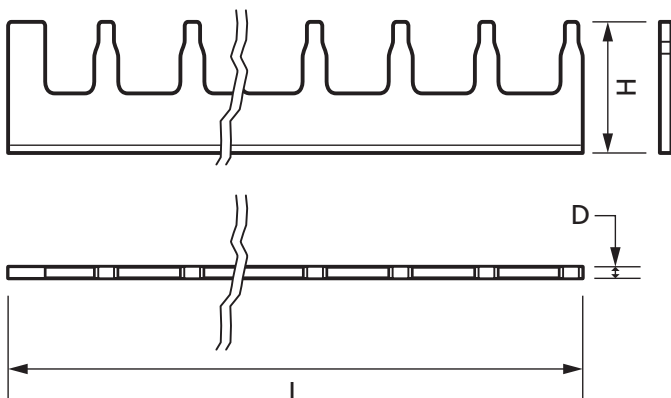
Technical Features:

- Designed to be used with the MCG Industrial range of MCBs and Consumer Units
- Pin style connection

Product Specification

Voltage Rating	240V
Current Rating	100A
Weight	0.117kg
Number of Poles	Single Pole
Number of ways	19
Insulated	Yes
Colour	Copper
Finish	Smooth
Material	Copper
Compliance	UKCA, CE
Guarantee	1 Year
Standards	IEC 60898
Depth	2mm
Height	28mm
Length	330mm

Dimensions shown are for the Busbar only - not the plastic cover



Errors and omissions excepted (E&OE). All information is subject to change without notice and is correct at the time of print. Refer to issue number and date below.

Tel: +44 (0)1302 342 642 • mcg.co.uk • [@mcg_industrial](https://twitter.com/mcg_industrial)