

Push Button Operated MCB Lockout Pin Out

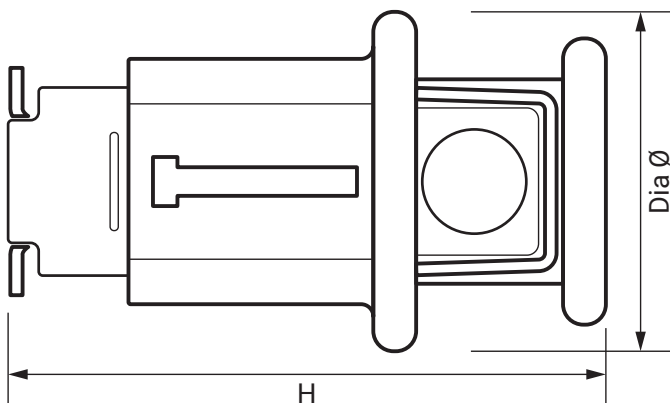
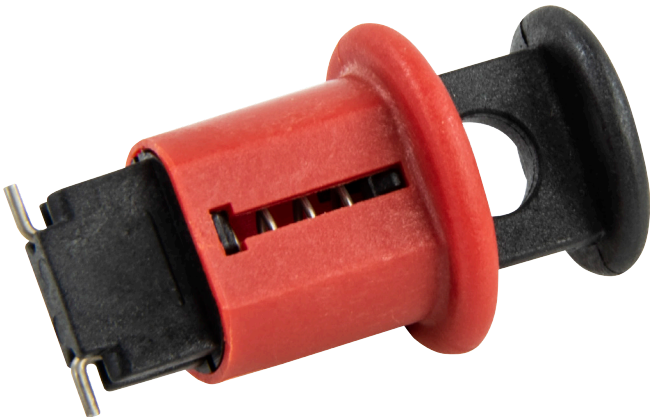
Product Ref: **CB05**

Technical Features:

- Padlockable circuit breaker lockout
- Designed to fit most modern single and multiple pole miniature circuit breakers
- Manufactured from strong nylon
- Allows breakers to be locked off individually
- Push button operated
- Fits most popular breakers up to 60A
- Will also fit breakers connected with a cross bar

Product Specification

Lockout Type	Pin Out
Weight	0.007kg
Colour	Red/Black
Material	Nylon
Compliance	UKCA, CE
Guarantee	1 Year
Suitable for	Fits most popular breakers up to 60A
Diameter Ø	24mm
Height	41mm



Errors and omissions excepted (E&OE). All information is subject to change without notice and is correct at the time of print. Refer to issue number and date below.

Tel: +44 (0)1302 342 642 • mcg.co.uk • ✉@mcg_industrial