

## Push Button Operated MCB Lockout Pin In

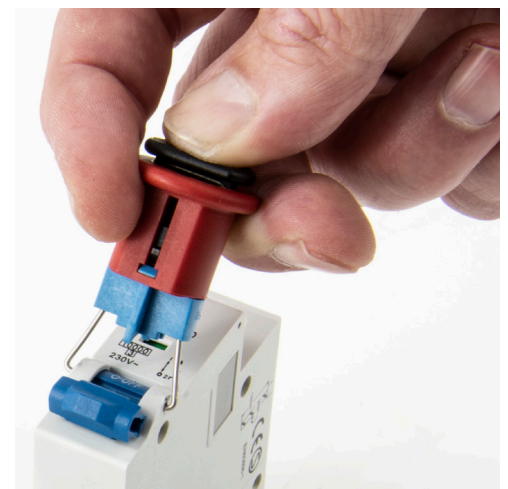
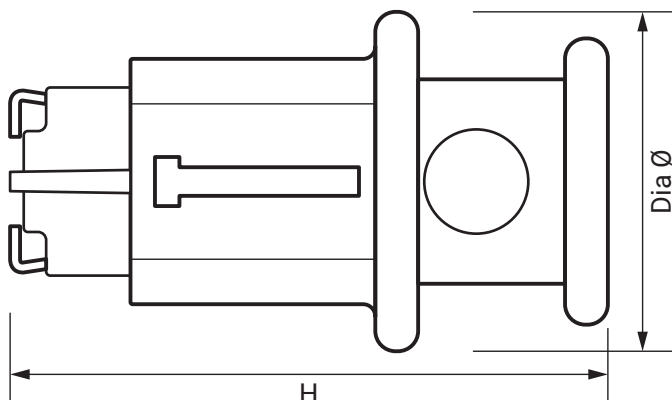
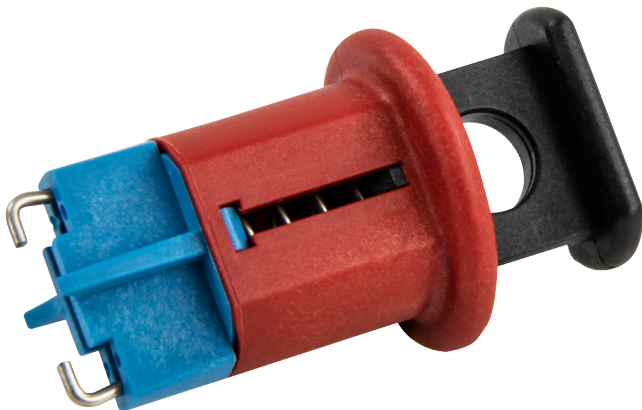
Product Ref: **CB06**

### Technical Features:

- Padlockable circuit breaker lockout
- Designed to fit most modern single and multiple pole miniature circuit breakers
- Manufactured from strong nylon
- Allows breakers to be locked off individually
- Push button operated
- Fits most popular breakers up to 60A
- Will also fit breakers connected with a cross bar

## Product Specification

|              |                                      |
|--------------|--------------------------------------|
| Lockout Type | Pin In                               |
| Weight       | 0.008kg                              |
| Colour       | Red/Black/Blue                       |
| Material     | Nylon                                |
| Compliance   | UKCA, CE                             |
| Guarantee    | 1 Year                               |
| Suitable for | Fits most popular breakers up to 60A |
| Diameter Ø   | 24mm                                 |
| Height       | 41mm                                 |



Errors and omissions excepted (E&OE). All information is subject to change without notice and is correct at the time of print. Refer to issue number and date below.

Tel: +44 (0)1302 342 642 • [mcg.co.uk](http://mcg.co.uk) • [✉@mcg\\_industrial](mailto:✉@mcg_industrial)