



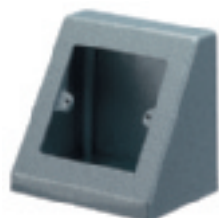
Bench Trunking units

Ref	Type	Packed
CVBU1W	1 gang 100 x 100 x 140mm	1
CVBU2W	2 gang 100 x 100 x 200mm	1
CVBU3W	1 and 2 gang 100 x 100 x 304mm	1

Colour/Finish: Satin anodised aluminium. Lids/end caps = white.

Attractive satin anodised profile/finish.

Accepts all standard BS wiring accessories.



Bench single sided units

Ref	Description	Colour	Packed
BUS11G	Accepts 1 x single accessory	G	1
BUS11	Accepts 1 x single accessory	U	1
BUS12G	Accepts 1 x twin accessory	G	1
BUS12	Accepts 1 x twin accessory	U	1
BUS21G	Accepts 2 x single accessory	G	1



Bench double sided units

Ref	Description	Colour	Packed
BUD11G	Accepts 1 x single accessory per side	G	1
BUD11	Accepts 1 x single accessory per side	U	1
BUD12G	Accepts 1 x twin accessory per side	G	1
BUD12	Accepts 1 x twin accessory per side	U	1

Colour/Finish: G = Hammer grey or U = uncoated. Other colour options available on special request.

Material: Fabricated steel and cast aluminium.



Pre-wired with neon indicator

Ref	Description	No. of sockets	Packed
B1002S	249 x 102 x 108mm	2	1
B1004S	434 x 102 x 108mm	4	1
B1006S	619 x 102 x 108mm	6	1
B1008S	804 x 102 x 108mm	8	1

Pre-wired with illuminated main switch

Ref	Description	No. of sockets	Packed
B2002S	249 x 102 x 108mm	2	1
B2004S	434 x 102 x 108mm	4	1
B2006S	619 x 102 x 108mm	6	1
B2008S	804 x 102 x 108mm	8	1

Pre-wired with 25A 30mA RCD protection

Ref	Description	No. of sockets	Packed
B3002S	377 x 102 x 108mm	2	1
B3004S	562 x 102 x 108mm	4	1
B3006S	747 x 102 x 108mm	6	1
B3008S	932 x 102 x 108mm	8	1