



A range of power distribution units designed and manufactured specially for office furniture and office screens.

Technical data

- Allows compliance to BS 6396*
- Standard or custom made options
- Integral 3.15A surge fuses fitted as standard
- Wieland style connector system to enable interconnection of modules
- Double insulation for use on unearthed furniture
- External earth leads for use on earthed furniture
- Surface or flush-mounting facility

* BS 6396 – Electrical Systems in office furniture and office screens.

This standard covers the design, installation and testing of both office furniture and power distribution equipment which serves it. The use of the Mita range's Desk Power Modules may allow compliance with BS6396 but installers should satisfy themselves that all other conditions are met.

BS6396* PM Series Desk Power Modules



PM4MS4X6C

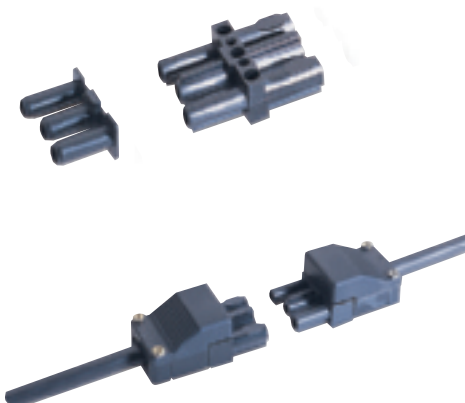
Power distribution units		
Ref	Description	Packed
PM2SH	2 way switched - H	1
PM3V	3 way - V	1
PM3VMS	3 way with mains switch - V	1
PM4V	4 way 2V, 2H	1
PM4VMS	4 way with mains switch - V	1
PM4MS4X6C	4 way with mains switch and 4x6C data cutouts, complete with blank modules	1
PM6VMS	6 way with mains switch - V	1

Note: Other configurations available on request.
Image shows data outlets, these will be supplied as blanks.



Power leads		
Ref	Description	Packed
PMPL2	2m power lead	1
PMPL3	3m power lead	1
PMPL4	4m power lead	1
PMPL5	5m power lead	1
PMPL6	6m power lead	1
PMPL7	7m power lead	1
PMCL05	0.5m connector lead	1
PMCL1	1m connector lead	1
PMCL15	1.5m connector lead	1
PMCL2	2m connector lead	1

Note: Other lengths available on request.



Accessories		
Ref	Description	Packed
PMCM	Self fit connector - male	1
PMCF	Self fit connector - female	1
PMCB	Connector block	1
PMBP	Spare blanking plug	1
PMMSBX	Mains splitter	1

Spares		
Ref	Description	Packed
SFU3	Spare 3.15A surge fuse	10
SFU5	Spare 5A surge fuse	10