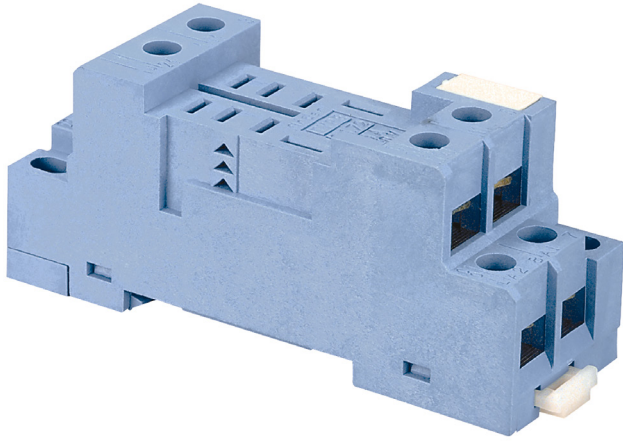


9602

Finder 90 Series Base for 5632 Relays and 9902 LED Box Clamp with Metal Clip



Component type	Relay socket
Range	Panel Mount and Power Relay
Model	N/A
Product status	Existing



The Finder General Purpose Panel Mount and Power Relays are a reliable and efficient switching solution for various applications and industries. Options include coil voltages, output current ratings, contact configurations. A modular design allows for surge suppressors, coil indication and timers. Features manual override, push-to-test, slots for markers, jumpers and gold plated contacts.

ELECTRICAL	Type of electric connection	Screw connection
CONSTRUCTION	Mounting method	DIN rail (top hat rail) 35 mm
	Number of pins	8.0
	Function extension possible	Yes
MECHANICAL	With detachable clamps	No
DIMENSIONS	Width	27.0 mm
	Height	82.5 mm
	Depth	67.2 mm

9602

Finder 90 Series Base for 5632 Relays and 9902 LED Box Clamp with Metal Clip



DIMENSIONAL DIAGRAM

