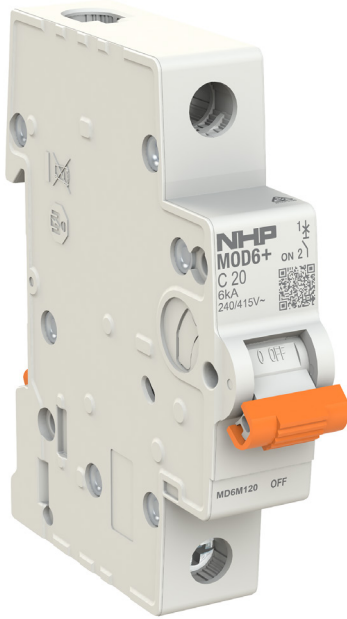


# MD6M125

NHP MOD6+ Miniature Circuit Breaker MCB 6kA 1 Pole 25A C Curve



<b>Component type</b>	Miniature circuit breaker (MCB)
<b>Range</b>	MOD6+ Miniature Circuit Breakers
<b>Model</b>	N/A
<b>Product status</b>	New Item

NHP's MOD6+ Miniature Circuit Breakers (MCBs) offer cost effective solutions while providing core electrical protection, designed to detect and trip on overload and short circuit currents. These MCBs are available with a 6kA short circuit rating, with current ratings from 6-63A in 1P, 2P or 3P in C trip curve and 80-125A in 1P & 3P in C trip curve.

## ELECTRICAL

Rated current	25 A
Number of poles (total)	1
Trip curve	C
Rated voltage	240 V
Frequency	50-60 Hz
Voltage type	AC
Service voltage $U_b$ , AC	12 V
Rated short-circuit breaking capacity $I_{cn}$ according to AS/NZS 60898 at 230 VAC	6 kA
Rated short-circuit breaking capacity $I_{cn}$ according to AS/NZS 60898 at 400 VAC	6 kA
Max. rated operation voltage $U_e$	440 V
Rated insulation voltage $U_i$	440 V
Rated impulse withstand voltage $U_{imp}$	4 kV

## CONSTRUCTION

Additional equipment possible	No
Number of protected poles	1
IP rating	IP40

## MECHANICAL

Connectable conductor cross section solid-core	0.75-25 mm <sup>2</sup>
Connectable conductor cross section multi-wired	0.75-16 mm <sup>2</sup>

## DIMENSIONS

Height	85 mm
Width	17.5 mm
Depth	75.8 mm
Width in number of modular spacings	1
Weight	0.12 kg

## ENVIRONMENT

Pollution degree	3
------------------	---

# MD6M125

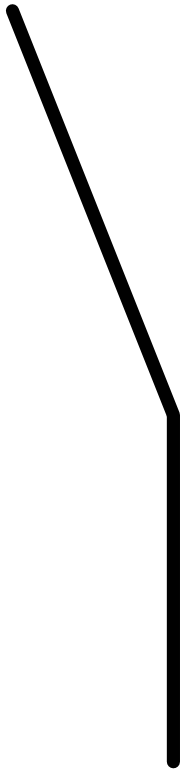
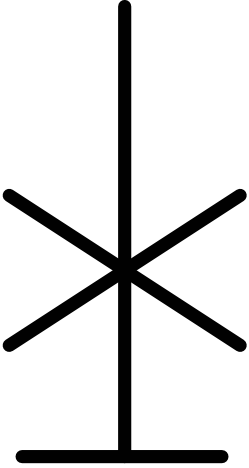
NHP MOD6+ Miniature Circuit Breaker MCB 6kA 1 Pole 25A C Curve



## ENVIRONMENT

Rated surrounding temperature without derating	30 °C
Rated temperature	-25...70 °C

## CIRCUIT DIAGRAM



1P

# MD6M125

NHP MOD6+ Miniature Circuit Breaker MCB 6kA 1 Pole 25A C Curve



## DIMENSIONAL DIAGRAM

