

# PRODUCT DATASHEET

## HQI-E 150 W/WDL CO

POWERSTAR HQI-E coated | Metal halide lamps for open and enclosed luminaires



---

### AREAS OF APPLICATION

- Shopping arcades
- Conference rooms, auditoriums, libraries
- Factories and workshops
- Exhibition halls and trade fairs
- Rail stations, overground and underground
- Pedestrian zones, public squares
- Outdoor applications only in suitable luminaires

---

### PRODUCT BENEFITS

- E27 or E40 screw base for simple lamp handling
- Different light colors

---

### BENEFITS OF OSRAM UV FILTER TECHNOLOGY

- Reduced material stress within the luminaire
- The UV filter on the lamp complies with the requirements of IEC 61167



**TECHNICAL DATA**

Electrical data

Nominal wattage	150.00 W
Rated wattage	150.00 W
Lamp current	1.8 A
PFC capacitor at 50 Hz	20 µF <sup>1)</sup>
Ignition voltage	3.6 / 5.0 kVp <sup>2)</sup>

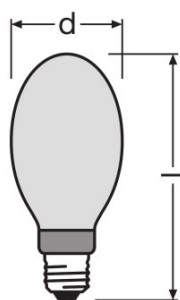
<sup>1)</sup> At rated voltage and  $\cos \phi \geq 0.9$

<sup>2)</sup> Minimum / Maximum

Photometrical data

Rated lamp efficacy (standard condition)	73 lm/W
Rated luminous flux	11600 lm
Color rendering index Ra	75
Color temperature	2900 K
Light color	729
Rated LLMF at 2,000 h	0.76
Rated LLMF at 4,000 h	0.66
Rated LLMF at 6,000 h	0.48
Rated LLMF at 8,000 h	0.41
UV protection	Yes
Light color (designation)	Warm White DE LUXE
Luminous flux	11600 lm

Dimensions & weight



E27  
IEC 7004-21

Diameter	55.0 mm
Length	141.0 mm
Product weight	79.43 g

Temperatures & operating conditions

Maximum permitted outer bulb temperature	400 °C
Maximum permitted base edge temperature	210 °C

### Lifespan

Rated lamp survival factor at 2,000 h	0.99
Rated lamp survival factor at 4,000 h	0.99
Rated lamp survival factor at 6,000 h	0.91
Rated lamp survival factor at 8,000 h	0.85
Lifespan B50	10000 h

### Additional product data

Base (standard designation)	E27
Design / version	Coated
Mercury content	16.3 mg

### Capabilities

Dimmable	No
Burning position	Any
Enclosed luminaire required	No

### Certificates & standards

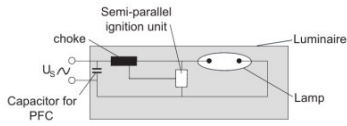
Energy efficiency class	A
Energy efficiency class	A
Energy consumption	165 kWh/1000h

### Country-specific categorizations

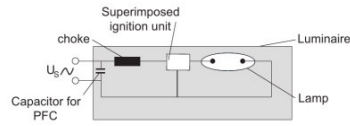
ILCOS	MES/UB-150/730-H/E/SL-E27-56/141
-------	----------------------------------

### SAFETY ADVICE

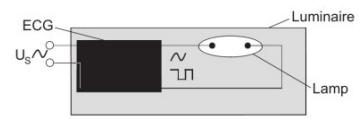
NAV 100 W chokes and HQI 150 W igniters are suitable for operating HQI-E 100 W lamps.



Circuit diagram



Circuit diagram



Circuit diagram

**LOGISTICAL DATA**

Product code	Product description	Packaging unit (Pieces/Unit)	Dimensions (length x width x height)	Volume	Gross weight
4050300433998	HQI-E 150 W/WDL CO	Shipping carton box 20	355 mm x 186 mm x 294 mm	19.41 dm <sup>3</sup>	2542.00 g

The mentioned product code describes the smallest quantity unit which can be ordered. One shipping unit can contain one or more single products. When placing an order, for the quantity please enter single or multiples of a shipping unit.

**DISCLAIMER**

Subject to change without notice. Errors and omission excepted. Always make sure to use the most recent release.