



# CoreLine Waterproof

## WT120C LED60S/840 IA1 L1500

Coreline Waterproof - - - 840 neutral white - Power supply unit regulating

Whether for a new building or renovation of an existing space, customers want lighting solutions that provide quality of light and substantial energy and maintenance savings. The new CoreLine Waterproof range of LED products can be used to replace traditional waterproof luminaires with fluorescent lamps. The process of selecting, installing and maintaining is so easy – it’s a simple switch. Also available as an Interact Ready wireless CoreLine waterproof luminaire that works with Interact Pro lighting software and Interact Ready devices to provide a connected lighting system for SMEs

### Product data

General Information	
Lamp family code	-
Beam angle of light source	120 °
Light source colour	840 neutral white
Light source replaceable	No
Number of gear units	1 unit
Driver/power unit/transformer	PSR [ Power supply unit regulating]
Driver included	Yes
Optic type	No [ -]
Luminaire light beam spread	110°
Connection	Push-in connector 3-pole
Cable	-
Protection class IEC	Safety class I
Glow-wire test	Temperature 850 °C, duration 30 s

Flammability mark	D [ For mounting on easily flammable surfaces]
CE mark	CE mark
ENEC mark	ENEC mark
Warranty period	5 years
Remarks	*-Per Lighting Europe guidance paper “Evaluating performance of LED based luminaires - January 2018”: statistically there is no relevant difference in lumen maintenance between B50 and for example B10. Therefore the median useful life (B50) value also represents the B10 value.
Constant light output	No
Number of products on MCB	22
RoHS mark	RoHS mark
Product Family Code	WT120C [ Coreline Waterproof]

# CoreLine Waterproof

Unified glare rating CEN	25
--------------------------	----

## Operating and Electrical

Input voltage	220 to 240 V
Input frequency	50 to 60 Hz
Inrush current	21 A
Inrush time	0.28 ms
Power factor (min.)	0.9

## Mechanical and Housing

Housing material	Polycarbonate
Reflector material	Steel
Optic material	-
Optical cover/lens material	Polycarbonate
Fixation material	Stainless steel
Optical cover/lens finish	Textured
Overall length	1530 mm
Overall width	87 mm
Overall height	96 mm
Colour	Grey

## Approval and Application

Ingress protection code	IP65 [ Dust penetration-protected, jet-proof]
Mech. impact protection code	IK08 [ 5 J vandal-protected]

## Initial Performance (IEC Compliant)

Initial luminous flux	6000 lm
Luminous flux tolerance	+/-10%
Initial LED luminaire efficacy	121 lm/W

Init. Corr. colour temperature	4000 K
Init. colour rendering index	≥80
Initial chromaticity	(0.38, 0.38) SDCM <3
Initial input power	49.5 W
Power consumption tolerance	+/-10%

## Over Time Performance (IEC Compliant)

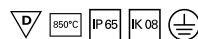
Control gear failure rate at median useful life 50000 h	5 %
Lumen maintenance at median useful life* 50000 h	L75

## Application Conditions

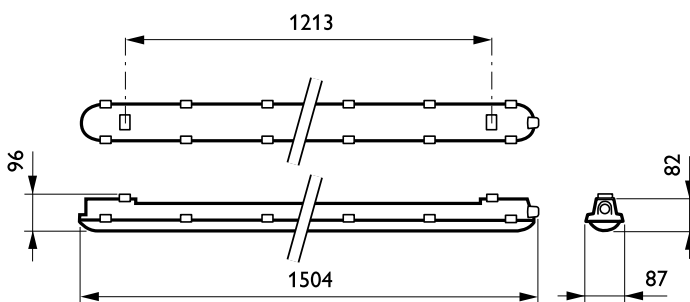
Ambient temperature range	-20 to +35 °C
Performance ambient temperature Tq	25 °C

## Product Data

Full product code	871869939714200
Order product name	WT120C LED60S/840 IA1 L1500
EAN/UPC – product	8718699397142
Order code	39714200
Numerator – quantity per pack	1
Numerator – packs per outer box	1
Material no. (12NC)	910500465267
Net weight (piece)	1.820 kg



## Dimensional drawing



CoreLine Waterproof WT120C

