



CorePro LED tube Universal T8



CorePro LEDtube UN 1500mm HO 23W840 T8

The new Philips CorePro LEDtube Universal T8 brings simplicity to your lighting project. You can forget about the driver technology. Thanks to a unique design, the Philips CorePro LEDtube Universal T8 directly fits into luminaires operating either on Electro Magnetic ballasts, HF Electronic ballasts or mains power connections. So simple to operate and no need to carry double stock of products! Perfectly safe, reliable and easy to install, the Philips CorePro LEDtube Universal T8 is the ideal alternative to standard fluorescent tubes to save energy and reduce investment.

Product data

General information	
Cap base	G13 [Medium Bi-Pin Fluorescent]
EU RoHS compliant	Yes
Nominal lifetime (nom.)	30000 h
Switching cycle	50000
	Sphere

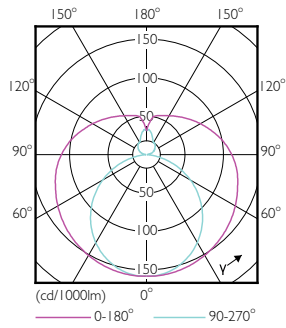
Light technical	
Colour Code	840 [CCT of 4,000 K]
Beam Angle (Nom)	240 °
Luminous flux (nom.)	2700 lm
Colour designation	Cool White (CW)
Correlated Colour Temperature (Nom)	4000 K
Luminous efficacy (rated) (nom.)	117 lm/W
Colour consistency	<6
Colour rendering index (nom.)	80
LLMF at end of nominal lifetime (nom.)	70 %

Operating and electrical	
Input frequency	50 to 60 Hz
Power (Rated) (Nom)	23 W
Lamp current (nom.)	130 mA
Starting time (nom.)	0.5 s
Warm-up time to 60% light (nom.)	0.5 s
Power factor (nom.)	0.9
Voltage (Nom)	220-240 V

Temperature	
T-ambient (max.)	45 °C
T-ambient (min.)	-20 °C
T-ambient (min.)	-20 °C
T storage (max.)	65 °C
T storage (min.)	-40 °C
T-Case maximum (nom.)	60 °C

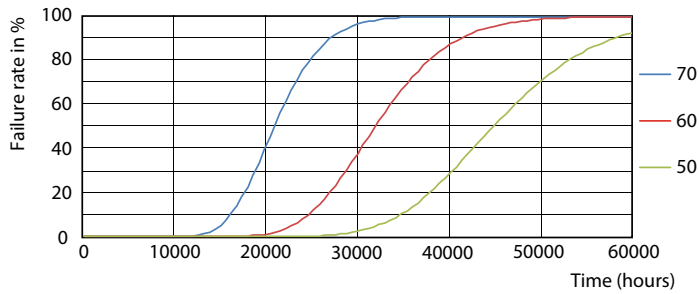
CorePro LED tube Universal T8

Photometric data

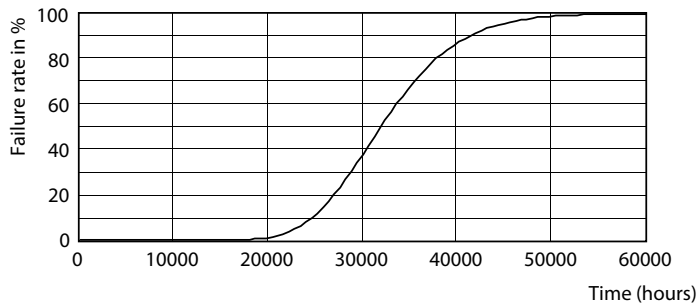


18W G13 830 3000K

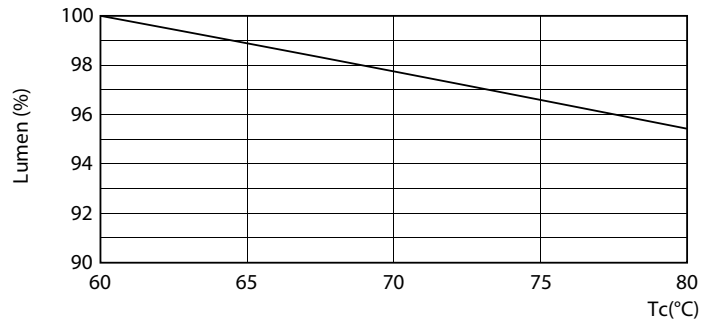
Lifetime



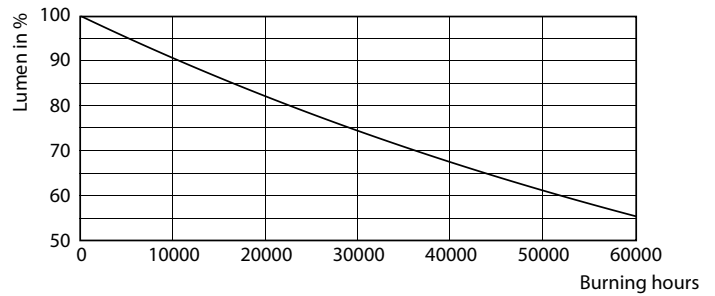
LEDtube COR SLR 23W 30K FailureRate-LED-LED



18W G13



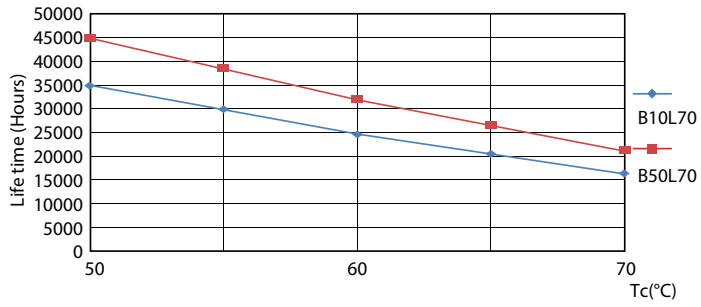
LEDtube COR SLR 23W 30K LumenVsTc-LMP-LMP



18W G13

CorePro LED tube Universal T8

Lifetime



LEDtube COR SLR 23W 30K LifetimeVsTc-LED-LED

