

# MASTER LEDtube Mains T5



## MASTER LEDtube 1500mm HO 26W 830 T5

The new Philips Master LEDtube Mains T5 brings simplicity to your lighting project. You don't need to pay attention to the driver technology anymore. Thanks to a unique design, Philips MASTER LEDtube Mains T5 installs in luminaires operating on mains power connection. So simple to operate! Perfectly safe, reliable & easy to install, the Philips MASTER LEDtube Mains T5 is the ideal alternative to standard fluorescent tubes to maximise value over lifetime with high energy savings and lower maintenance costs.

### Product data

General Information		Operating and Electrical	
Cap base	G5 [ G5]	Input frequency	50 to 60 Hz
EU RoHS compliant	Yes	Power (Rated) (Nom)	26 W
Nominal lifetime (nom.)	50000 h	Lamp current (nom.)	125 mA
Switching cycle	200,000X	Starting time (nom.)	0.5 s
	Sphere	Warm-up time to 60% light (nom.)	0.5 s
		Power factor (nom.)	0.92
		Voltage (Nom)	220-240 V
Light Technical		Temperature	
Colour Code	830 [ CCT of 3,000 K]	T-ambient (max.)	45 °C
Beam Angle (Nom)	200 °	T-ambient (min.)	-20 °C
Luminous flux (nom.)	3600 lm	T storage (max.)	65 °C
Colour designation	White (WH)	T storage (min.)	-40 °C
Correlated Colour Temperature (Nom)	3000 K	T-Case maximum (nom.)	70 °C
Luminous efficacy (rated) (nom.)	138.00 lm/W		
Colour consistency	<6		
Colour rendering index (nom.)	80		
LLMF at end of nominal lifetime (nom.)	70 %		

# MASTER LEDtube Mains T5

## Controls and Dimming

Dimmable	No
----------	----

## Mechanical and Housing

Lamp Finish	Frosted
Bulb material	Glass
Product length	1500 mm
Bulb shape	Tube, double-ended

## Approval and Application

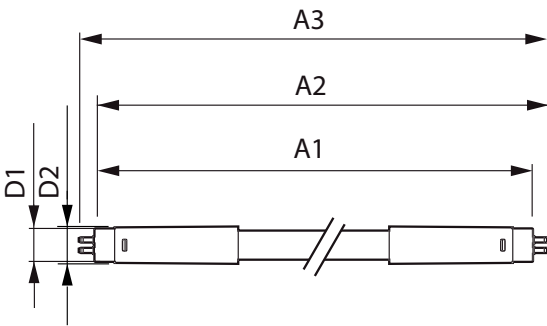
Energy Efficiency Class	D
Energy-saving product	Yes
Approval marks	RoHS compliance CE marking KEMA Keur certificate

Energy consumption kWh/1,000 hours	26 kWh
	652785

## Product Data

Full product code	871869681929600
Order product name	MASTER LEDtube 1500mm HO 26W 830 T5
EAN/UPC – product	8718696819296
Order code	81929600
SAP numerator – quantity per pack	1
Numerator – packs per outer box	10
SAP material	929001908802
SAP net weight (piece)	0.285 kg

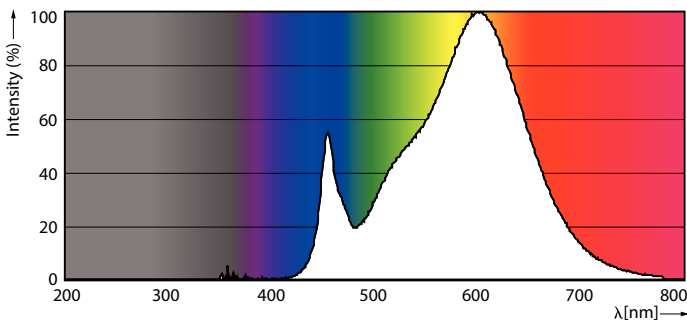
## Dimensional drawing



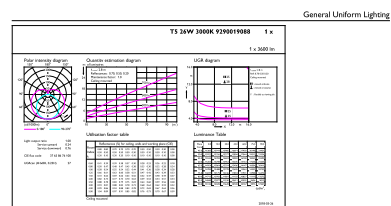
MASTER LEDtube 1500mm HO 26W 830 T5

Product	D1	D2	A1	A2	A3
MASTER LEDtube 1500mm HO 26W 830 T5	15 mm	16.9 mm	1449 mm	1456.1 mm	1463.2 mm

## Photometric data



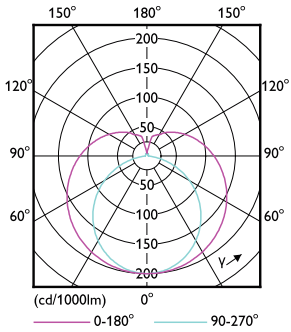
26W G5



26W G5 830 3000K

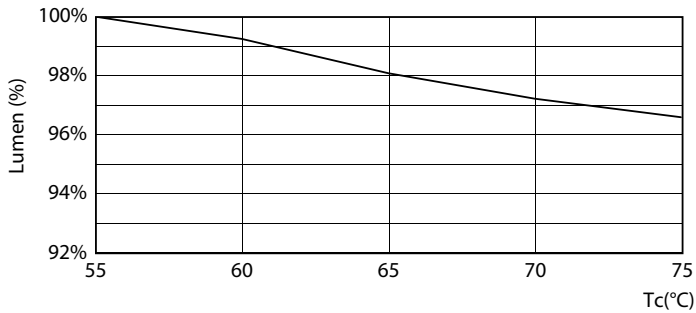
# MASTER LEDtube Mains T5

## Photometric data

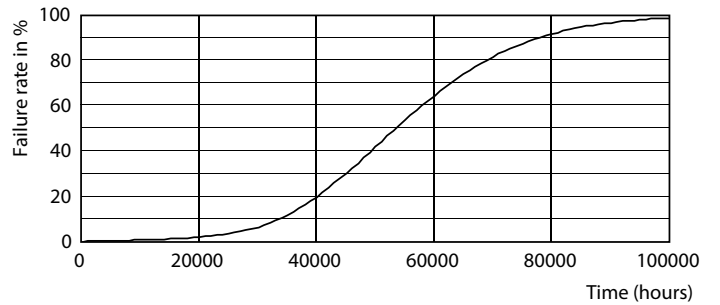


26W G5 830 3000K

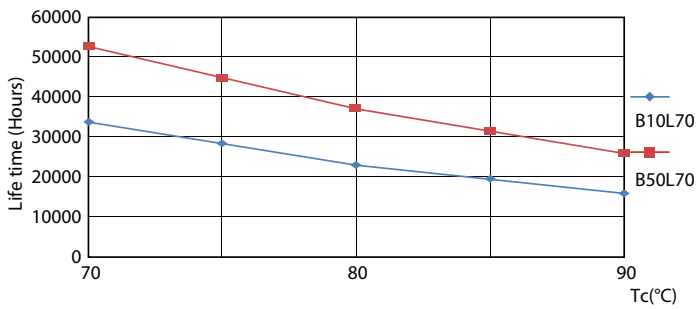
## Lifetime



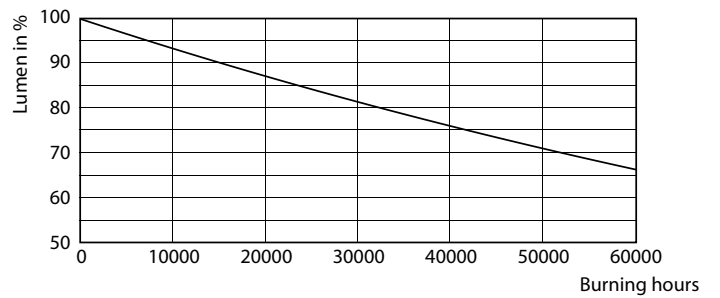
LEDtube MAS 1 26W 50K Lumen-VsTc-LMP



26W G5



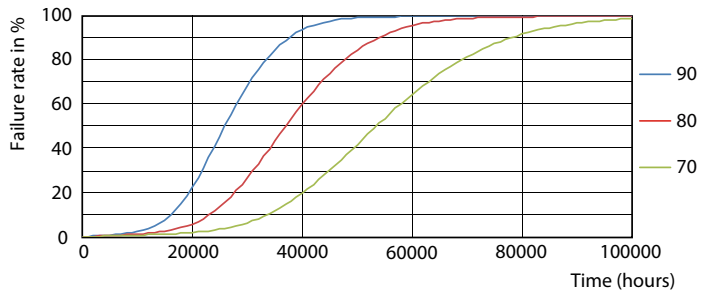
LEDtube MAS 1 26W 50K LifetimeVsTc-LED



26W G5

# MASTER LEDtube Mains T5

## Lifetime



LEDtube MAS 1 26W 50K FailureRate-LED

