



MASTER VALUE LEDspot MV

MASTERLEDspot VLE D 6.2-80W GU10 927 36D UK

Delivering a warm, halogen-like accent beam, the MASTER VALUE LEDspot MV is a perfect for spot-lighting. Thanks to its high CRI, it achieves more natural colours, enabling cosy and comfortable ambience for residential and hospitality situations, and emphasising the beauty of merchandise in retail. These LEDspots have the familiar look and feel of glass spots, keeping the classic beauty of glass spots and adding the strong performance of LED technology. The dimming function enables creation of the desired atmosphere, and it works with a broad selection of dimmers.

Warnings and Safety

- Operating temperature range is between -20° C and 45° C ambient
- Only to apply in dry or damp locations and most of open fixtures with lamp-holders that offer sufficient space (10 mm free air space)
- Not intended for use with emergency light fixtures or exit lights

Product data

General Information	
Cap base	GU10 [GU10]
EU RoHS compliant	Yes
Nominal lifetime (nom.)	25000 h
Switching cycle	50,000X
Light Technical	
Colour Code	927 [CCT of 2,700 K]
Beam Angle (Nom)	36°
Luminous flux (nom.)	575 lm

Luminous intensity (nom.)	850 cd
Colour designation	Warm white (WW)
Correlated Colour Temperature (Nom)	2700 K
Luminous efficacy (rated) (nom.)	92.00 lm/W
Colour consistency	<6
Colour rendering index (nom.)	90
LLMF at end of nominal lifetime (nom.)	70 %
Luminous flux in 90° cone (rated)	575 lm

MASTER VALUE LEDspot MV

Operating and Electrical

Input frequency	50 to 60 Hz
Power (Rated) (Nom)	6.2 W
Lamp current (nom.)	33 mA
Wattage equivalent	80 W
Starting time (nom.)	0.5 s
Warm-up time to 60% light (nom.)	0.5 s
Power factor (nom.)	0.88
Voltage (Nom)	220-240 V

Temperature

T-Case maximum (nom.)	80 °C
-----------------------	-------

Controls and Dimming

Dimmable	Yes
----------	-----

Mechanical and Housing

Bulb shape	PAR16 [PAR 2 inch]
------------	---------------------

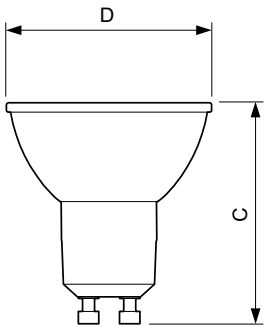
Approval and Application

Energy Efficiency Class	F
Suitable for accent lighting	Yes
Energy consumption kWh/1,000 hours	7 kWh
	391905

Product Data

Full product code	871869967541701
Order product name	MASTERLEDspot VLE D 6.2-80W GU10 927 36D UK
EAN/UPC – product	8718699675417
Order code	67541701
SAP numerator – quantity per pack	1
Numerator – packs per outer box	10
SAP material	929002059599
SAP net weight (piece)	0.038 kg

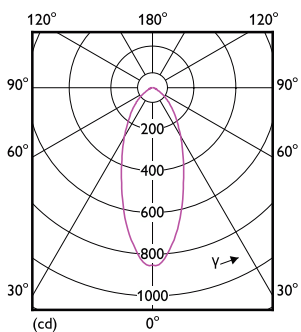
Dimensional drawing



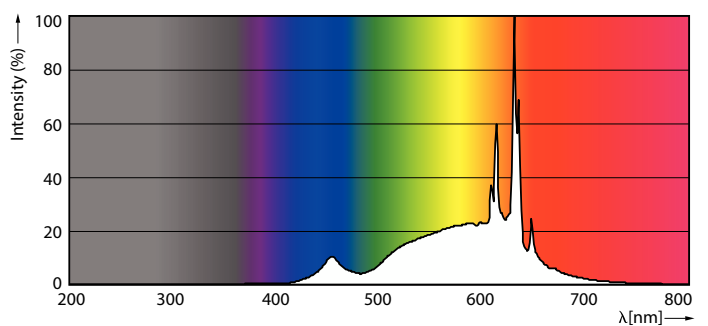
MASTERLEDspot VLE D 6.2-80W GU10 927 36D UK

Product	D	C
MASTERLEDspot VLE D 6.2-80W GU10 927 36D UK	50 mm	54 mm

Photometric data



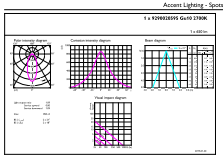
Light Distribution Diagram



Spectral Power Distribution Colour

MASTER VALUE LEDspot MV

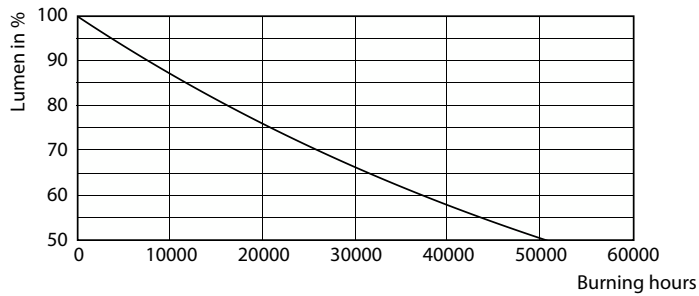
Photometric data



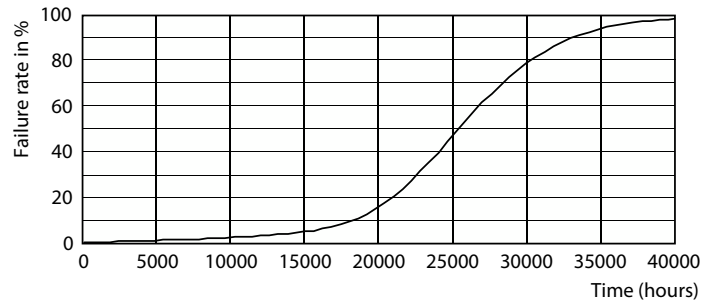
© 2021 Philips Lighting B.V. All rights reserved. Philips Lighting B.V. Page 1/1

Accent Lighting Spots

Lifetime



25K LMP



25K LED

