



# CorePro LED PLT 4P



## CorePro LED PLT HF 6.5W 830 4P GX24q-2

The CorePro LED PLT 4P integrates a LED light source into a traditional fluorescent form factor. This product is the ideal solution for uplampping in general lighting applications: it meets basic lighting requirements, offers significant energy savings, and is environmentally friendly

### Product data

General Information		Input Frequency	
Cap-Base	GX24Q-2 [GX24q-2]	Power Consumption	20K-80K Hz
Nominal lifetime	30,000 hour(s)	Lamp Current (Max)	6.5 W
Switching Cycle	200,000	Lamp Current (Min)	300 mA
Lighting Technology	LED	Starting Time (Nom)	150 mA
Flux measurement reference	Sphere	Warm-up time to 60% light	0.5 s
CE mark	Yes	Power Factor (Fraction)	0.9
EU RoHS compliant	Yes	Voltage (Nom)	20-60 V
		LED alternative to fluorescent lamp power	18 W
Light Technical		Temperature	
Color Code	830 [CCT of 3000K]	Ambient temperature range	-20 °C to 35 °C
Beam Angle (Nom)	120 degree(s)	T-Case Maximum (Nom)	65 °C
Luminous Flux	720 lumen		
Color Designation	White (WH)	Controls and Dimming	
Correlated Color Temperature (Nom)	3000 K	Dimmable	No
Luminous Efficacy (rated) (Nom)	110 lm/W		
Color Consistency	<6	Mechanical and Housing	
Color rendering index (CRI)	82	Bulb Finish	Frosted
LLMF At End Of Nominal Lifetime (Nom)	70 %	Bulb Material	Plastic
Photobiological safety according to EN 62471	RG1	Product Length	100 mm
		Bulb Shape	PL-T
Operating and Electrical			
Line Frequency	20K-80K Hz		

# CorePro LED PLT 4P

## Approval and Application

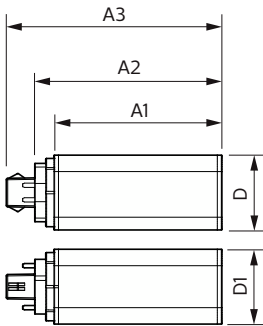
Energy Efficiency Class	F
Energy Saving Product	Yes
Approval Marks	RoHS compliance TUV CE marking KEMA Keur certificate
Energy Consumption kWh/1000 h	7 kWh
EPREL Registration Number	1361420

## Product Data

Full product code	871951448776500
Order product name	CorePro LED PLT HF 6.5W 830 4P GX24q-2

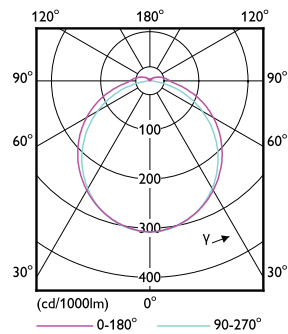
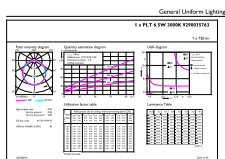
Order code	929003576302
Numerator - Quantity Per Pack	1
Numerator - Packs per outer box	20
Material Nr. (12NC)	929003576302
Full product name	CorePro LED PLT HF 6.5W 830 4P GX24q-2
EAN/UPC - Case	8719514487772
EAN/UPC - Product/Case	8719514487765

## Dimensional drawing



Product	D1	D2	A1	A2	A3
CorePro LED PLT HF 6.5W 830 4P GX24q-2	42 mm		93 mm	103 mm	119 mm

## Photometric data

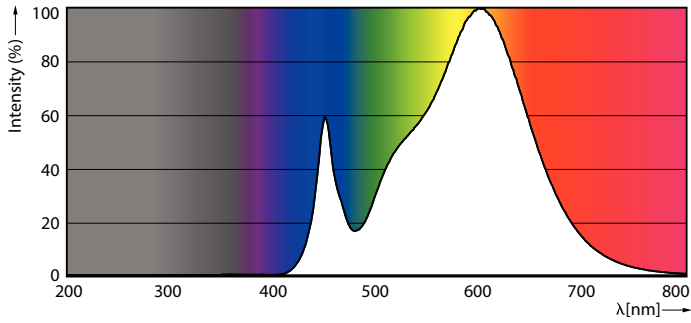


General uniform lighting - CorePro LED PLT HF 6.5W 830 4P GX24q-2

Light Distribution Diagram

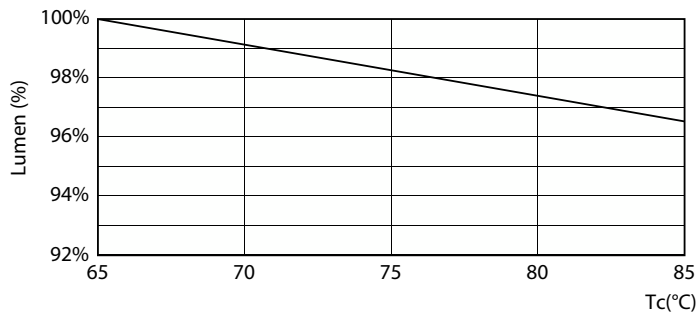
# CorePro LED PLT 4P

## Photometric data

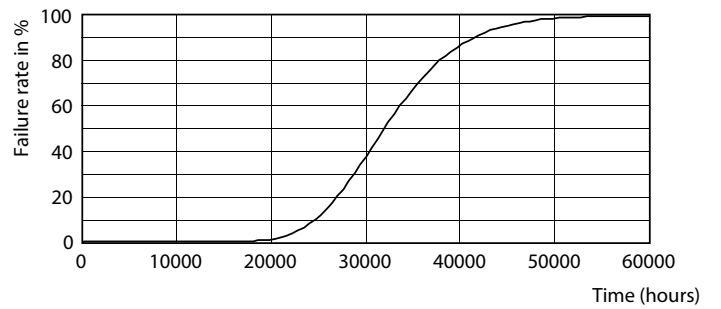


Spectral Power Distribution Colour

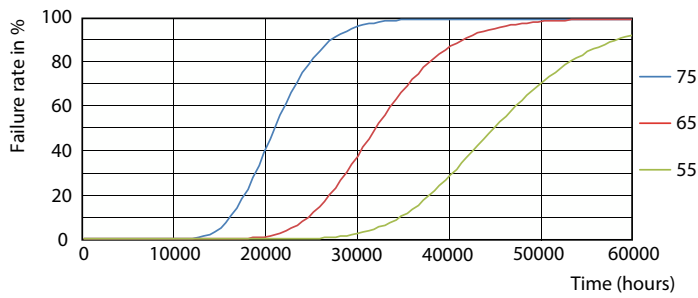
## Lifetime



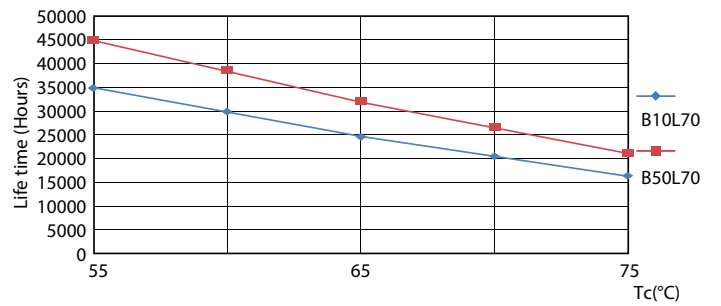
Lumen Maintenance Diagram



Life Expectancy Diagram - CorePro LED PLT HF 6.5W 830 4P GX24q-2



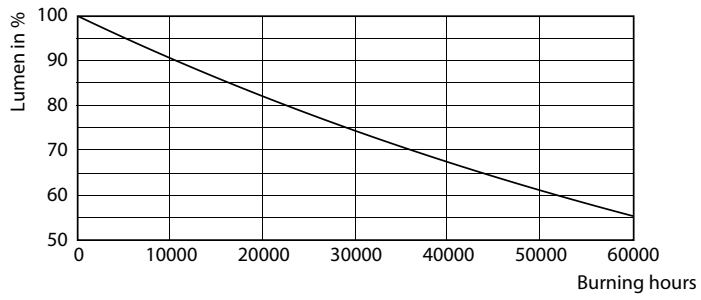
Life Expectancy Diagram - CorePro LED PLT HF 6.5W 830 4P GX24q-2



Life Expectancy Diagram - CorePro LED PLT HF 6.5W 830 4P GX24q-2

# CorePro LED PLT 4P

## Lifetime



Lumen Maintenance Diagram - CorePro LED PLT HF 6.5W 830 4P GX24q-2

