



CorePro LED PLT 4P



CorePro LED PLT HF 9W 840 4P GX24q-3

The CorePro LED PLT 4P integrates a LED light source into a traditional fluorescent form factor. This product is the ideal solution for uplampping in general lighting applications: it meets basic lighting requirements, offers significant energy savings, and is environmentally friendly.

Product data

General Information		Input frequency	
Cap base	GX24Q-3 [GX24q-3]		20 K–80 K Hz
Nominal lifetime	30,000 h	Power Consumption	9 W
Switching Cycle	200,000	Lamp current (max.)	400 mA
Lighting Technology	LED	Lamp current (min.)	250 mA
Flux measurement reference	Sphere	Starting time (nom.)	0.5 s
CE mark	Yes	Warm-up time to 60% light	0.5 s
EU RoHS compliant	Yes	Power Factor (Fraction)	0.9
		Voltage (nom.)	20–60 V
		LED alternative to fluorescent lamp power	26 W
Light Technical		Temperature	
Colour Code	840 [CCT of 4000K]	Ambient temperature range	-20°C to 35°C
Beam angle (nom.)	120 degree(s)	T-Case maximum (nom.)	65 °C
Luminous Flux	1,100 lm		
Colour designation	Cool White (CW)	Controls and Dimming	
Correlated Colour Temperature	4000 K	Dimmable	No
Luminous efficacy (rated) (nom.)	122 lm/W		
Colour consistency	<6	Mechanical and Housing	
Colour rendering index (CRI)	82	Lamp Finish	Frosted
LLMF at end of nominal lifetime (nom.)	70 %	Bulb material	Plastic
Photobiological safety according to EN 62471	RG1	Product length	100 mm
		Bulb shape	Tube, single-ended
Operating and Electrical			
Line Frequency	20K-80K Hz		

CorePro LED PLT 4P

Approval and Application

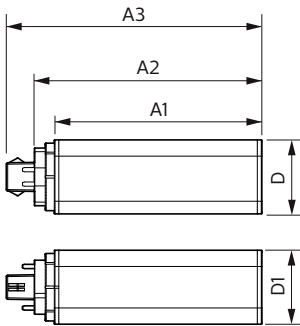
Energy Efficiency Class	E
Energy-saving product	Yes
Approval marks	RoHS compliance TUV CE marking KEMA Keur certificate
Energy consumption kWh/1,000 hours	9 kWh
EPREL registration number	1361423

Product Data

Full EOC	871951448782600
Order product name	CorePro LED PLT HF 9W 840 4P GX24q-3

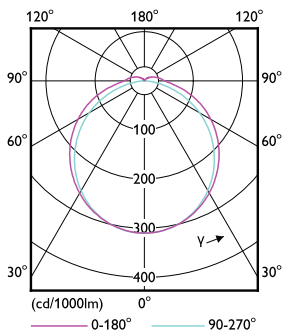
Order code	48782600
SAP numerator – quantity per pack	1
Numerator – packs per outer box	20
Material no. (12 NC)	929003576602
Full product name	CorePro LED PLT HF 9W 840 4P GX24q-3
EAN/UPC - Case	8719514487833
EAN/UPC – Product/Case	8719514487826

Dimensional drawing

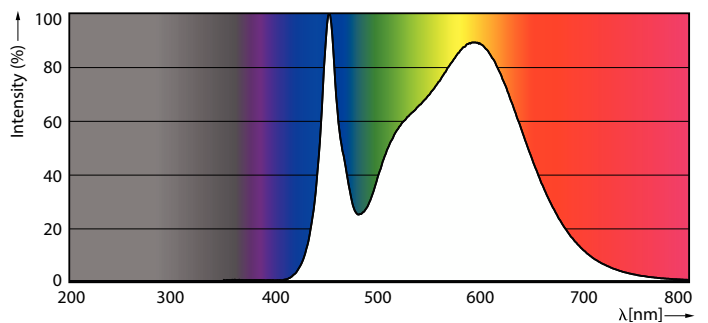


Product	D1	D2	A1	A2	A3
CorePro LED PLT HF 9W 840 4P GX24q-3	42 mm		115 mm	127 mm	142 mm

Photometric data



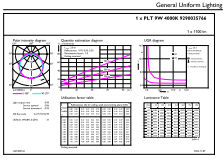
Light Distribution Diagram



Spectral Power Distribution Colour

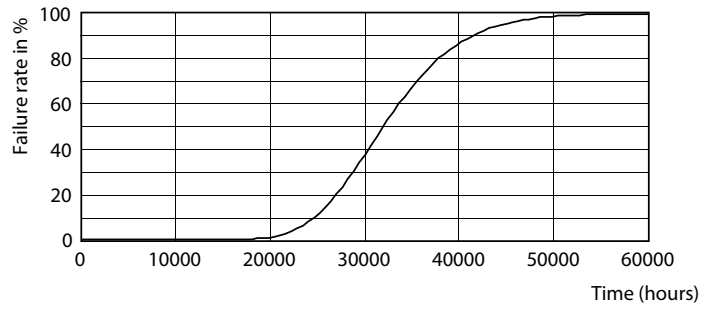
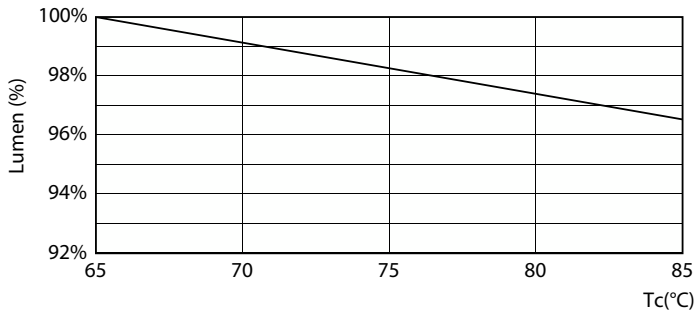
CorePro LED PLT 4P

Photometric data



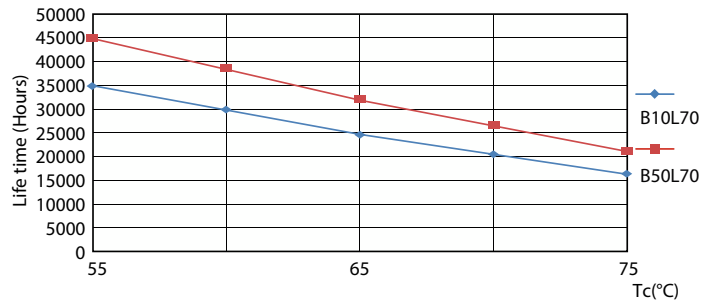
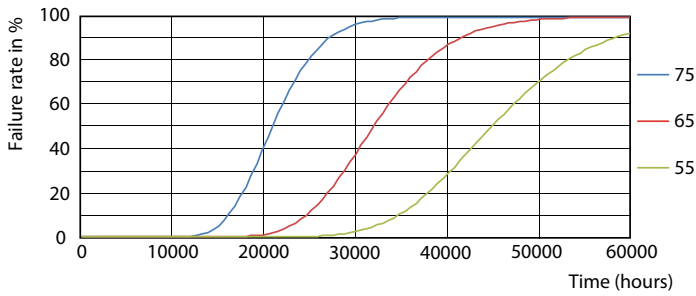
General uniform lighting - CorePro LED PLT HF 9W 840 4P GX24q-3

Lifetime



Lumen Maintenance Diagram

Life Expectancy Diagram - CorePro LED PLT HF 9W 840 4P GX24q-3

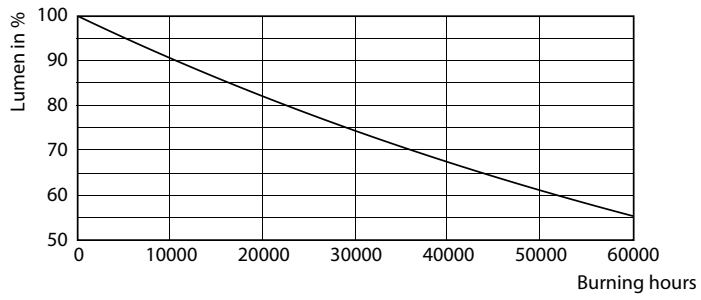


Life Expectancy Diagram - CorePro LED PLT HF 9W 840 4P GX24q-3

Life Expectancy Diagram - CorePro LED PLT HF 9W 840 4P GX24q-3

CorePro LED PLT 4P

Lifetime



Lumen Maintenance Diagram - CorePro LED PLT HF 9W 840 4P GX24q-3

