



# CorePro LED PLL



## CorePro LED PLL EM/Mains 8W 830 4P

Philips CorePro LED PLL is the ideal uplamping solution for downlights & luminaires in a wide range of general lighting applications. It integrates a LED light source into a traditional fluorescent form factor to offer superb energy savings over a lifetime that's twice as long as fluorescent alternatives.

### Product data

General Information	
Cap base	2G11 [2G11]
Nominal lifetime	30,000 h
Switching Cycle	200,000
Lighting Technology	LED
Flux measurement reference	Sphere
EU RoHS compliant	Yes
Light Technical	
Colour Code	830 [CCT of 3000K]
Beam angle (nom.)	160 degree(s)
Luminous Flux	960 lm
Colour designation	White (WH)
Correlated Colour Temperature	3000 K
Luminous efficacy (rated) (nom.)	120 lm/W
Colour consistency	<6
Colour rendering index (CRI)	80
LLMF at end of nominal lifetime (nom.)	70 %
Flickering value (PstLM)	1
Stroboscopic effect	0.4
Photobiological safety according to EN 62471	RG0

Operating and Electrical	
Line Frequency	50 to 60 Hz
Input frequency	50 to 60 Hz
Power Consumption	8 W
Lamp current (nom.)	42 mA
Starting time (nom.)	0.5 s
Warm-up time to 60% light	0.5 s
Power Factor (Fraction)	0.9
Voltage (nom.)	220-240 V
LED alternative to fluorescent lamp power	18 W
Temperature	
Ambient temperature range	-20°C to 45°C
T-Case maximum (nom.)	70 °C
Controls and Dimming	
Dimmable	No
Mechanical and Housing	
Lamp Finish	Frosted
Bulb material	Glass
Product length	200 mm

# CorePro LED PLL

## Approval and Application

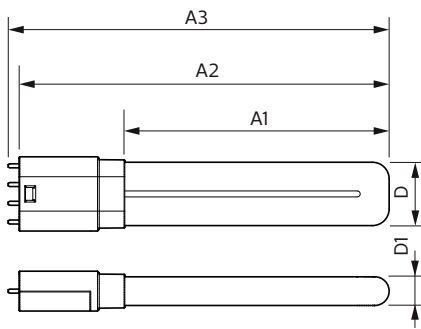
Energy Efficiency Class	E
Energy-saving product	Yes
Approval marks	RoHS compliance TUV CE marking KEMA Keur certificate
Energy consumption kWh/1,000 hours	8 kWh
EPREL registration number	1370823

## Product Data

Full EOC	872016915699900
----------	-----------------

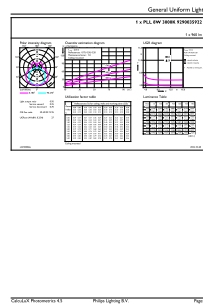
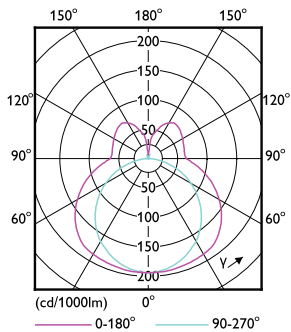
Order product name	CorePro LED PLL EM/Mains 8W 830 4P
Order code	15699900
SAP numerator – quantity per pack	1
Numerator – packs per outer box	10
Material no. (12 NC)	929003592202
Full product name	CorePro LED PLL EM/Mains 8W 830 4P
EAN/UPC – Case	8720169157002
EAN/UPC – Product/Case	8720169156999

## Dimensional drawing



Product	D1	D2	A1	A2	A3
CorePro LED PLL EM/Mains 8W 830 4P	17 mm		156 mm	218 mm	224 mm

## Photometric data

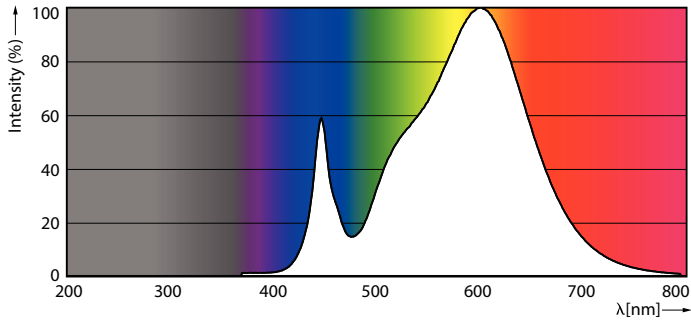


Light Distribution Diagram

General uniform lighting - CorePro LED PLL EM/Mains 8W 830 4P

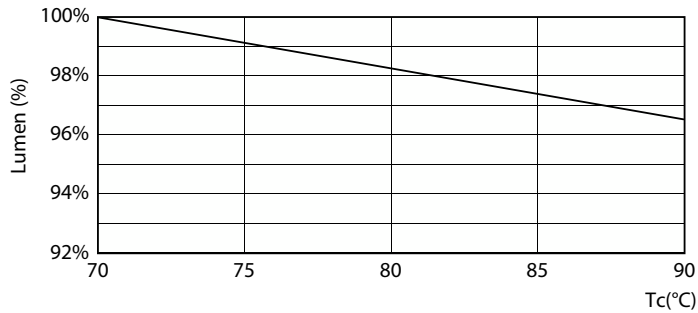
# CorePro LED PLL

## Photometric data

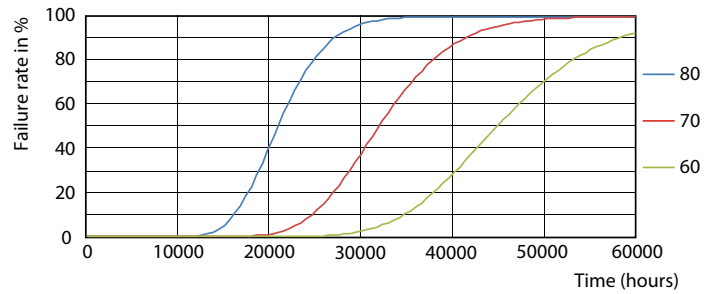


Spectral Power Distribution Colour

## Lifetime



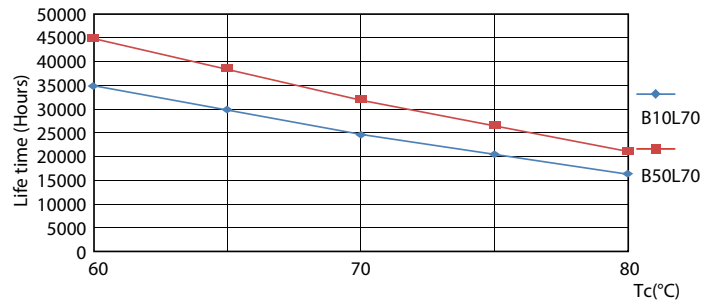
Lumen Maintenance Diagram



Life Expectancy Diagram - CorePro LED PLL EM/Mains 8W 830 4P



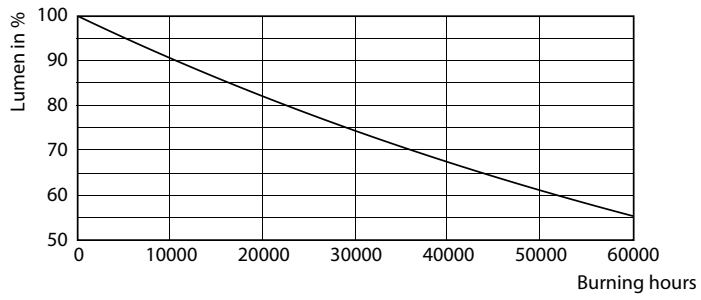
Life Expectancy Diagram - CorePro LED PLL EM/Mains 8W 830 4P



Life Expectancy Diagram - CorePro LED PLL EM/Mains 8W 830 4P

# CorePro LED PLL

## Lifetime



Lumen Maintenance Diagram - CorePro LED PLL EM/Mains 8W 830 4P

