

Blade Pro Exit Light

The Blade Pro Exit Sign is the perfect combination of style and safety, featuring longer-lasting Lithium Iron Phosphate battery. With its sleek and modern architectural design, it is aesthetically pleasing and stylish to the eye, making it a perfect fit for commercial offices, retail stores, museums, apartments, and other sites that require an exit sign. The Blade Pro Exit Sign is specifically designed with a dual output emergency driver for a combo operation of an EXIT sign and an emergency light. Ensuring the safety of occupants during an emergency and avoids a requirement of an additional emergency light.



- Stunning exit sign, crafted with a sleek and modern look to fit seamlessly into any commercial aesthetic
- All-in-one box includes pictograms, surface mount, wall mount, and recessed brackets.
- Unique Slide connect bracket included, ensuring a quick and easy installation process



IP20

Ingress
Protection
Rating



0 to 40

Operating
Temperature



60,000hrs
(L70/B50)

Lifetime



5 Years

Warranty

CODE	EFFICACY	DIMENSIONS	LUMINAIRE COLOUR	LINE CURRENT	CLASSIFICATION
BLADEPROBK	83.1lm/W	L405.20 x W55.20 x H243 mm	Black	0.03A	C0/C180: D32 C90/C360:D50
BLADEPROBKDA	74.4lm/W	L405.20 x W55.20 x H243 mm	Black	0.05A	C0/C180: D32 C90/C360:D50
BLADEPROWH	91.8lm/W	L405.20 x W55.20 x H243 mm	White	0.03A	C0/C180: D40 C90/C360:D63
BLADEPROWHDA	74.4lm/W	L405.20 x W55.20 x H243 mm	White	0.05A	C0/C180: D32 C90/C360:D63
BLADEPROWHDAIA	75.4lm/W	L405.20 x W55.20 x H243 mm	White	0.05A	C0/C180: D32 C90/C360:D63

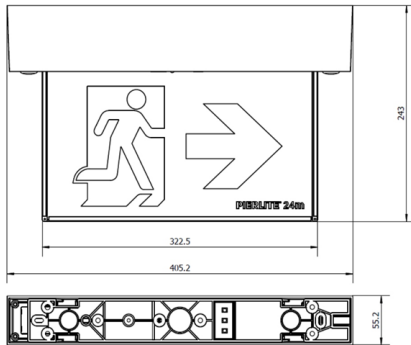
OPTION	BATTERY	BATTERY CHARGE	BATTERY CAPACITY
Maintained	LiFePO4	2hr	3200mA

ACCESSORY CODE	DESCRIPTION
BLADEPROBK TWH	Blade Pro cantilever and wall mount bracket white
BLADEPROSUSKITWH	Rod and Wire Mounted Kit (Rod and wire excluded)
DGLCEM3200/1L11	Battery LiFePO4 1 Cell 3.2V 3200mAh
DGLCEM3200/2L12	Battery LiFePO4 2Cell 6.4V 3200mAh (2HR)

AS/NZS 2293.1:2018 Classification Table

BLADEPROWH: C0/C180: D40; C90/C270: D63			
BLADEPROBK: C0/C180: D32; C90/C270: D50			
BLADEPROWHDA: C0/C180: D32; C90/C270: D63			
BLADEPROBKDA: C0/C180: D32; C90/C270: D50			
Allowable Luminaire Mounting Height (m)	Luminaire Maximum Spacing for each Plane (M)		
	C0	C90 / C270	C180
2.1	11.5	11.5	11.5
2.4	13.2	13.2	13.2
2.7	14.8	14.8	14.8
3	16.5	16.5	16.5

Line Drawings



Product Images



BLADEPROWH, BLADEPROWHDA



BLADEPROWH, BLADEPROWHDA



BLADEPROBK, BLADEPROBKDA



BLADEPROBK, BLADEPROBKDA



BLADEPROBK, BLADEPROBKDA



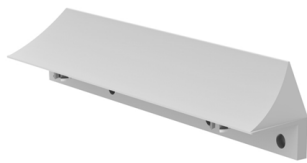
BLADEPROWH, BLADEPROWHDA



BLADEPROSUSKITWH



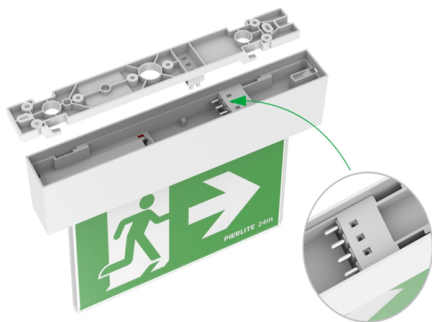
BLADEPROSUSKITWH



BLADEPROBKTHW



BLADEPROBK, BLADEPROBKDA



BLADEPROWH, BLADEPROWHDA