

Firefly 2 Emergency Light

The affordable and reliable LED emergency light with Lithium Iron Phosphate battery
One box solution with a fully integrated assembly

- Replaceable lithium iron phosphate (LiFePO4) battery
- Recessed mount available in white and black finish
- Easy installation, flex and plug included



80

CRI



IP20

Ingress Protection Rating



0 to 40

Operating Temperature



Non - Dimmable

Dimming



50,000hrs (L70/B50)

Lifetime



3 Years

Warranty

CODE	SYSTEM POWER	EXIT LUMEN	CCT	DIMENSIONS	LUMINAIRE COLOUR
FFRLED2	2.5W	174lm	6500K	L140 x W140 x H48.50 mm	White
FFRLEDBK2	2.5W	174lm	6500K	L140 x W140 x H48.50 mm	Black

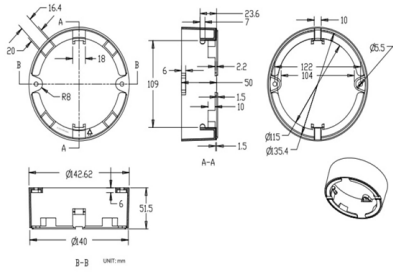
CLASSIFICATION	EMERGENCY MODE WATTAGE	EMERGENCY MODE LUMEN	OPTION	BATTERY	BATTERY CHARGE	BATTERY VOLTAGE	BATTERY CAPACITY	TESTING SYSTEM
C0/C180 :D32 C90/C270 : D32	2.5W	174lm	Non Maintained	LiFePO4	2hr	6.4V	1200mA	Manual

ACCESSORY CODE	DESCRIPTION
FFSLEDKITWH	SURFACE MOUNT KIT WHITE EXCLUDING FFRLED2
FFSLEDKITBK	SURFACE MOUNT KIT BLACK EXCLUDING FFRLEDBK2
BATPK1200/4L41	BATTERY PACK LIFEPO4 4CELL 6.4V 1200MAH (2P2S) SBS PCB+PLUG
FFSLEDKITWHWP	Firefly 2 IP65 Surface Mount KIT for FFRLED2

AS/NZS 2293.1:2018 Classification Table

ALLOWABLE LUMINAIRE MOUNTING HEIGHT (M)	LUMINAIRE MAXIMUM SPACING FOR EACH PLAN (M)		
	C0	C90/C270	C180
2.1	11.5	11.5	11.5
2.4	13.2	13.2	13.2
2.7	14.8	14.8	14.8
3	16.5	16.5	16.5
3.3	17.6	17.6	17.6
3.6	18	18	18
4	18.5	18.5	18.5
4.5	19	19	19
5	19.5	19.5	19.5
6	20.1	20.1	20.1

FFRLED2, FFRLEDBK2



Product Images

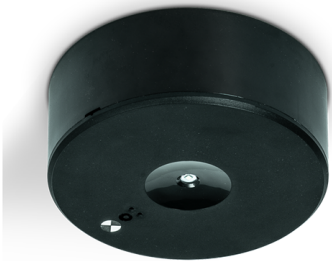


FFRLEDBK2



(Surface Mount Kit Sold Separately)

FFRLED2



(Surface Mount Kit Sold Separately)

FFRLEDBK2



FFSLEDKITWHWP

Accessories



FFSLEDKITWH



FFSLEDKITBK