

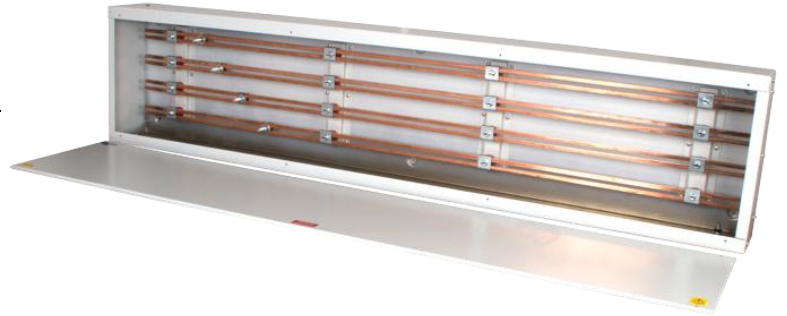
Product Code	Product Range	Issue No.	Issue Date	Issue By
100BC6	Busbar chambers	B	April 2026	T.T.

Description

4 pole horizontal busbar chamber.
Steel enclosure.

Features

High fault level.
Modern design to latest standards.
Robust, industrial style chamber for more cabling space.

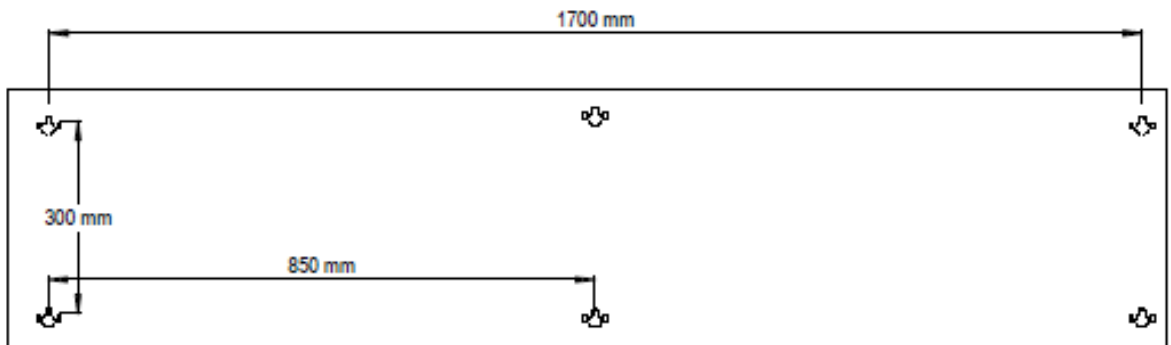
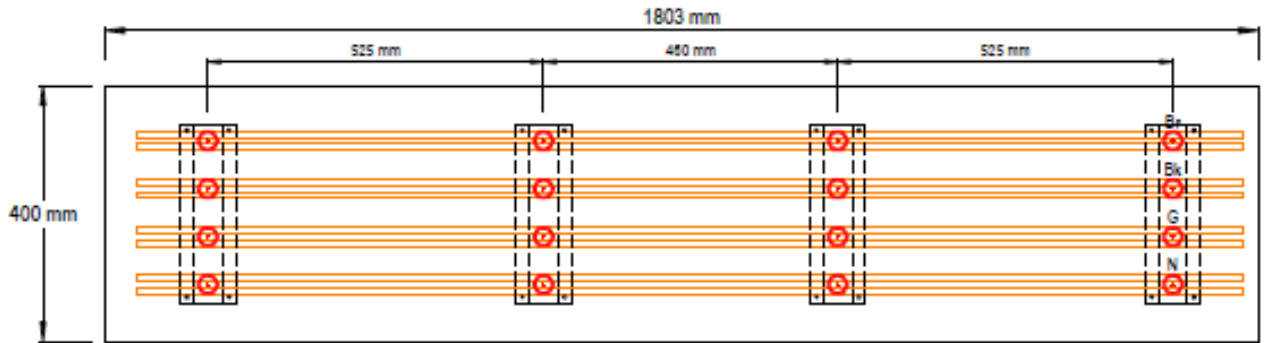


General Characteristics

Standards	BSEN61439-1.
Current Rating	100A
Voltage Rating	400V
Fault Current Rating	36kA Icc. Remote MCCB or BS88 fuse protection
Dielectric strength	2000V ac
IP Rating	3X
Pollution Degree	3
No. of Poles	4
Connection bolts	1x M8 bolt for each pole supplied
Terminal Torque – M8	20Nm (BLC8/23)
Insulation Voltage (Ui)	690V
Rated frequency	50 / 60Hz
Equipment Type	Fixed
Approx. Weight kg	24
Enclosure	1.6mm mild steel. Screw on end plates. Plain top, bottom and sides. Drill to suit site requirements. Bolt on front cover, Pozi screw.
Finish	RAL 7035. Powder coated, electrostatically applied.
Ambient operating temperature	-5 to 40 °C. Not exceeding average of 35 °C in any 24 hour period.
Maximum altitude	2000m
EMC environment	Type A

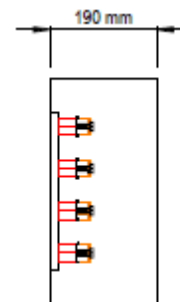
Product Code	Product Range	Issue No.	Issue Date	Issue By
100BC6	Range	B	April 2026	T.T.

Dimensions.



4 x Connection bolts supplied

BLC8/23.
Connection bolt – Place copper washer against busbar face. Place lug on top of copper washer.



Additional information

Usage	Intended for use by skilled persons or instructed persons.
Electrical	EMC environment: Environment type A.
Installation	Service conditions: Wiring of this product must comply with current IEE regulations. Units are intended for indoor use, dry conditions and NOT where high levels of humidity and temperature are experienced.