

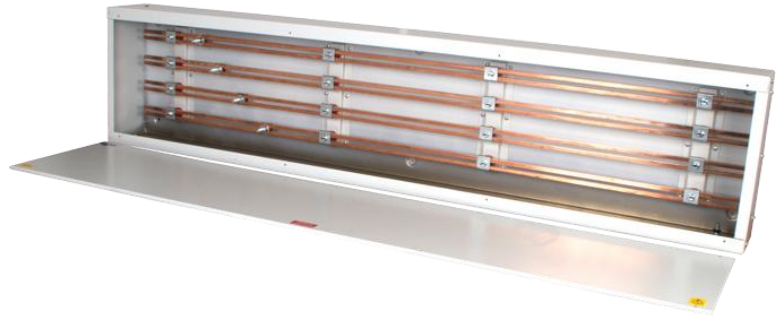
| | | | | |
|---------------|-----------------|-----------|------------|----------|
| Product Code | Product Range | Issue No. | Issue Date | Issue By |
| 300BC6 | Busbar chambers | B | April 2026 | T.T. |

Description

4 pole horizontal busbar chamber.
Steel enclosure.

Features

High fault level.
Modern design to latest standards.
Robust, industrial style chamber for more cabling space.

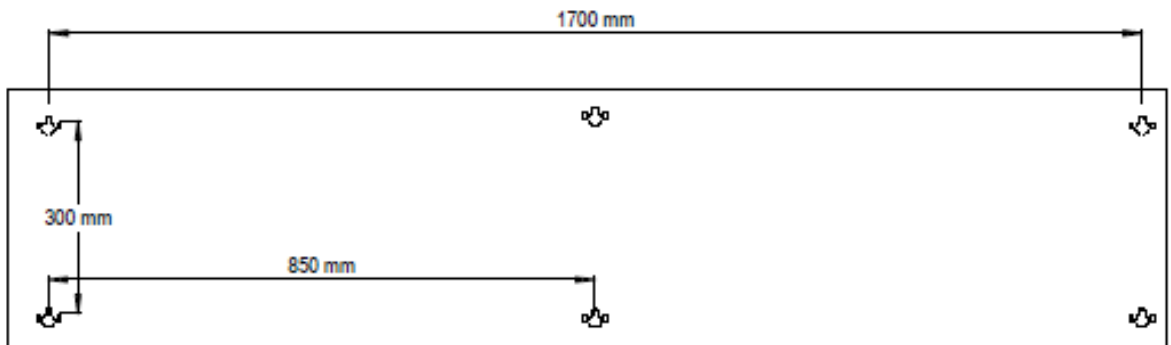
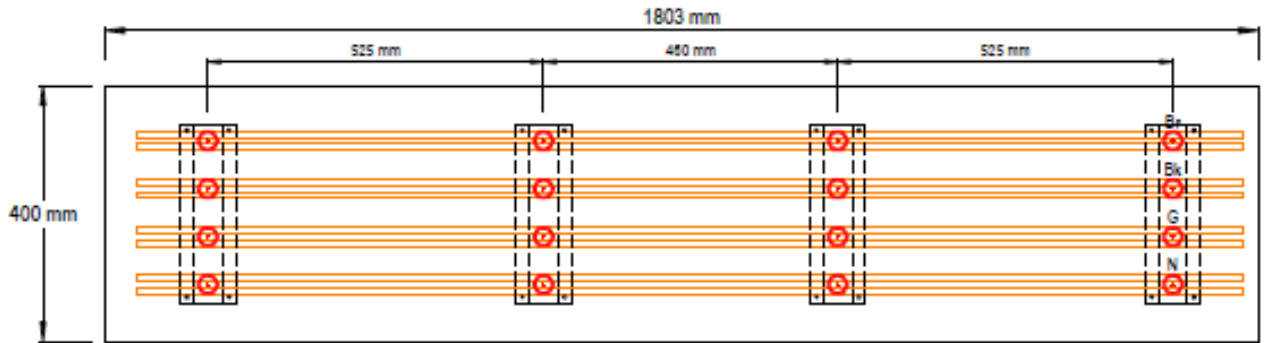


General Characteristics

| | |
|-------------------------------|---|
| Standards | BSEN61439-1. |
| Current Rating | 315A |
| Voltage Rating | 400V |
| Fault Current Rating | 36kA Icc. Remote MCCB or BS88 fuse protection |
| Dielectric strength | 2000V ac |
| IP Rating | 3X |
| Pollution Degree | 3 |
| No. of Poles | 4 |
| Connection bolts | 1 bolt for each pole supplied |
| Terminal Torque – M10 | 40Nm (BLC10/48) |
| Insulation Voltage (Ui) | 690V |
| Rated frequency | 50 / 60Hz |
| Equipment Type | Fixed |
| Approx. Weight kg | 43 |
| Enclosure | 1.6mm mild steel. Screw on end plates. Plain top, bottom and sides. Drill to suit site requirements. Bolt on front cover, Pozi screw. |
| Finish | RAL 7035. Powder coated, electrostatically applied. |
| Ambient operating temperature | -5 to 40 °C. Not exceeding average of 35 °C in any 24 hour period. |
| Maximum altitude | 2000m |
| EMC environment | Type A |

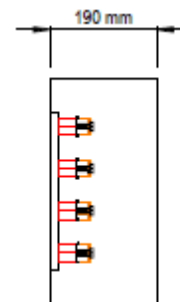
| | | | | |
|--------------|---------------|-----------|------------|----------|
| Product Code | Product Range | Issue No. | Issue Date | Issue By |
| 300BC6 | Range | B | April 2026 | T.T. |

Dimensions.



4 x Connection bolts supplied

BLC10 / 48.
 Connection bolt – Place cable lug against busbar face. Place washers on top of lug. Steel clamp is placed on rear of busbars with lip over busbars.



Additional information

| | |
|--------------|--|
| Usage | Intended for use by skilled persons or instructed persons. |
| Electrical | EMC environment: Environment type A. |
| Installation | Service conditions: Wiring of this product must comply with current IEE regulations. Units are intended for indoor use, dry conditions and NOT where high levels of humidity and temperature are experienced. |